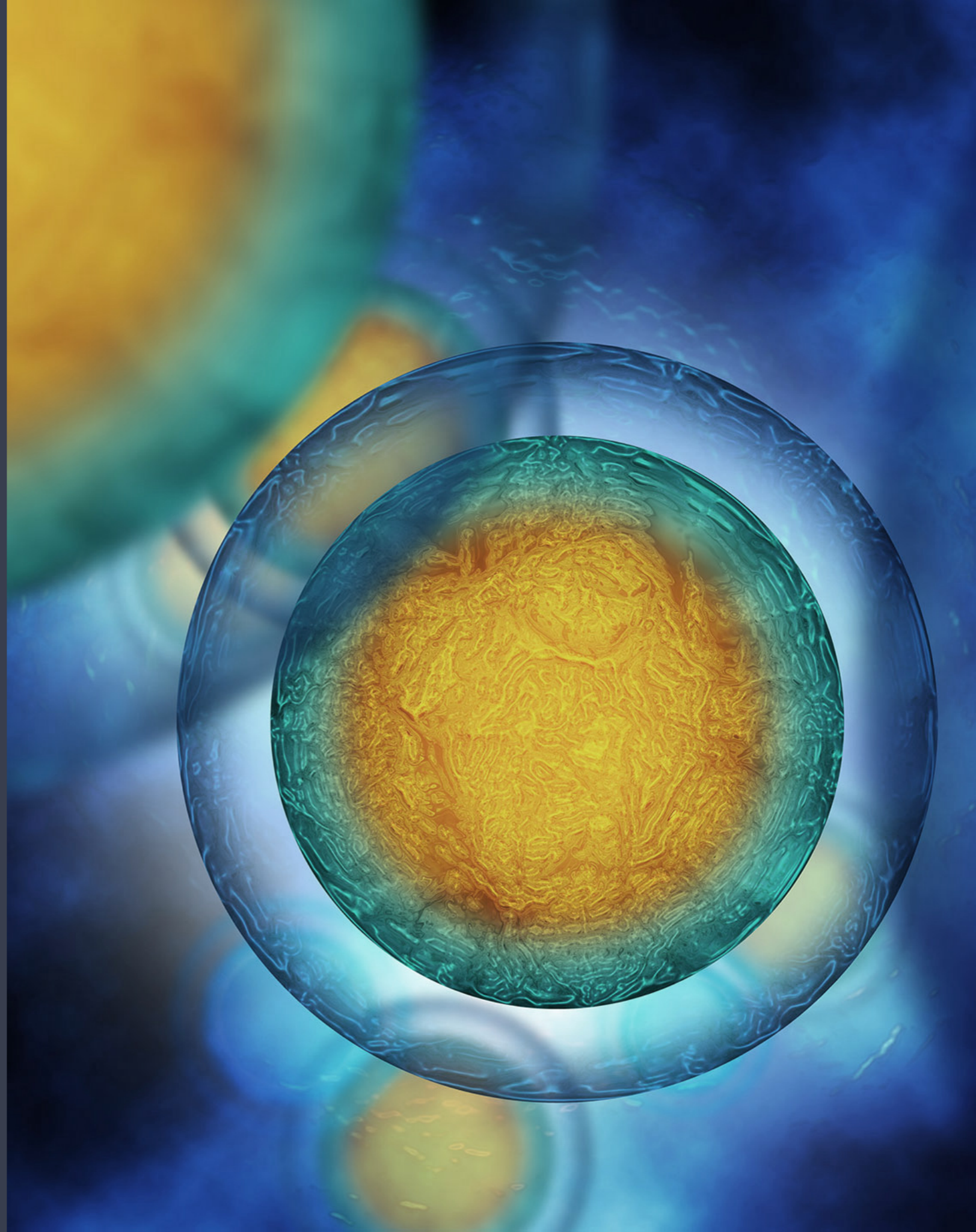


Surge Overflow

THE ART OF BEING READY

Creating flexibility
of infrastructure
to address patient
surge



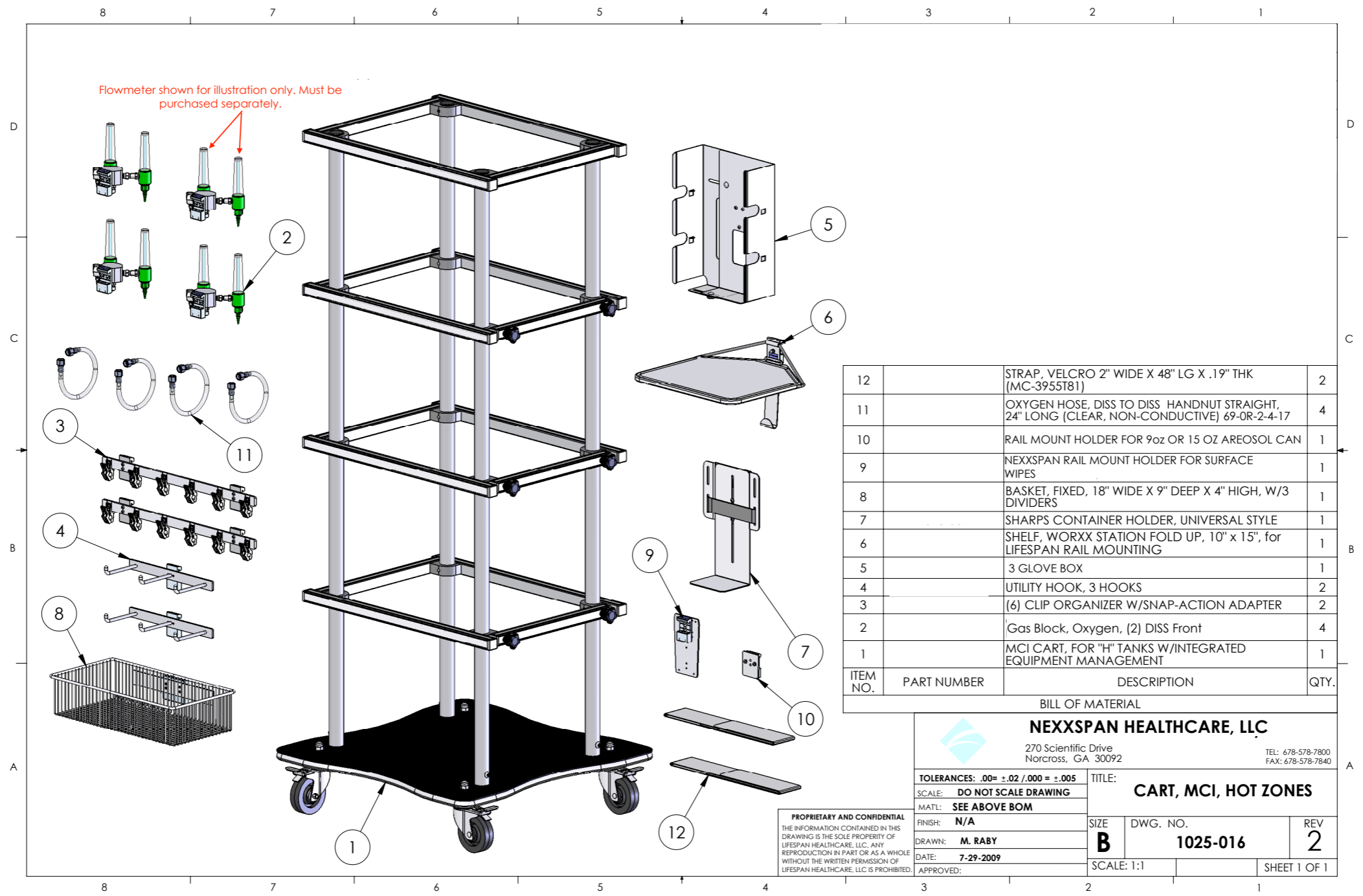
Mobile Patient Headwalls

ADDING BEDS

- Utilize non-traditional spaces such as conference rooms, waiting areas, lobbies, offices or even off-site tents or gymnasiums
- Create flexible patient care stations during medical population surges
- Take the essential tools necessary for proper, individualized care
- Ability to deploy gas expansion and easily move Heavy H tanks
- Adjust equipment & supplies based on patient needs







ITEM NO.	PART NUMBER	DESCRIPTION	QTY.
12		STRAP, VELCRO 2" WIDE X 48" LG X .19" THK (MC-3955T81)	2
11		OXYGEN HOSE, DISS TO DISS HANDNUT STRAIGHT, 24" LONG (CLEAR, NON-CONDUCTIVE) 69-0R-2-4-17	4
10		RAIL MOUNT HOLDER FOR 9oz OR 15 OZ AREOSOL CAN	1
9		NEXXSPAN RAIL MOUNT HOLDER FOR SURFACE WIPES	1
8		BASKET, FIXED, 18" WIDE X 9" DEEP X 4" HIGH, W/3 DIVIDERS	1
7		SHARPS CONTAINER HOLDER, UNIVERSAL STYLE	1
6		SHELF, WORXX STATION FOLD UP, 10" x 15", for LIFESPAN RAIL MOUNTING	1
5		3 GLOVE BOX	1
4		UTILITY HOOK, 3 HOOKS	2
3		(6) CLIP ORGANIZER W/SNAP-ACTION ADAPTER	2
2		Gas Block, Oxygen, (2) DISS Front	4
1		MCI CART, FOR "H" TANKS W/INTEGRATED EQUIPMENT MANAGEMENT	1

BILL OF MATERIAL
NEXXSPAN HEALTHCARE, LLC

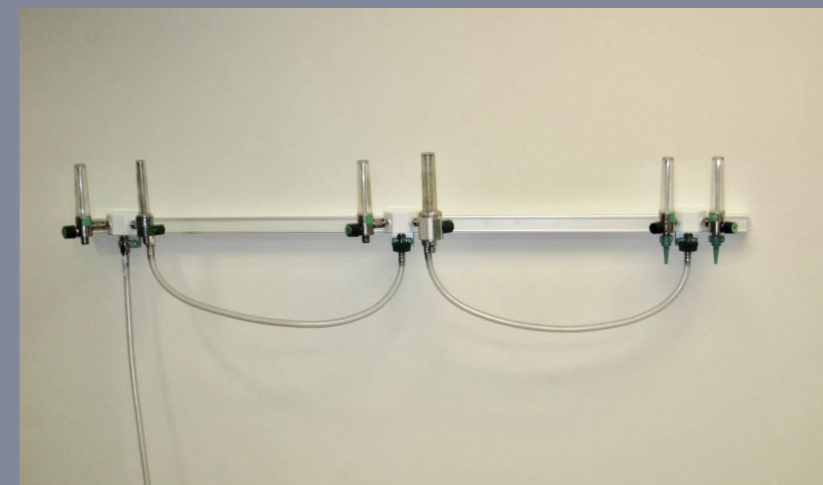
270 Scientific Drive
 Norcross, GA 30092
 TEL: 678-578-7800
 FAX: 678-578-7840

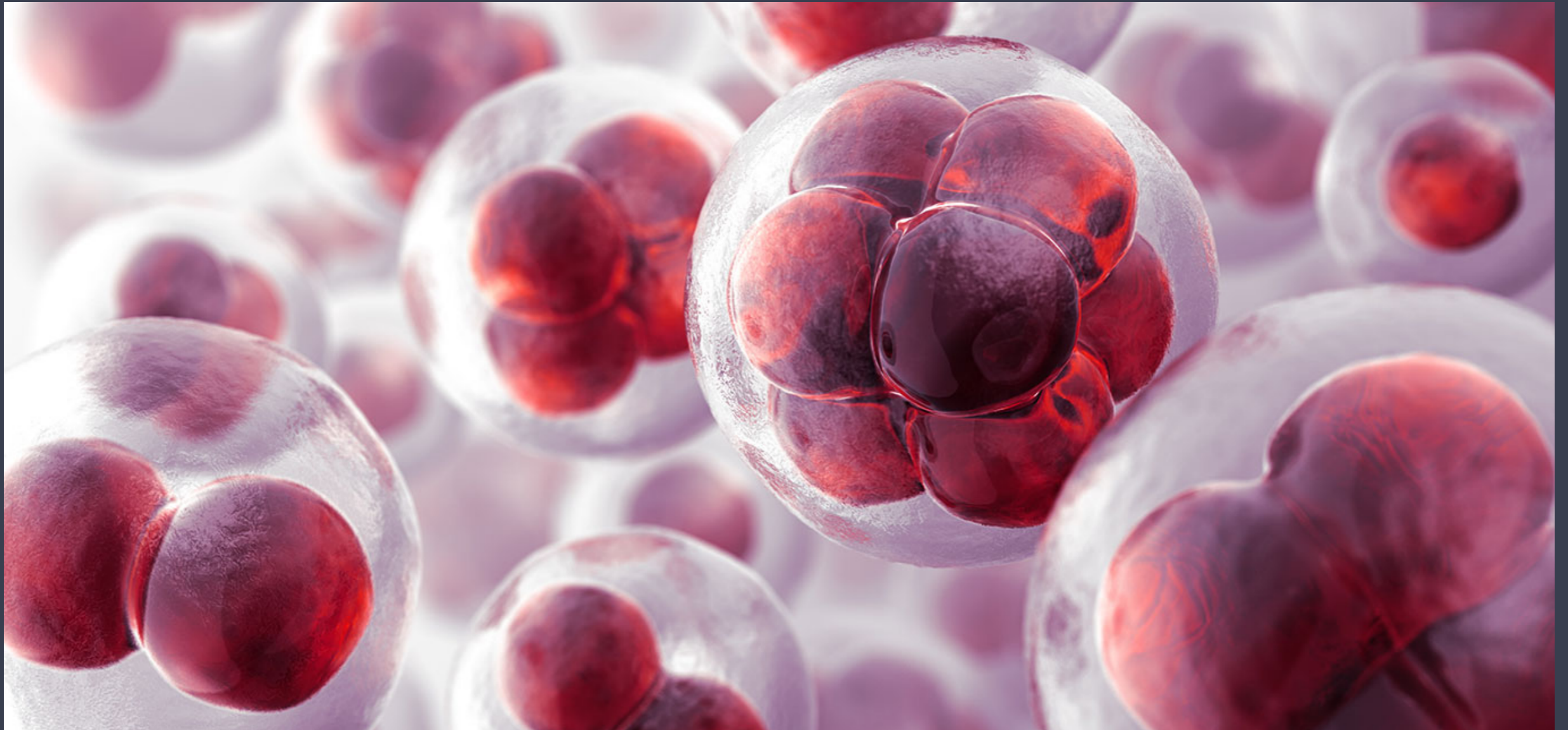
TOLERANCES: .00= ±.02 / .000 = ±.005	TITLE: CART, MCI, HOT ZONES		
SCALE: DO NOT SCALE DRAWING	SIZE: B	DWG. NO.: 1025-016	REV: 2
MATL: SEE ABOVE BOM	SCALE: 1:1		
FINISH: N/A	SHEET 1 OF 1		
DRAWN: M. RABY			
DATE: 7-29-2009			
APPROVED:			

PROPRIETARY AND CONFIDENTIAL
 THE INFORMATION CONTAINED IN THIS DRAWING IS THE SOLE PROPERTY OF LIFESPAN HEALTHCARE, LLC. ANY REPRODUCTION IN PART OR AS A WHOLE WITHOUT THE WRITTEN PERMISSION OF LIFESPAN HEALTHCARE, LLC IS PROHIBITED.



When the Emergency Departments get overwhelmed with patients, having deployment plans already in place make transitions faster, more efficient and more effective for both staff and patients. In a matter of minutes, inconspicuous rail applications can transform hallways and waiting rooms to accommodate additional respiratory therapy stations, opening up patient exam rooms for more critical patients.





**ARE YOU
READY?**

We Can Help...



270 Scientific Dr. #14 Norcross, GA 30092

www.nexxspan.com

jennie.clasby@nexxspan.com