

Equipment Rails, Headwalls & Accessories

For All Clinical Environments



Table of Contents

<i>Equipment Rails Overview</i>	<i>4</i>
<i>Rails</i>	<i>11</i>
<i>Adapters</i>	<i>15</i>
<i>Diagnostic Equipment</i>	<i>18</i>
<i>Infection Control Overview</i>	<i>27</i>
<i>Soap, Sanitizers, Wipes</i>	<i>32</i>
<i>Towel Dispensers</i>	<i>39</i>
<i>Gloves</i>	<i>48</i>
<i>Sharps</i>	<i>54</i>
<i>Baskets & Bins</i>	<i>63</i>
<i>Clips & Hooks</i>	<i>67</i>
<i>Shelves</i>	<i>71</i>

Table of Contents

<i>Additional Accessories</i>	<i>76</i>
<i>Equipment Mounts</i>	<i>80</i>
<i>Lighting</i>	<i>84</i>
<i>Work Surfaces</i>	<i>86</i>
<i>Infusion Management</i>	<i>91</i>
<i>Mobile Solutions</i>	<i>95</i>
<i>Medical Gas Expansion</i>	<i>99</i>
<i>Headwalls & Gas Rails</i>	<i>123</i>
<i>IV Transfer System</i>	<i>134</i>

Equipment Rails



- Provides user-defined equipment defined organization with limited cost and facility disruption
- Mount accessories to equipment rails with snap-action adapters
- Easily exchange and relocate devices to meet clinical and patient needs
- Adaptable and expandable for future needs
- Helps keep equipment off the floor for a better work environment
- Reduce the number of facility wall repairs by attaching devices to the rail rather than directly to the wall
- Relocate or exchange devices with minimal cost and disruption to the facility

Rails & Accessories



The bridge between the supply cart and the patient — the ideal tool to bring flexibility and organization to the clinical environment.

Using Rails and Accessories facility-wide for equipment management helps reduce and control inventory, simplifies swap out of technology and minimizes costs for maintenance and repair.

Convenient & Flexible

- Total freedom of equipment placement.
- Reduces inventory of bedside supplies.

Easy Expansion

- Simple medical gas expansion.
- Increase rail capacity to meet future needs by simply adding additional rails.

Improves Process

- Rearrange instantly without tools.
- Store only those supplies needed at each bedside.
- Continuity of supply management throughout each department.
- Optimum work flow achieved by option to personalize work space.



Rails & Accessories



Acuity Adaptable

- Universal use throughout the hospital ensures an acuity adaptable environment.
- Ease of installation with minimal interruption.
- Patient rooms can be reconfigured quickly to meet evolving needs.

Infection Control

- Eliminate patching and painting drywall by mounting infection control devices on the rail.
- Any brand of sharps, soap or sanitizer can be mounted on the Nexxspan™ Rail.

The Nexxspan™ Rail & Accessory system and its predecessor, The Fairfield® Rail System, have been installed in thousands of hospitals since the 1970s and continues to be the *Gold Standard* Equipment Management Rail System today.

Monitor Management

- Brackets, shelves, and articulated arms help users to place monitors where they can be seen and reached.

Infusion Management

- These accessories are fully rail-compatible and permit IV poles and IV hangers to be placed almost anywhere near a patient.

Supply Management

- Storage and presentation of diagnostic tools, disposables, gloves, supplies and other frequently used items is always a problem in crowded patient rooms.
- Our assortment of shelves, baskets and specialty containers keep the patient area organized and neat.



Before and After

PACU at St. Mary's Hospital Lewiston, ME

*Before Nexspan
Equipment Rails*



*After Nexspan Equipment
Rails Installed*



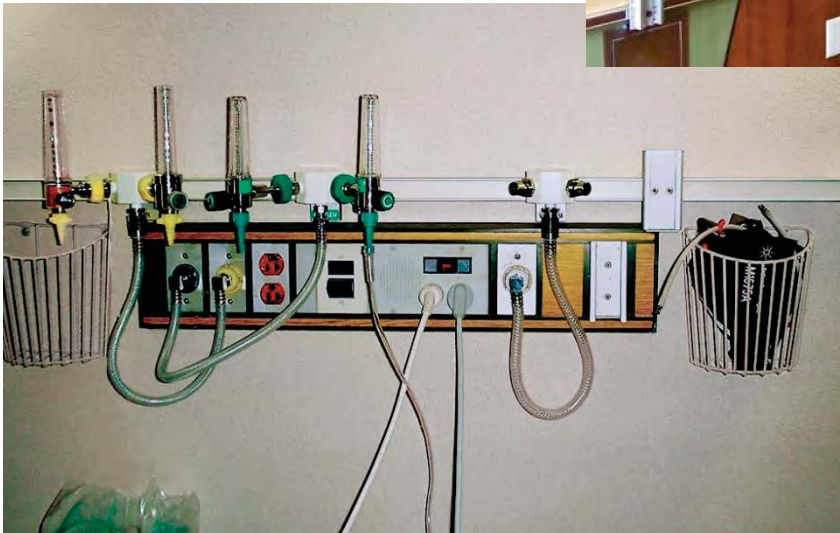
Equipment Rail Installs



Equipment Rail Installs



Equipment Rail Installs

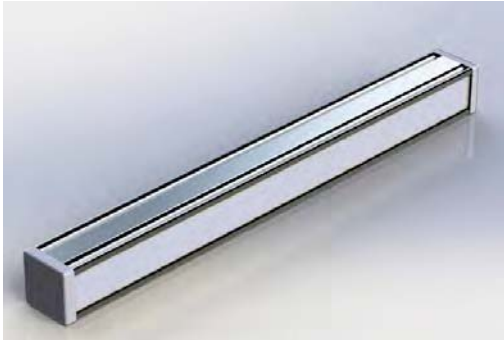


Rails



- Fairfield “style” rail
- Includes end caps and decorative inlay which is available in a variety of colors
- Supports medical equipment using snap action adapters to keep floor and cabinet space clear
- When mounted according to manufacturer’s specifications, heavy duty rail has a 62 pound weigh capacity per 16” centers. One foot rail has a 25 pound direct weight capacity
- Rails are made of aluminum with anodized finish
- Flexible system is expandable and improves staff productivity and workflow
- No exposed screw holes

Heavy Duty Equipment Rails



1002-012 – 1002-120



1002-P01



1002-P02



1002-P04

Part Number	Description
1002-012	1 Foot Heavy Duty Rail
1002-024	2 Foot Heavy Duty Rail
1002-036	3 Foot Heavy Duty Rail
1002-048	4 Foot Heavy Duty Rail
1002-060	5 Foot Heavy Duty Rail
1002-072	6 Foot Heavy Duty Rail
1002-084	7 Foot Heavy Duty Rail
1002-096	8 Foot Heavy Duty Rail
1002-108	9 Foot Heavy Duty Rail
1002-120	10 Foot Heavy Duty Rail
1002-P01	End Cap, Hard Plastic
1002-P02	Joiner
1002-P04	Inlay 1' – Variety of Colors

Mounting Hardware

Part Number	Description
1004-P01	Metal Studs and Backer Hardware, Flush Mount, Heavy and Light Duty Rail – Qty. 1
1004-P02	Drywall Hardware, Flush Mount for Heavy and Light Duty Rail – Qty. 1
1004-P03	Masonry Hardware, Flush Mount for Heavy and Light Duty Rail – Qty. 1
1004-P14	Pedestal for Mounting Equipment Rail – 30" High with a 4" x 6" Base



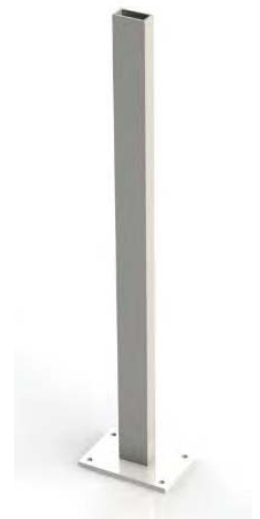
1004-P01



1004-P02

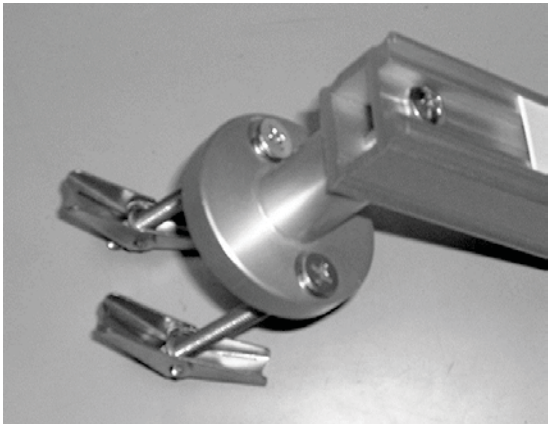


1004-P03



1004-P14

Mounting Hardware



Stand Off Example

Part Number	Description
1004-P04	Metal Studs or Backer Hardware, Stand-Off for Heavy Duty Rail – Qty. 1
1004-P05	Drywall Hardware, Stand-Off for Heavy Duty Rail – Qty. 1
1004-P06	Masonry Hardware, Stand-Off for Heavy Duty Rail – Qty. 1
1004-P07 (not shown)	Metal Studs or Backer Hardware, Stand-Off for Light Duty Rail – Qty. 1
1004-P08	Drywall Hardware, Stand-Off for Light Duty Rail – Qty. 1
1004-P09 (not shown)	Masonry Hardware, Stand-Off for Light Duty Rail – Qty. 1

Adapters



- Provides secure attachment of medical equipment to Nexspan equipment rails
- Snap on-off design allows easy repositioning of equipment
- Simple Allen screw provides option for locking devices onto a rail
- Adapters are made of aluminum with anodized finish

Single Width Adapters



1001-000



1001-001



1001-002



1001-003



1001-004



1001-005



1001-006

Part Number	Description
1001-000	Single Width, Blank
1001-001	Single Width, 2 Vertical Holes Drilled and Countersunk
1001-002	Single Width, 2 Horizontal Holes Drilled and Countersunk
1001-003	Single Width, 2 Vertical Holes Drilled and Tapped 10/32"
1001-004	Single Width, 2 Horizontal Holes Drilled and Tapped 10/32"
1001-005	Single Width, 1 Hole Drilled and Countersunk
1001-006	Single Width, 1 Hole Drilled and Tapped 10/32"

Double Width Adapters



1001-010



1001-011



1001-012

Part Number	Description
1001-010	Double Width, 2 Vertical Holes Drilled and Countersunk
1001-011	Double Width, 4 Holes Drilled and Countersunk
1001-012	Double Width, 2 Horizontal Holes Drilled and Countersunk
1001-013	Double Width, 2 Horizontal Holes Drilled and Tapped for M6 Screw
1001-014	Double Width, 4 Holes Drilled and Tapped 10/32"



1001-013



1001-014

Diagnostic Equipment



- Easy conversion of diagnostic equipment to Nexspan's "Fairfield" style rail.
- Mounts diagnostic equipment to rail using snap action adapter, with positive snap attachment lock feature.
- Snap action adapter has tamper proof secured lock feature via Allen screws allowing accessory to be tightly locked to equipment rail
- Adapter material is extruded aluminum with anodized finish

Mounting Kit for Dinamap NIBP Monitor

Part Number: 1010-009

*Monitor not included



Mounting Kit for Blood Pressure Cuff Basket

Part Number: 1012-P04

*Basket not included



Mounting Kit for Welch Allyn Blood Pressure Sphygmomanometer (Model: Tycos-Aneroid 509)

Part Number: 1012-P02

*Meter and basket not included



Mounting Kit for Welch Allyn 767 Series Aneroid Manometer (Model: Tycos-Aneroid 767)

Part Number: 1012-P05

*Meter and basket not included



Mounting Kit for Welch Allyn 777 Aneroid Manometer (Model: Tycos-Aneroid 777)

Part Number: 1012-P55

*Device not included



Mounting Kit for Welch Allyn Sure Temp Thermometer

Part Number: 1013-045

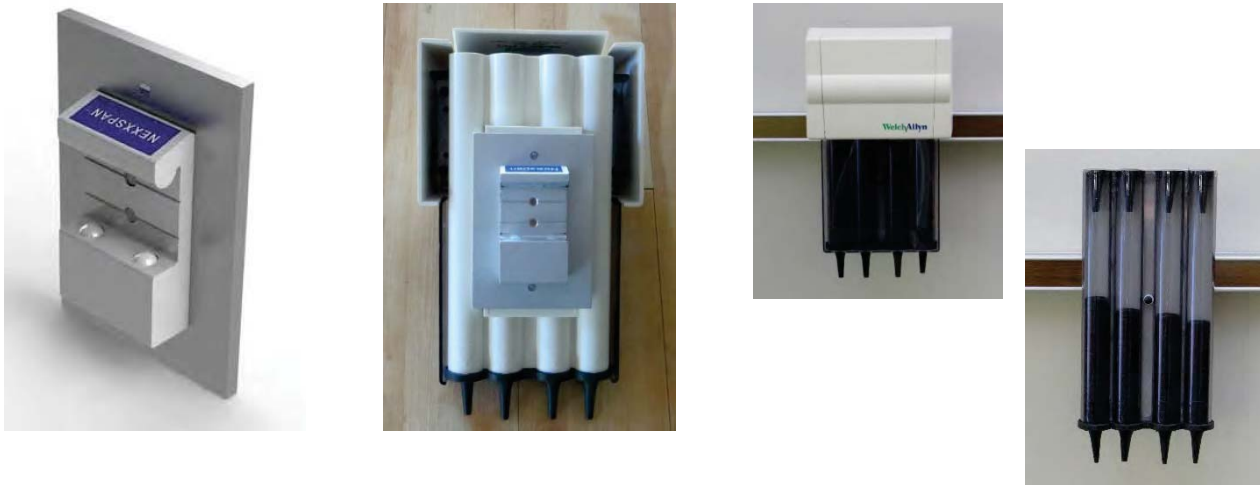
*Device not included



Mounting Kit for Speculum Container

Part Number: 1013-012

*Container not included



Mounting Kit for Speculum Container, Welch Allyn 777 Series (Model: Tycos-Aneroid 777)

Part Number: 1013-512

*Container not included



Mounting Kit for Welch Allyn 767 Ophthalmoscope Holder (Model: Tycos-Aneroid 767)

Part Number: 1013-011

*Device not included



Mounting Kit for Ophthalmoscope, Welch Allyn 777 Series (Model: Tycos-Aneroid 777)

Part Number: 1013-511

*Device not included



Mounting Kit for Welch Allyn 747 Ophthalmoscope Holder (Model: Tycos-Aneroid 747)

Part Number: 1013-010

*Device not included



Mounting Kit for Pole Mount Transducer

Part Number: 1013-025

*Pole measures 23.75" long with a 0.75" diameter



Mounting Kit for Universal Manometer

Part Number: 1013-016

*Meter not included



Mounting Kit for Magnahelic Gauge

Part Number: 1013-018

*Gauge not included



Mounting Kit for Bird Blender

Part Number: 1013-023

*Device not included



Mounting Kit for Rail Mount for Neopuff

Part Number: 1013-036

*Device not included



Infection Control



- Mount infection control items exactly where you need them without creating holes in the wall
- Promotes infection control
- Easily relocate or exchange dispensers without the need of wall repair
- Mount any brand of dispenser on the rails using rail adapters
- Adapters available for a wide range of third party infection control devices
- Adaptable and expandable for future needs

Infection Control Applications



Reduce Obsolescence - Never again patch holes in your dry wall by using the Nexxspan™ Rail and adapters for your infection control tools.

Heightened awareness of infection control necessitates positioning infection control application products in immediate patient care areas.

In the environment of ever changing contracts, the need to “change out” various manufacturers is increased. By mounting tools for infection control on the wall with Nexxspan™ Rails and adapters, the need for future drywall patching and painting are virtually eliminated.

Convenient

- Attach anything anywhere.
- Relocate devices as needed, by the staff.

Expandable

- Add other accessories to the rail to further support efficient clinical practice.

Adaptable

- Technology and contract vendors change. Rail can adapt to all new devices.

Reduce Costs

- Never patch drywall due to contract changes again.
- Swap adapters to replace broken dispensers rather than patch holes.

Flexible

- Locate devices for Infection Control application anywhere along the rail.

Efficient

- Reduce installation time and cost when installing new dispensers.
- Mount any brand of dispenser or device on the rail.



Infection Control Applications



Eliminate Drywall Repairs

Dispensers break; contracts change. Nexspan™ Rail and adapters will virtually eliminate the need to ever repair drywall again. Optimize your resources to other priorities, not to patching and painting holes.

Mount Infection Control Where It's Needed

The Nexspan™ Equipment Rail allows you to bring infection control devices to where you practice. Be it on a wall, by the sink or on a mobile supply cart, proper practice is now possible without compromise.



Infection Control Installs



Infection Control Installs



Soap, Sanitizer, & Wipes



- Mounts to Nexspan Equipment Management Rail, Fairfield “style” using snap action adapter, with positive snap attachment lock feature.
- Snap action adapter has tamper proof secured lock feature via Allen screws allowing accessory to be tightly locked to equipment rail
- Adapter material is extruded aluminum with anodized finish

Mounting Kit for Steris Germicidal Surface Wipes (Model: 1608-65)

Part Number: 1018-S01

*Dispenser not included



Mounting Kit for Steris 17 ounce All Care (Model: 6399-90)

Part Number: 1018-S02

*Dispenser not included



**Mounting Kit for Steris 9 ounce All Care
(Model: 6399-36)**

Part Number: 1018-S03

*Dispenser not included



**Mounting Kit for Steris Multi Use Hand Pump Dispenser
(Model: 1307-Q5 with Wall Bracket 1308-Q7)**

Part Number: 1018-S04

*Dispenser not included



Mounting Kit for PDI Sani Cloth, Metal Holder by others

Part Number: 1013-050

*Dispenser and wipes not included



Mounting Kit for 3M Avagard D Hand Antiseptic with Moisturizers

Part Number: 1013-055

*Dispenser not included



Mounting Kit for Medline Push Dispenser (Model: LX10PUSH, MSC097062)

Part Number: 1013-059

*Dispenser not included



Mounting Kit for Medline 8 ounce Epi-Clenz (Model: MSC097040)

Part Number: 1013-060

*Dispenser not included



Mounting Kit for Universal Soap, Lotion, Sanitizer

Part Number: 1013-112



Additional Dispenser Adapters Available

If you do not see your dispenser listed, contact Nexspan Healthcare for a complete list of available adapters

*Dispensers not included

Part Number	Adapters Available For:
1013-080	Huntington Hand Pump for Endure 18 oz., Model # 61439813 (also for Ecolab Disposacare)
1013-089	Endure Soap Dispenser – Ecolab # 92723188, 750 ml
1013-090	Ecolab Aseptic Wipes (requires Ecolab holder)
1013-091	Ecolab Bullseye Soap Dispenser, PN # 92022111
1013-092	Ecolab Hand Hygiene Soap Dispenser
1013-093	Ecolab 7 oz. Quick Care Sanitizer Foam
1013-094	Ecolab 15 oz. Quick Care Sanitizer Foam
1013-094A	Ecolab 9 oz. and 15 oz. Quick Care Foam with Drip Pan
1013-102	Huntington Hand Pump for Endure 1000 ml, model # 9722107 (also for Ecolab Disposacare)



Towel Dispensers



- Mounts to Nexspan Equipment Management Rail, Fairfield “style” using snap action adapter, with positive snap attachment lock feature.
- Snap action adapter has tamper proof secured lock feature via Allen screws allowing accessory to be tightly locked to equipment rail
- Adapter material is extruded aluminum with anodized finish

Mounting Kit for Tri-Fold Towel Dispenser

Part Number: 1013-075

*Dispenser not included



Mounting Kit for Georgia Pacific enMotion Automated Touchless Towel Dispenser (Model: 59462)

Part Number: 1013-076

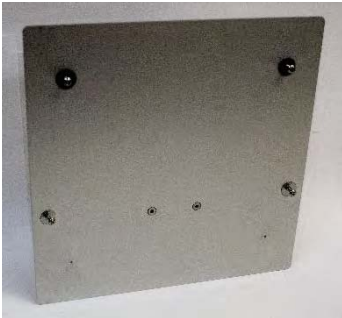
*Dispenser not included



Mounting Kit for Georgia Pacific Cormatic Mechanical Roll Towel Dispenser (Model: HDS200B)

Part Number: 1013-077

*Dispenser not included



Mounting Kit for Georgia Pacific Combination C-Fold/Multifold/ Big Fold Towel Dispenser (Model: 56665/01)

Part Number: 1013-078

*Dispenser not included



Mounting Kit for Georgia Pacific enMotion Impulse 10 Automated Towel Dispenser (Model: 59488)

Part Number: 1013-079

*Dispenser not included



Mounting Kit for Kimberly Clark Scottfold Towel Dispenser (Model: 09903, 09904)

Part Number: 1013-081

*Dispenser not included



Mounting Kit for Kimberly Clark In-Sight Sanitouch Hard Roll Towel Dispenser (Model: 09995, 09996)

Part Number: 1013-082

*Dispenser not included



Mounting Kit for Kimberly Clark Universal Windows Series Towel Dispenser (Model: 9905, 9906)

Part Number: 1013-085

*Dispenser not included



Mounting Kit for Georgia Pacific Chrome/White Combination C-Fold Multifold Towel Dispenser (Model: 56620, 56601)

Part Number: 1013-170

*Dispenser not included



Mounting Kit for Georgia Pacific enMotion Impulse 8 Automated Towel Dispenser (Model: 59498)

Part Number: 1013-171

*Dispenser not included



Mounting Kit for Georgia Pacific enMotion Stainless, Recessed Automated Touchless Towel Dispenser (Model: 59466)

Part Number: 1013-172

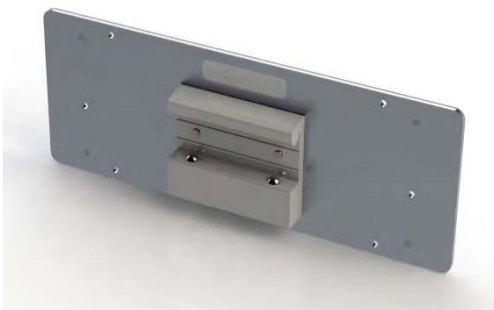
*Dispenser not included



Mounting Kit for Georgia Pacific Chrome Multifold Stainless Towel Dispenser (Model: 54720)

Part Number: 1013-173

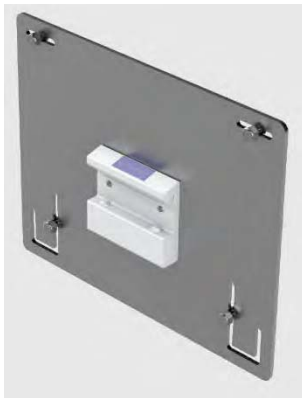
*Dispenser not included



Mounting Kit for Bobrick Stainless Steel Multifold Towel Dispenser (Model: 54720)

Part Number: 1013-174

*Dispenser not included



Mounting Kit for Georgia Pacific Sofpull Towel Dispenser (Model: 58470, 58487)

Part Number: 1013-182

*Dispenser not included



Mounting Kit for Georgia Pacific Sofpull Junior Capacity Centerpull Towel Dispenser (Model: 58008)

Part Number: 1013-191

*Dispenser not included



Mounting Kit for Kimberly Clark Insight Compact Scottfold Towel Dispenser (Model: 09215, 09216, 09217, 09214)

Part Number: 1013-196

*Dispenser not included



Gloves



- Mounts to Nexspan Equipment Management Rail, Fairfield "style" using snap action adapter, with positive snap attachment lock feature.
- Snap action adapter has tamper proof secured lock feature via Allen screws allowing accessory to be tightly locked to equipment rail
- Adapter material is extruded aluminum with anodized finish

Nexspan Glove Box Holder with Rail Mount

**Includes glove holder and rail mount*

Single Box Holder

Part Number: 1013-002

**Measures 6" wide x 11" long x 4" deep.*



Two Box Holder

Part Number: 1013-003

**Measures 6" wide x 18" long x 4" deep.*



Three Box Holder

Part Number: 1013-129

**Measures 10" wide x 16" long x 4" deep.*



Mounting Kit for Omnimed 3 Box Glove Holder for Horizontal Rail Mount – White Powder (Model: 305380)

Part Number: 1013-130

*Holder not included



Mounting Kit for Bowman 3 Box Glove Holder for Vertical or Horizontal Rail Mount (Model: GP-015)

Part Number: 1013-132V – Vertical Rail Mount

1013-132H – Horizontal Rail Mount

*Holder not included



1013-132V



1013-132H



Mounting Kit for Medline 3 Box Glove Holder for Vertical or Horizontal Rail Mount (Model: MDS193097B/GB-003)

*Part Number: 1013-145 – Horizontal Rail Mount
1013-146 – Vertical Rail Mount*

*Holder not included



Mounting Kit for Eco Glove by Zing Green Products 3 Box Glove Holder for Horizontal or Vertical Rail Mount (Model: ZING 7222)

*Part Number: 1013-177H – Horizontal Rail Mount
1013-177V – Vertical Rail Mount*

*Holder not included



1013-177H



1013-177V



Mounting Kit for Market Lab 3 Box Glove Holder for Horizontal or Vertical Rail Mount (Model: ML3615)

*Part Number: 1013-187H – Horizontal Rail Mount
1013-187V – Vertical Rail Mount*

*Holder not included



1013-187V



1013-187H



Additional Glove Holder Adapters Available

If you do not see your glove holder listed, contact Nexspan Healthcare for a complete list of available adapters.

*Dispensers not included

Part Number	Adapters Available For:
1013-115	Phipps & Bird Accente 3 Box Glove Holder (Model: 10-GBTR-18)
1013-116	Bowman 3 Box Glove Holder Vertical Mount (Model: GS-123)
1013-117	Bowman 3 Box Glove Holder Horizontal Mount (Model: GS-123)
1013-118	Grainger 4 Box Glove Holder Vertical Mount (Model: 6GKY5)
1013-119	Grainger 4 Box Glove Holder Horizontal Mount (Model: 6GKY5)
1013-131	Grainger 3 Box Glove Rack Horizontal Mount (Model: 6GKY3)
1013-133	Grainger 3 Box Glove Rack Vertical Mount Model: 6GYK3)
1013-137	Bowman 4 Box Glove Holder for Horizontal Rail (Model: GP-061)
1013-138	Bowman 3 Box Glove Holder for Horizontal Rail (Model: GW-055)
1013-194	Bowman Single Box Glove Holder for Horizontal Rail



Sharps



- Mounts to Nexspan Equipment Management Rail, Fairfield “style” using snap action adapter, with positive snap attachment lock feature.
- Snap action adapter has tamper proof secured lock feature via Allen screws allowing accessory to be tightly locked to equipment rail
- Adapter material is extruded aluminum with anodized finish

Rail Mount for Sharps Universal Style Container

Part Number: 1013-009

*Container not included



Rail Mount for BD Sharps Wall Collector 5.4 qt (Models 305447, 305426)

Part Number: 1013-038

*Container and wall collector not included



Rail Mount for Kendall Large Sharps Container

Part Number: 1013-039

*Container not included



Rail Mount for Daniels Sharpsmart (Models: S14 or S22 when using mounting kit bracket 4005007000, LH4000300000 or RH4000400000)

Part Number: 1013-040

*Container not included



Rail Mount for Kendall Standard Sharps Container

Part Number: 1013-041

*Container not included



Rail Mount for Stericycle 2 Gallon Sharps, Lockable Cabinet (Model: OC-02-2004)

Part Number: 1013-046

*Container not included



Rail Mount for Hidden Bracket Sharps-A-Gator (Model: 31158960; Works with 4838, 4822, 4823, 4835, 4833, 4836)

Part Number: 1013-047

*Sharps container and Sharps-A-Gator not included



Rail Mount for BD Recykleen Cabinet Sharps (Model: 305096)

Part Number: 1013-097

*Container not included



Rail Mount for Kendall (Covidien) Sharps (Model: 8836SA and SWM3100H)

Part Number: 1013-098

*Container not included



Rail Mount for BD Sharps Wall Cabinet for 5.4 qt (Model: 305017)

Part Number: 1013-099

*Container not included



Rail Mount for Stericycle Sharps Locking Wall Mount (Model: 0203WMA)

Part Number: 1013-103

*Container not included



Rail Mount for Stericycle 3 or 4 Gallon Sharps, Lockable Cabinet (Model: 0203WMA)

Part Number: 1013-185

*Container not included



Rail Mount for Standard Covidien/ Kendall Sharps 5 quart

Part Number: 1013-188

*Container not included



Rail Mount for Standard Covidien/ Kendall Wire Sharps Holder (Model: 8528C)

Part Number: 1013-201

*Container and wire holder not included



Rail Mount for Medline Wire Sharps (Model: MDS707912)

Part Number: 1013-202

*Container and wire holder not included



Baskets & Bins



- Mounts to Nexspan Equipment Management Rail, Fairfield “style” using snap action adapter, with positive snap attachment lock feature.
- Snap action adapter has tamper proof secured lock feature via Allen screws allowing accessory to be tightly locked to equipment rail
- Adapter material is extruded aluminum with anodized finish

Baskets



1011-001

Part Number	Description
1011-001	Utility/BP Cuff Basket with Single Rail Mount
1011-002	Fixed Basket, Rail Mount - 10" W x 6" D x 4" H
1011-003	Fixed Basket with 3 Dividers, Rail Mount -18" W x 9" D x 4" H



1011-002



1011-003

Bins



1011-100



1011-101



1011-102



1011-103

Part Number	Description
1011-100	3 Bin Tilt Out Storage Bin OD – 7 3/4" D x 23 5/8" W x 9 1/2" H Bins – 5 7/8" D x 7 3/8" W x 8 5/8" H
1011-101	4 Bin Tilt Out Storage Bin OD – 6 5/8" D x 23 5/8" W x 8 1/8" H Bins – 5" D x 5 5/8" W x 7 1/2" H
1011-102	5 Bin Tilt Out Storage Bin OD – 5 1/4" D x 23 5/8" W x 6 1/2" H Bins – 3 3/4" D x 4 1/2" W x 5 3/4" H
1011-103	6 Bin Tilt Out Storage Bin OD – 3 5/8" D x 23 5/8" W x 4 1/2" H Bins – 2 5/8" D x 3 1/2" W x 3 3/4" H

- White outer plastic container with clear bin which opens to 45° angle
- Bins are completely removable and easily cleaned with soap and water
- Mounts with two adapters to Nexspan Equipment Management Rail
- Bins made of break resistant injection molded material

Catheter Holders

Part Number	Description
1013-005	Short Catheter Holder Measures 7" W x 5" D x 8" H
1013-006	Long Catheter Holder Measures 6" W x 4" D x 18" H



1013-005



1013-006

- White powder coat finish with break resistant clear plastic front
- Easily cleaned with soap and water
- Mounts with single adapter to Nexspan Equipment Management Rail

Clips & Hooks



- Snap on-off design attaches securely to Nexspan equipment rails.
- Simple Allen screw provides option for locking devices onto a rail
- Durable finish resists scratches, stains and cleaning solutions
- Adapters are made of aluminum with anodized finish

Hooks – Page 1 of 2


1013-013

Part Number	Description
1013-013	Single Hook Holder with Rail Mount - Hook measures 5" long
1013-014	3 Utility Hook Holder with Rail Mount - Bar measures 12" wide with 3 – 5" long hooks
1013-121	Single "J" Hook



1013-014



1013-121

Holders


1013-004

Part Number	Description
1013-004	Resuscitator Holder
1013-120	X-ray Apron Holder - Hook measures 1" from back edge and is 2" long
1013-026	Cord Wrap Holder - Holder measures 6" H; max weight load 10 lbs.



1013-120



1013-026

Clips



1013-029



1013-030



1013-033



1013-113



1013-114

Part Number	Description
1013-029	6 Clip Organizer with Rail Mount - Bar measures 22" wide, white clips
1013-030	4 Clip Organizer with Rail Mount - Bar measures 14" wide, white clips
1013-033	3 Clip Organizer with Rail Mount - Bar measures 12" wide, white clips
1013-113	Single Hook Holder with 3 Clips and Rail Mount - Hook measures 5" long, white clips
1013-114	3 Hook Holder with 9 Clips and Rail Mount - Bar measures 12" wide, hooks measure 5" long, 3 white clips per hook

Shelves



- A variety of shelf sizes and features for convenient placement of medical devices.
- Positions equipment for optimum visibility
- Durable finish resists scratches, stains and cleaning solutions
- Snap on-off design attaches securely to Nexspan equipment rails.
- Simple Allen screw provides option for locking devices onto a rail
- Adapters are made of aluminum with anodized finish

Flat Shelves



1009-001



1009-002



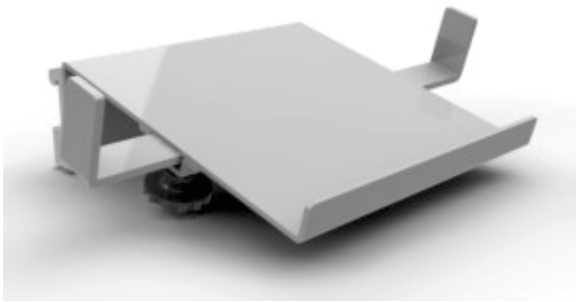
1009-003



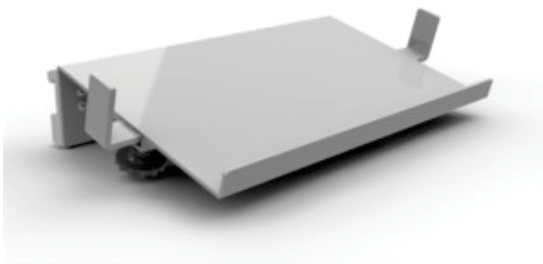
1009-004

Part Number	Description
1009-001	10" W x 8" D Flat Shelf - 25 lb weight capacity
1009-002	10" W x 13" D Flat Shelf - 25 lb weight capacity
1009-003	13" W x 13" D Flat Shelf - 25 lb weight capacity
1009-004	19" W x 13" D Flat Shelf - 25 lb weight capacity

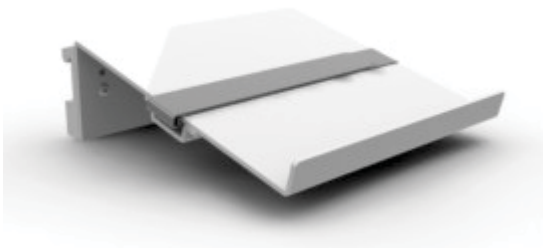
Angled Shelves



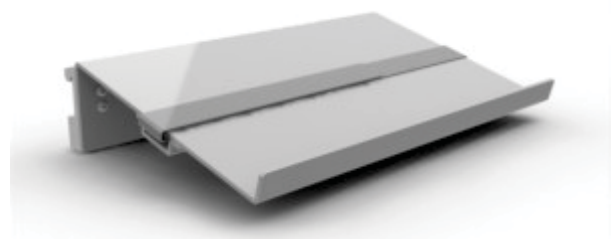
1009-005



1009-006



1009-014



1009-015

Part Number	Description
1009-005	8" W x 8" D Angled Shelf - 25 lb weight capacity
1009-006	13" W x 8" D Angled Shelf - 25 lb weight capacity
1009-014	8" W x 8" D Angled Shelf with Strap - Strap measures 1" wide, 36' overall length - 25 lb weight capacity
1009-015	13" W x 8" D Angled Shelf with Strap - Strap measures 1" wide, 36" overall length - 25 lb weight capacity

Foldable Hinged Shelves

*Allows shelf to be folded out of the way when not in use



1009-007



Part Number	Description
1009-007	9" W x 12" D Foldable, Hinged Shelf with Rail Mount - 25 lb weight capacity
1009-008	13 ½" W x 10" D Foldable Hinged Shelf with Rail Mount - 25 lb weight capacity
1009-009	17" x 12" Foldable Hinged Shelf with Rail Mount - 25 lb weight capacity



1009-008



1009-009



WORXX Shelves

*Single hand use shelf for a variety of procedure and equipment applications. Shelf can be folded out of the way when not in use



Part Number	Description
1009-100	10" x 15" WORXX Station Fold Up Shelf with Rail Mount
1009-101	10" x 15" WORXX Station Fold Up Shelf with 1" – 1.5" Pole Mount

1009-100



1009-101



Additional Accessories



- A variety of unique adapters for specialty applications
- Durable finish resists scratches, stains and cleaning solutions
- Snap on-off design attaches securely to Nexspan equipment rails.
- Simple Allen screw provides option for locking devices onto a rail
- Adapters are made of aluminum with anodized finish

Additional Accessories– Page 1 of 3



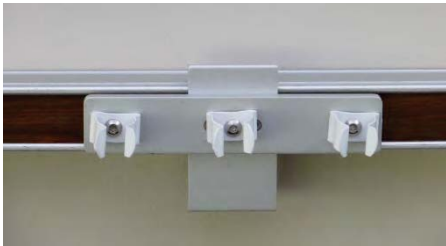
1008-001
*Vacuum bottle not included



Part Number	Description
1008-001	Vacuum Bottle with Slide Mount *Vacuum bottle not included
1013-001	Chart Holder – 10"H x 13"W *Includes chart holder and mount
1013-007	3 Clip Hose Holder – 5" W *Includes clips, holder and mount
1013-008	6 Clip Hose Holder *Includes clips, holder and mount



1013-001



1013-007



1013-008



Additional Accessories– Page 2 of 3



1013-015

Part Number	Description
1013-015	"E" Cylinder Bottle Holder – 5.5"W x 22.5" L *Includes bottle holder and mount
1013-020	Waste Basket and Universal Mount *Includes waste basket and mount
1013-021	Waste Basket Mount *Includes mount only
1013-022	Universal Pole Mount
1013-019	Rail, Light Duty, 8", Pole Mounting



1013-020



1013-022

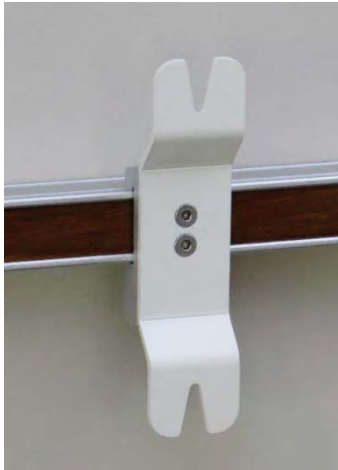


1013-021



1013-019

Additional Accessories– Page 3 of 3



1013-026

Part Number	Description
1013-026	Cord Wrap - Measures 6" high; maximum weight load 10 lbs. *Includes wrap and mount
1013-027	Telephone Mount - Measures 4.5" H x 2.75" W
1013-028	Flex Arm Respiratory Circuit Holder Mount
1013-042	Holder for Emesis-Bag for Wall Mount Dispenser



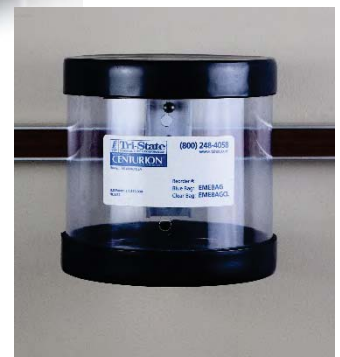
1013-028



1013-042



1013-027

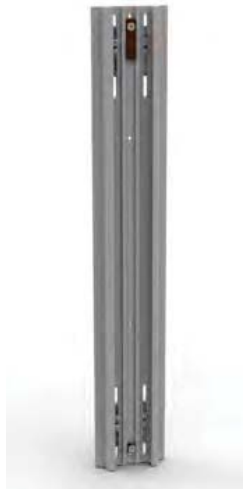


Equipment Mounts



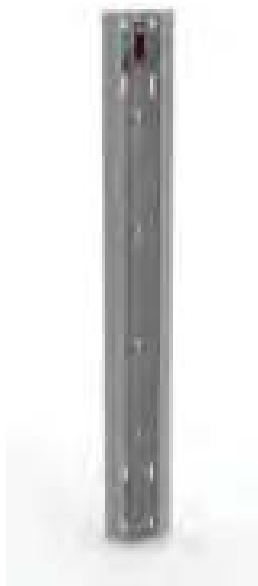
- Provides secure attachment of monitor
- GCX arm provided by others
- Durable finish resists scratches, stains and cleaning solutions
- Snap on-off design attaches securely to Nexspan equipment rails.
- Simple Allen screw provides option for locking devices onto a rail
- Adapters are made of aluminum with anodized finish

Equipment Mounts – Page 1 of 3

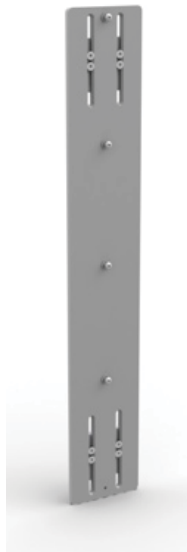


1010-001

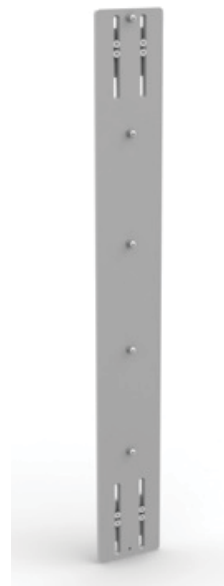
Part Number	Description
1010-001	GCX Channel with Adapters – 16” – 24” Span between Rail
1010-002	GCX Channel with Adapters – 20” – 28” Span between Rail
1010-003	GCX Adapter Plate (GCX by others) – 16” – 24” Span between Rail
1010-004	GCX Adapter Plate (GCX by others) – 20” – 28” Span between Rail
1010-005	GCX Adapter Plate (GCX by others) – 16” – 24” Span between Rail and MGR



1010-002



1010-003



1010-004



1010-005

Equipment Mounts – Page 2 of 3



1010-006

Part Number	Description
1010-006	GCX Channel with Adapters – 16" x 24" Span between Rail and MGR
1010-010	GCX Channel – 7", 38mm Pole Mounting
1010-012	GCX Channel 25" Wall Mounting
1010-013	GCX Channel 31" Wall Mounting



1010-010



1010-012



1010-013

Equipment Mounts – Page 3 of 3



1010-016

Part Number	Description
1010-016	GCX Adapter Plate (GCX by others) – 16” – 24” between Flush Mounted Heavy Duty Rail, Spanning a MGR
1010-017	GCX Adapter Plate (GCX by others) – 20” – 28” between Flush Mounted Heavy Duty Rail, Spanning a MGR
1010-018	GCX Channel with Adapters – 16” – 24” between Flush Mounted Heavy Duty Rail, Spanning a MGR
1010-019	GCX Channel with Adapter – 20” – 28” between Flush Mounted Heavy Duty Rail, Spanning a MGR



1010-017



1010-018



1010-019

Lighting



- Provides flexible attachment of user controlled lighting
- Durable finish resists scratches, stains and cleaning solutions
- Snap on-off design attaches securely to Nexspan equipment rails.
- Simple Allen screw provides option for locking devices onto a rail
- Adapters are made of aluminum with anodized finish

Lighting



1015-001

Part Number	Description
1015-001	Luxo Lamp Holder
1015-003	Waldman Euro Style Lamp Holder
1015-004	Waldman Halux #50SX Task Light



1015-003



1015-004

Work Surfaces



- Component based system of work surfaces and storage drawers
- Durable finish resists scratches, stains and cleaning solutions
- Snap on-off design attaches securely to Nexspan equipment rails.
- Simple Allen screw provides option for locking devices onto a rail
- Adapters are made of aluminum with anodized finish

Work Surfaces – Page 1 of 4

Part Number	Description
1011-004	Rail Kit, C-Frame Side, Light Duty Rail with Stand Offs
1011-004B	Rail Kit, C-Frame Side, Heavy Duty Rail, Flush Mount
1011-016	Extended Counter Top – 32" Wide
1011-017	Standard Counter Top for C-Frame



1011-004



1011-016

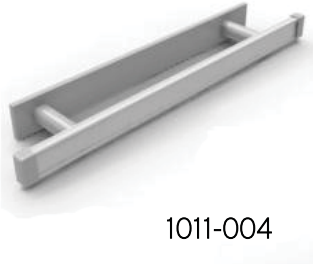


1011-004B

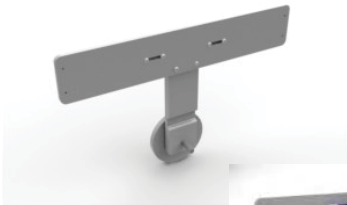


1011-017

Work Surfaces – Page 2 of 4



Part Number	Description
1011-004	C-Frame Side, Light Duty Rail with Stand Offs Mount Kit
1011-005A	C-Frame Mounting Adapter Rail Only, for Heavy Duty Rail Mounting
1011-006	C-Frame, with A and B Drawers, Standard Top, Mounting Kit to Equipment Rail
1011-007	C-Frame with A and B Drawers, Extended Top, Mounting Kit to Equipment Rail
1011-015	C-Frame – 22" x 17" x 10"



Work Surfaces – Page 3 of 4



1011-018



1011-019



1011-020

Part Number	Description
1011-018	Drawer A – 3" High – Non-Lock
1011-019	Drawer B – 6" High – Non-Lock
1011-020	Drawer C – 9" High – Non-Lock
1011-021	Drawer A – 3" High – Lockable Front
1011-022	Drawer B – 6" High – Lockable Front
1011-023	Drawer C – 9" High – Lockable Front



1011-021



1011-022



1011-023

Work Surfaces – Page 4 of 4

Part Number	Description
1011-027	Touchpad Lock, 3" High, A-Drawer
1011-028	Touchpad Lock, 6" High, B-Drawer
1011-029	Touchpad Lock, 9" High C-Drawer



1011-027



1011-029



1011-028

Infusion Management



- Safely organizes infusion equipment
- Adaptable to changing technologies and patient care protocols
- Eliminates floor stands
- Durable finish resists scratches, stains and cleaning solutions
- Snap on-off design attaches securely to Nexspan equipment rails.
- Simple Allen screw provides option for locking devices onto a rail
- Adapters are made of aluminum with anodized finish

Infusion Management – Page 1 of 3



1013-024

Part Number	Description
1013-024	Post Holder - 1" Diameter x 4" High
1014-001	Single Infusion Pump Holder, Single Rail Mount -36" x 20" Pole, 3 Hooks
1014-002	Dual Swivel Infusion Pump Holder, Single Rail Mount - 36" x 20" Pole, 3 Hooks per Pole
1014-003	Fixed Single Infusion Pump Holder, Dual Rail Mount - 36" x 20" Pole, 3 Hooks
1014-004	Fixed Single Infusion Pump Holder, Dual Rail Mount – 48" x 20" Pole, 3 Hooks



1014-001



1014-002



1014-003



1014-004

Infusion Management – Page 2 of 3



1014-005



1014-006



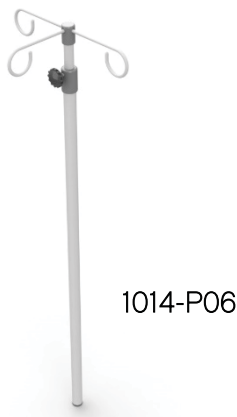
1014-007



1014-P11

Part Number	Description
1014-005	Fixed Single Infusion Pump Holder, Single Rail Mount – 16" x 10" Pole, 3 Hooks
1014-006	Fixed Single Infusion Pump Holder, Single Rail Mount – 25" x 15" Pole, 3 Hooks
1014-007	Fixed Single Infusion Pump Holder, Single Rail Mount – 30" x 20" Pole, 3 Hooks
1014-P11	Infusion Pump Mount Holder – 1" Diameter x 6" high with Snap Action Adapter for Rail Mounting

Infusion Management – Page 3 of 3



Part Number	Description
1014-011	IV Swing Arm – 12" x 20", 1.5" Pole Mount with 36" IV Pole
1014-012	IV Swing Arm – 12" x 20", GCX Mounting with 36" IV Pole
1014-P06	Single Pole Holder – 36" Long with 20" IV Pole and 3-Hook Hanger
1014-P07	Single Holder – 1" IV Pole Holder, Rail Mount with Snap Action Adapter for Rail Mounting
1014-008	IV Swing Arm – 12" x 20", 1.5" Pole Mount, Arm Only
1014-010	Single Articulation IV Swing Arm – 12", for 1-1/2" Pole Mount



1014-P07



1014-010



1014-008

Mobile Solutions



- Convenient solutions to manage surge and mass casualty solutions
- Durable finish resists scratches, stains and cleaning solutions
- Snap on-off design attaches securely to Nexspan equipment rails.
- Simple Allen screw provides option for locking devices onto a rail
- Adapters are made of aluminum with anodized finish

Mobile Solutions



1025-001

Part Number	Description
1025-001	Memo 2 Cart: 3 Parallel Rails
1025-001S	Memo 2 Cart: Short with C-Frame Adapter
1025-002	Memo 2 Cart: 2 Parallel Rails, 2 Swivel Rails, 1 Adapter Rail for Mounting C-Frame
1025-015	Memo 4 Cart: Oxygen "H" Tanks with Integrated Equipment Management



1025-001S



1025-002



1025-015

Medical Gas Expansion



- Unique compact design saves horizontal rail space
- All gas blocks pre-drilled for side check valves allowing for future expansion
- Durable finish resists scratches, stains and cleaning solutions
- Snap on-off design attaches securely to Nexspan equipment rails.
- Simple Allen screw provides option for locking devices onto a rail
- Adapters are made of aluminum with anodized finish

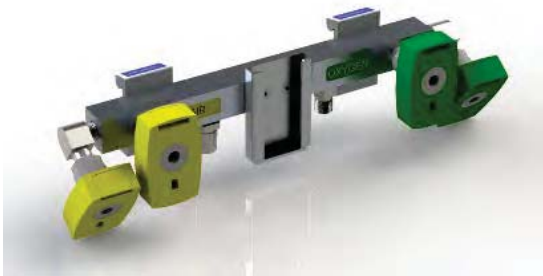
Ventilator Manifolds



1006-001



1006-002



1006-003



1006-004

Part Number	Description
1006-001	Air/Oxygen Manifold with 2 Air DISS and 2 Oxygen DISS with Blender Bracket
1006-002	Air/Oxygen Manifold with 3 Air DISS and 3 Oxygen DISS with Blender Bracket
1006-003	Air/Oxygen Manifold with 2 Air and 2 Oxygen Chemetron Quick-Connectors with Blender Bracket
1006-004	Air/Oxygen Manifold with 2 Air and 2 Oxygen Ohmeda Quick-Connectors with Blender Bracket

- Organizes ventilator connectors for safe positive connections
- Provides separation between respiratory and nursing functions
- Compact design saves horizontal rail space

Oxygen Gas Blocks – Page 1 of 4



1105-001

Part Number	Description
1105-001	1 - 1/8" NPT Front
1105-011	1 - 1/8" NPT Front, DISS Side
1105-002	1 DISS Front
1105-012	1 DISS Front, DISS Side
1105-003	1 Ohmeda Quick Connect Front
1105-013	1 Ohmeda Quick Connect Front, DISS Side



1105-011



1105-012



1105-013



1105-002



1105-003

Oxygen Gas Blocks – Page 2 of 4



1105-004

Part Number	Description
1105-004	1 Chemetron Quick Connect Front
1105-014	1 Chemetron Quick Connect Front, DISS Side
1105-005	1 Puritan Quick Connect Front
1105-015	1 Puritan Quick Connect Front, DISS Side



1105-014



1105-005



1105-015

Oxygen Gas Blocks – Page 3 of 4

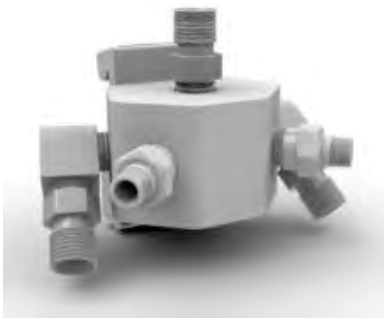


1205-001

Part Number	Description
1205-001	2 - 1/8" NPT Front
1205-011	2 - 1/8" NPT Front, DISS Side
1205-111	2 - 1/8" NPT Front, 2 DISS Side, Top Feed
1205-002	2 DISS Front
1205-012	2 DISS Front, DISS Side



1205-011



1205-111



1205-002



1205-012

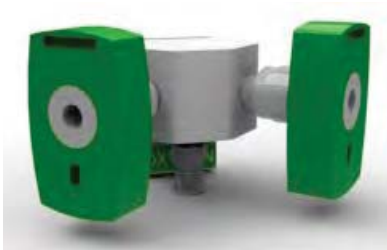
Oxygen Gas Blocks – Page 4 of 4



1205-003



1205-013



1205-004



1205-014



1205-005



1205-015

Part Number	Description
1205-003	2 Ohmeda Quick Connect Front
1205-013	2 Ohmeda Quick Connect Front, DISS Side
1205-004	2 Chemetron Quick Connect Front
1205-014	2 Chemetron Quick Connect Front, DISS Side
1205-005	2 Puritan Quick Connect Front
1205-015	2 Puritan Quick Connect Front, DISS Side

Oxygen Outlet Splitter Blocks



1006-017

Part Number	Description
1006-017	DISS to 2 DISS Outlets
1006-009	Chemetron Quick Connect to 2 DISS Outlets
1006-007	Ohmeda Quick Connect to 2 DISS Outlets
1006-019	Puritan Quick Connect to 2 DISS Outlets



1006-007



1006-009



1006-019

Oxygen Hoses – Page 1 of 3



1007-001

Part Number	Description
1007-001	24" DISS to DISS Handnut Straight
1007-301	24" DISS Straight to DISS Handnut with 90° Fitting
1007-004	24" DISS to Ohmeda Style Quick Connect with 90° Fitting
1007-005	24" DISS to Chemetron Style Quick Connect with 90° Fitting
1007-006	24" DISS to Puritan Style Quick Connect with 90° Fitting



1007-301



1007-005



1007-004



1007-006

Oxygen Hoses – Page 2 of 3

Part Number	Description
1007-101	36" DISS to DISS Handnut Straight
1007-311	36" DISS Straight to DISS Handnut with 90° Fitting
1007-104	36" DISS to Ohmeda Style Quick Connect with 90° Fitting
1007-105	36" DISS to Chemetron Style Quick Connect with 90° Fitting
1007-106	36" DISS to Puritan Style Quick Connect with 90° Fitting
1007-120	36" DISS to DISS with 90° Fitting
1007-121	36" DISS to DISS Straight



Oxygen Hoses – Page 3 of 3

Part Number	Description
1007-201	48" DISS to DISS Handnut Straight
1007-220	48" DISS to DISS with 90° Fitting
1007-321	48" DISS Straight to DISS Handnut with 90° Fitting
1007-204	48" DISS to Ohmeda Style Quick Connect with 90° Fitting
1007-205	48" DISS to Chemetron Style Quick Connect with 90° Fitting
1007-206	48" DISS to Puritan Style Quick Connect with 90° Fitting



1007-201



1007-220



1007-321



1007-205



1007-204



1007-206

Air Gas Blocks – Page 1 of 4



1125-001

Part Number	Description
1125-001	1 - 1/8" NPT Front
1125-011	1 - 1/8" NPT Front, DISS Side
1125-002	1 DISS Front
1125-012	1 DISS Front, DISS Side



1125-011



1125-002



1125-012

Air Gas Blocks – Page 2 of 4

Part Number	Description
1125-003	1 Ohmeda Quick Connect Front
1125-013	1 Ohmeda Quick Connect Front, DISS Side
1125-004	1 Chemetron Quick Connect Front
1125-014	1 Chemetron Quick Connect Front, DISS Side
1125-005	1 Puritan Quick Connect Front
1125-015	1 Puritan Quick Connect Front, DISS Side



1125-003



1125-004



1125-005



1125-013



1125-014



1125-015

Air Gas Blocks – Page 3 of 4



1225-001

Part Number	Description
1225-001	2 - 1/8" NPT Front
1225-011	2 - 1/8" NPT Front, DISS Side
1225-111	2 - 1/8" NPT Front, 2 DISS Side, Top Feed
1225-002	2 DISS Front
1225-012	2 DISS Front, DISS Side



1225-011



1225-002



1225-111



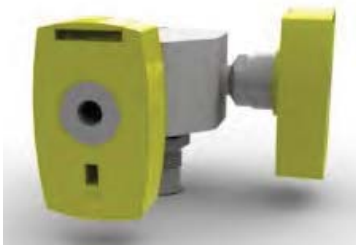
1225-012

Air Gas Blocks – Page 4 of 4

Part Number	Description
1225-003	2 Ohmeda Quick Connect Front
1225-013	2 Ohmeda Quick Connect Front, DISS Side
1225-004	2 Chemetron Quick Connect Front
1225-014	2 Chemetron Quick Connect Front, DISS Side
1225-005	2 Puritan Quick Connect Front
1225-015	2 Puritan Quick Connect Front, DISS Side



1225-003



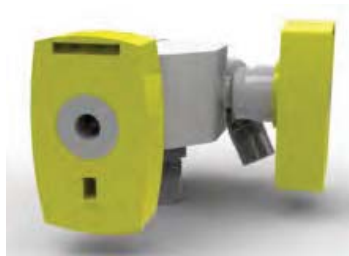
1225-004



1225-005



1225-013



1225-014



1225-015

Air Outlet Splitter Blocks



1006-016



1006-008



1006-005



1006-021

Part Number	Description
1006-016	DISS to 2 DISS Outlets
1006-008	Chemetron Quick Connect to 2 DISS Outlets
1006-005	Ohmeda Quick Connect to 2 DISS Outlets
1006-021	Puritan Quick Connect to 2 DISS Outlets

Air Hoses – Page 1 of 3



1007-003

Part Number	Description
1007-003	24" DISS to DISS Handnut Straight
1007-303	24" DISS Straight to DISS Handnut with 90° Fitting
1007-010	24" DISS to Ohmeda Style Quick Connect with 90° Fitting
1007-011	24" DISS to Chemetron Style Quick Connect with 90° Fitting
1007-012	24" DISS to Puritan Style Quick Connect with 90° Fitting



1007-303



1007-011



1007-010



1007-012

Air Hoses – Page 2 of 3



1007-103

Part Number	Description
1007-103	36" DISS to DISS Handnut Straight
1007-118	36" DISS to DISS with 90° Fitting
1007-122	36" DISS to DISS Straight
1007-110	36" DISS to Ohmeda Style Quick Connect with 90° Fitting
1007-111	36" DISS to Chemetron Style Quick Connect with 90° Fitting
1007-112	36" DISS to Puritan Style Quick Connect with 90° Fitting



1007-118



1007-122



1007-111



1007-110



1007-112

Air Hoses – Page 3 of 3



1007-203



1007-218

Part Number	Description
1007-203	48" DISS to DISS Handnut Straight
1007-218	48" DISS to DISS with 90° Fitting
1007-323	48" DISS Straight to DISS Handnut with 90° Fitting
1007-210	48" DISS to Ohmeda Style Quick Connect with 90° Fitting
1007-211	48" DISS to Chemetron Style Quick Connect with 90° Fitting
1007-212	48" DISS to Puritan Style Quick Connect with 90° Fitting



1007-323



1007-211



1007-210



1007-212

Vacuum Gas Blocks – Page 1 of 2

Part Number	Description
1115-001	1 - 1/8" NPT Front
1115-002	1 DISS Front
1115-003	1 Ohmeda Quick Connect Front
1115-004	1 Chemetron Quick Connect Front
1115-005	1 Puritan Quick Connect Front



1115-001



1115-002



1115-004



1115-003



1115-005

Vacuum Gas Blocks – Page 2 of 2

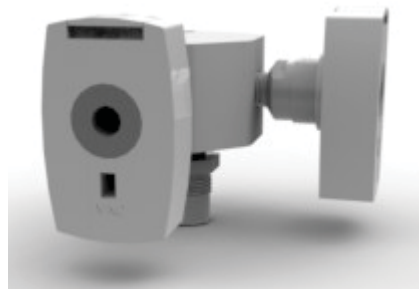


1215-001

Part Number	Description
1215-001	2 – 1/8" NPT Front
1215-002	2 DISS Front
1215-003	2 Ohmeda Quick Connect Front
1215-004	2 Chemetron Quick Connect Front
1215-005	2 Puritan Quick Connect Front



1215-002



1215-004



1215-003



1215-005

Vacuum Wall Outlet Splitter Blocks

Part Number	Description
1006-018	DISS to 2 DISS Outlets
1006-012	Chemetron Quick Connect to 2 DISS Outlets
1006-011	Ohmeda Quick Connect to 2 DISS Outlets
1006-020	Splitter Block, Vacuum, Puritan QC to 2 DISS Outlets



1006-018



1006-011



1006-012



1006-020

Vacuum Hoses – Page 1 of 3



1007-002



1007-302



1007-007

Part Number	Description
1007-002	24" DISS to DISS Handnut Straight
1007-302	24" DISS Straight to DISS Handnut with 90° Fitting
1007-007	24" DISS to Ohmeda Style Quick Connect with 90° Fitting
1007-008	24" DISS to Chemetron Style Quick Connect with 90° Fitting
1007-009	24" DISS to Puritan Style Quick Connect with 90° Fitting



1007-008



1007-009

Vacuum Hoses – Page 2 of 3



1007-102

Part Number	Description
1007-102	36" DISS to DISS Handnut Straight
1007-312	36" DISS Straight to DISS Handnut with 90° Fitting
1007-119	36" DISS to DISS with 90° Fitting
1007-123	36" DISS to DISS Straight
1007-107	36" DISS to Ohmeda Style Quick Connect with 90° Fitting
1007-108	36" DISS to Chemetron Style Quick Connect with 90° Fitting
1007-109	36" DISS to Puritan Style Quick Connect with 90° Fitting



1007-312



1007-123



1007-108



1007-119



1007-107



1007-109

Vacuum Hoses – Page 3 of 3



1007-219



1007-322

Part Number	Description
1007-219	48" DISS to DISS with 90° Fitting
1007-322	48" DISS Straight to DISS Handnut with 90° Fitting
1007-202	48" DISS to DISS Handnut Straight
1007-207	48" DISS to Ohmeda Style Quick Connect with 90° Fitting
1007-208	48" DISS to Chemetron Style Quick Connect with 90° Fitting
1007-209	48" DISS to Puritan Style Quick Connect with 90° Fitting



1007-202



1007-208



1007-207



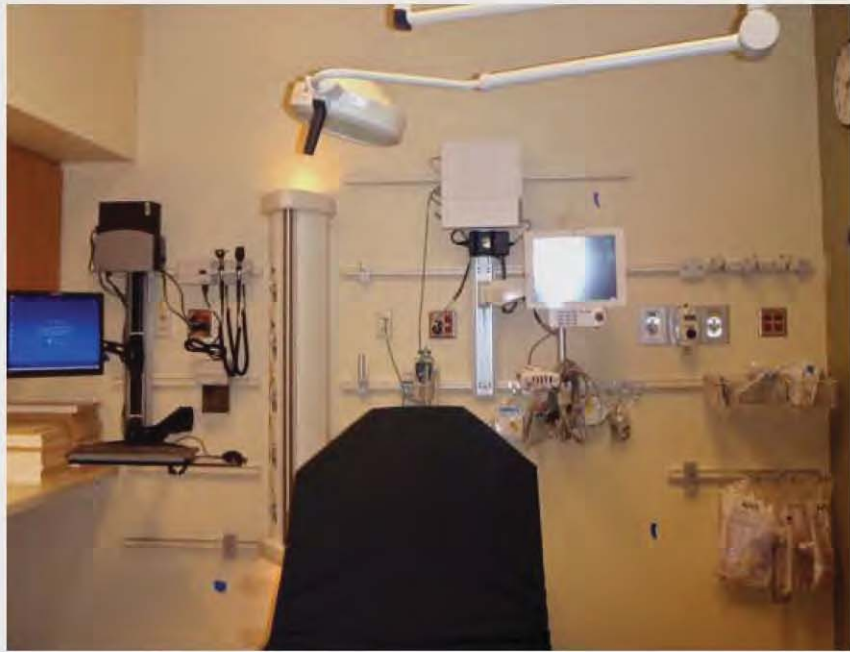
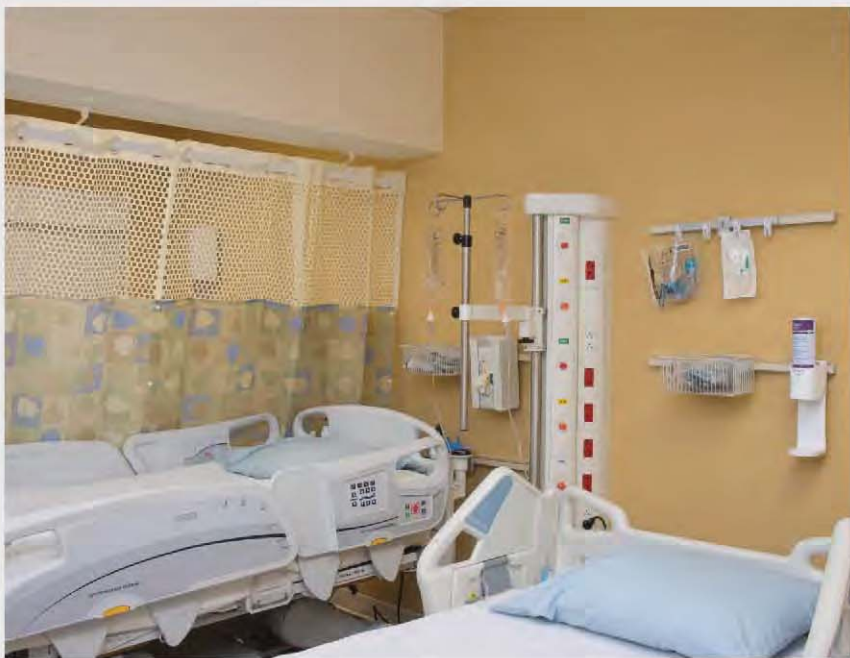
1007-209

Headwalls & Gas Rails



- Wall mounted systems distribute electrical services, medical gases and vacuum
- Single connection point from the wall for utility services which are then distributed throughout the unit
- User specified location of electrical and gas services during installation
- Integrated equipment management via rails and poles
- Staff can easily move and reposition equipment to better meet the needs of the patient while keeping the floor clutter free
- Designed to allow for future expansion

Matrixx – M™



The Nexxspan Matrixx–M™ vertical headwall and equipment management system is the optimal integration of form and function.

Configuration Flexibility

The Matrixx-M™ is available in a single or dual tower, left or right-handed configuration to meet the needs of a variety of departments including critical care, emergency or trauma. The facility can also configure the location of connections prior to installation.

Equipment Management

The system has a wide range of equipment management capabilities, including a 38 mm pole for mounting of monitors and infusion pumps, as well as the Nexxspan™ Equipment Rail, for support of clinical tools such as baskets, clips and various hangers.

Ergonomically Appropriate

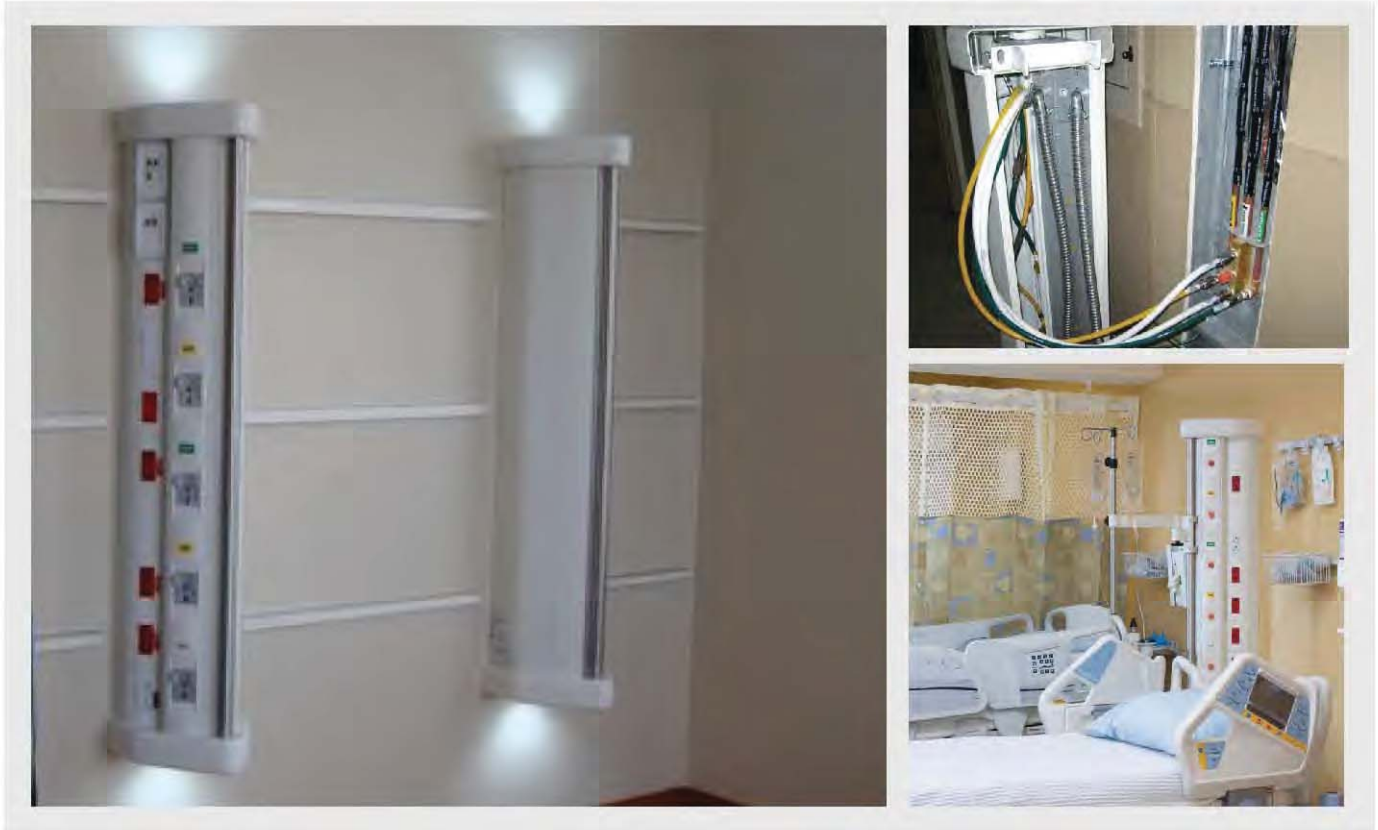
The essential services delivered by the Matrixx-M™ are custom configured to meet individual demands. The deployment of outlets remains in a 48" range of motion, consistent with ergonomic recommendations.

Improved Workflow

The flexible design of the Matrixx-M™ allows the clinical staff to position and reposition equipment where needed. This design provides easy access to patients and helps keep floor space clear to promote a safer, more efficient work environment.



Matrixx – M™



Clean Look, Reduces Infection Control Risks

The Nexspan™ Matrixx-M™ is designed from the ground up with infection control in mind. Smooth, seamless lines, rear mounted service positions and new gas outlet covers virtually eliminates screw holes and dirt collection opportunity. Clean lines, easy to disinfect and reduced risk of infection-spreading germs getting caught in hard to clean spots, help make the Matrixx-M™ the “cleanest” architectural product available today.

Patients in bed only see the clean exterior of the headwall, as the service panels are located away from their visual line of sight.

Integrated Lighting and Sound Control

The unique design and engineering of the Nexspan™ Matrixx-M™ deliberately deflects sound away from the center line of the patient care area. Unlike flat panel systems, which only bounce sound back to the patient, the shape of the Matrixx-M™ breaks up the linear travel of sound waves to soften the environmental noise.

Fully dimmable “up” and “down” lighting of the Matrixx-M™ gives the bedside team the ability to control lighting to best meet individual patient criteria. These lights can be switched from either the unit, or a remote location.

Equipment rail and accessories further enhance the ability of staff to ensure a clutter free work and family environment.

Future Proof the Facility

In wall rough-ins provide ease of single point service connections as well as future expansion capabilities. Headwalls can be added without gas certification or construction costs, as essential services are added via hose connections and simple conduit. All certifications take place at the time of initial construction. Individual outlets on the headwall are also easily serviced or even replaced without shutting zone valves off.



Medical Gas Rail



Gas and power distribution with integral Nexxspan™ equipment management and optional lighting.

The Nexxspan™ Medical Gas Rail is a surface mounted extruded aluminum gas and electric service delivery system designed to optimize flexibility, expandability and adaptability.

Component Based

- Equipment Rail, Gas and Electrical Components are independent and can be applied to meet specific needs.

Prepared for the Future

- Adapters allow future equipment to be attached to the rail reducing obsolescence.
- Future gas service expansion and additions will not need lengthy construction or gas recertification.

Flexible & Efficient

- Integrated equipment management rail system.
- Component based design to meet very specific user demands.
- Supported by hundreds of rail accessories and adapters.

Eliminate Life Cycle Costs

- Non-invasive expansion of medical gas station outlets as needed.
- With an initial investment in the Medical Gas Rail, you are free to spend resources on more pressing priorities in your hospital.



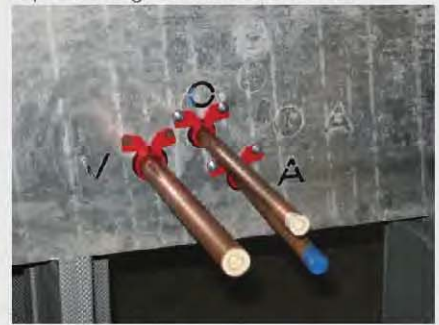
U.S. Patent - 7.857.354, 7.770.934



Medical Gas Rail



Conventional gas piping requires multiple connections as seen by blue tape leading to increased costs.



Medical Gas Rail piping requires only three connections.

Reduces Construction Costs

- The Nexxspan™ Medical Gas Rail reduces the cost of renovation and new construction.
- Shortens medical gas installation time.
- Eliminates up to 90% of medical gas pipe so overall project time can be drastically shortened.

Reduces Future Risk

- Nearly eliminates behind the wall gas pipes.

Reduce life cycle costs, shorten time of construction, and be prepared for future expansion all with one product that offers flexible equipment management — the components of the Nexxspan™ Medical Gas Rail System.

Reduces Maintenance Costs

- Life cycle maintenance costs are reduced to a fraction of what conventional outlets cost to maintain.
- Single point connection for all services.
- Instant gas upgrade to meet room designation and C.O.N. changes.

Expandable

- The Nexxspan™ Medical Gas Rail provides safe and immediate expansion of medical gas delivery outlets.
- By mounting gas block accessories to the rail, multiplication/relocation is achieved with no added weight burden on the outlet itself.



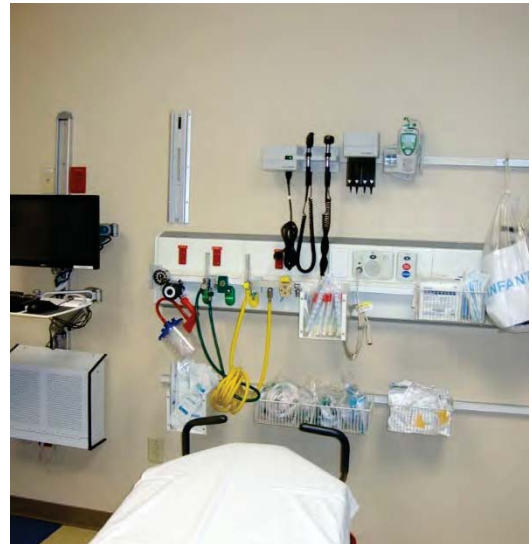
Before and After

All Children's Hospital St. Petersburg, FL

*Before Nexspan
Equipment Rails*



*After Nexspan Medical Gas
& Equipment Rails Installed*



Headwall Installs



Headwall Installs



Headwall Installs



Headwall Installs



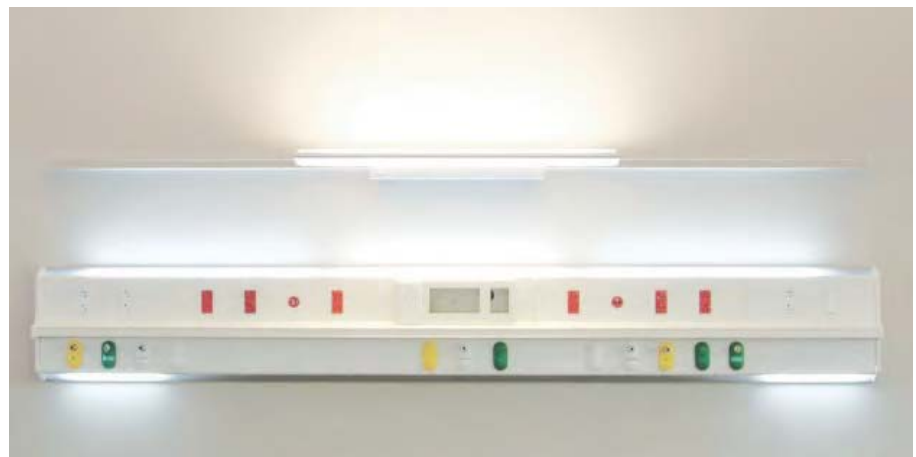
Matrixx-M Vertical Headwall System



1024-XXX-M

Part Number	Description
1024-XXX-M	Matrixx-M Vertical Headwall <ul style="list-style-type: none"> - Available in single or dual tower configurations - Custom services per signed submittal
1023-XXX	Medical Gas Rail Horizontal Headwall <ul style="list-style-type: none"> - Custom services per signed submittal

Medical Gas Rail Horizontal Headwall System



1023-XXX