

Equipment Rails, Headwalls & Accessories

For All Clinical Environments



Table of Contents

<i>Clinical Organization</i>	<i>4</i>
<i>Rails</i>	<i>6</i>
<i>Measuring for Mounting Kit</i>	<i>16</i>
<i>Adapters</i>	<i>18</i>
<i>Diagnostic Equipment</i>	<i>21</i>
<i>Infection Control</i>	<i>29</i>
<i>Soap & Sanitizer</i>	<i>32</i>
<i>Wipes</i>	<i>39</i>
<i>Towel Dispensers</i>	<i>41</i>
<i>Gloves</i>	<i>53</i>
<i>PPE Dispensers</i>	<i>62</i>
<i>Sharps</i>	<i>68</i>
<i>Baskets & Bins</i>	<i>78</i>
<i>Clips & Hooks</i>	<i>82</i>
<i>Shelves</i>	<i>86</i>

Table of Contents

<i>Additional Accessories</i>	<i>91</i>
<i>Channel Mounts</i>	<i>98</i>
<i>Work Surfaces</i>	<i>102</i>
<i>Infusion Management</i>	<i>107</i>
<i>Mobile Solutions</i>	<i>111</i>
<i>Gas Management</i>	<i>115</i>
<i>Headwalls & Gas Rails</i>	<i>142</i>
<i>Reference List</i>	<i>154</i>
<i>Index</i>	<i>156</i>

Clinical Organization



- Provides user-defined equipment organization with limited cost and facility disruption.
- Mount accessories to equipment rails with snap-action adapters.
- Easily exchange and relocate devices to meet clinical and patient needs.
- Adaptable and expandable for future needs.
- Helps keep equipment off the floor for a better work environment.
- Reduce the number of facility wall repairs by attaching devices to the rail rather than directly to the wall.
- Relocate or exchange devices with minimal cost and disruption to the facility.

Optimizing Clinical Spaces



Rails



- Fairfield style rail.
- Includes end caps and decorative inlay which is available in a variety of colors.
- Supports medical equipment using snap action adapters to keep floor and cabinet space clear.
- When mounted according to manufacturer's specifications, heavy duty rail has a 62 pound weight capacity per 16" centers. The one foot rail has a 25 pound direct weight capacity.
- Rails are made of aluminum with anodized finish.
- Flexible system is expandable and improves staff productivity and workflow.
- No exposed screw holes.

Heavy Duty Equipment Rails



1002-012 – 1002-120
Rail comes standard with light gray inlay and white end caps.



1002-P01



1002-P02

Part Number	Description
1002-012	1 Foot Heavy Duty Rail
1002-024	2 Foot Heavy Duty Rail
1002-036	3 Foot Heavy Duty Rail
1002-048	4 Foot Heavy Duty Rail
1002-060	5 Foot Heavy Duty Rail
1002-072	6 Foot Heavy Duty Rail
1002-084	7 Foot Heavy Duty Rail
1002-096	8 Foot Heavy Duty Rail
1002-108	9 Foot Heavy Duty Rail
1002-120	10 Foot Heavy Duty Rail
1002-P01	End Cap, Hard Plastic, White
1002-P02	Joiner
1002-P04	Inlay 1' – Light gray is standard. Inlay may be matched to a Wilson Art color. Additional charges may apply.

Mounting Hardware

Part Number	Description
1004-P01	Metal Studs and Backer Hardware, Flush Mount, Heavy and Light Duty Rail – Qty. 1
1004-P02	Drywall Hardware, Flush Mount for Heavy and Light Duty Rail – Qty. 1
1004-P03	Masonry Hardware, Flush Mount for Heavy and Light Duty Rail – Qty. 1



1004-P01



1004-P02



1004-P03



1004-P04



1004-P05

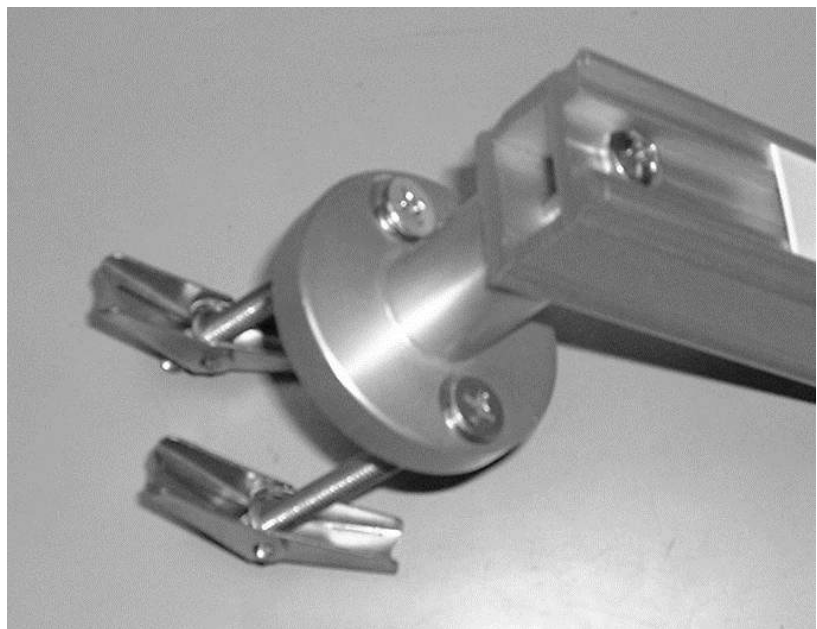


1004-P06



1004-P08

Part Number	Description
1004-P04	Metal Studs or Backer Hardware, Stand-Off for Heavy Duty Rail – Qty. 1
1004-P05	Drywall Hardware, Stand-Off for Heavy Duty Rail – Qty. 1
1004-P06	Masonry Hardware, Stand-Off for Heavy Duty Rail – Qty. 1
1004-P07 (not shown)	Metal Studs or Backer Hardware, Stand-Off for Light Duty Rail – Qty. 1
1004-P08	Drywall Hardware, Stand-Off for Light Duty Rail – Qty. 1
1004-P09 (not shown)	Masonry Hardware, Stand-Off for Light Duty Rail – Qty. 1



Stand Off Example

Rails & Accessories



The bridge between the supply cart and the patient — the ideal tool to bring flexibility and organization to the clinical environment.



Using Rails and Accessories facility-wide for equipment management helps reduce and control inventory, simplifies swap out of technology and minimizes costs for maintenance and repair.

Convenient & Flexible

- Total freedom of equipment placement.
- Reduces inventory of bedside supplies.

Easy Expansion

- Simple medical gas expansion.
- Increase rail capacity to meet future needs by simply adding additional rails.

Improves Process

- Rearrange instantly without tools.
- Store only those supplies needed at each bedside.
- Continuity of supply management throughout each department.
- Optimum work flow achieved by option to personalize work space.



Rails & Accessories



Acuity Adaptable

- Universal use throughout the hospital ensures an acuity adaptable environment.
- Ease of installation with minimal interruption.
- Patient rooms can be reconfigured quickly to meet evolving needs.

Infection Control

- Eliminate patching and painting drywall by mounting infection control devices on the rail.
- Any brand of sharps, soap or sanitizer can be mounted on the Nexxspan™ Rail.

The Nexxspan™ Rail & Accessory system and its predecessor, The Fairfield® Rail System, have been installed in thousands of hospitals since the 1970s and continues to be the *Gold Standard* Equipment Management Rail System today.

Monitor Management

- Brackets, shelves, and articulated arms help users to place monitors where they can be seen and reached.

Infusion Management

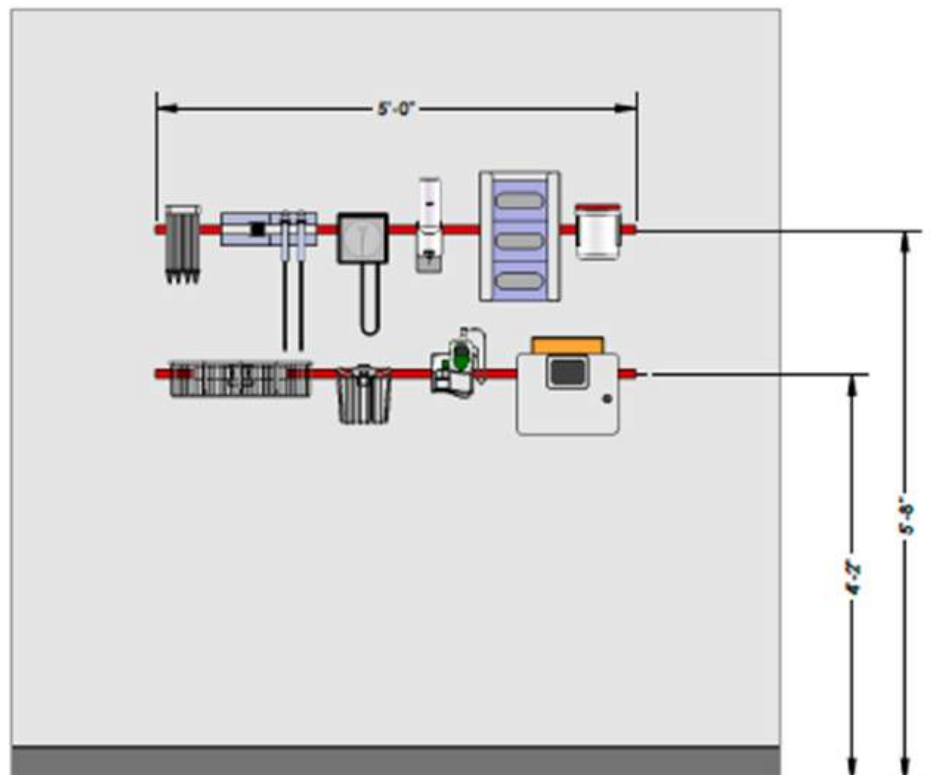
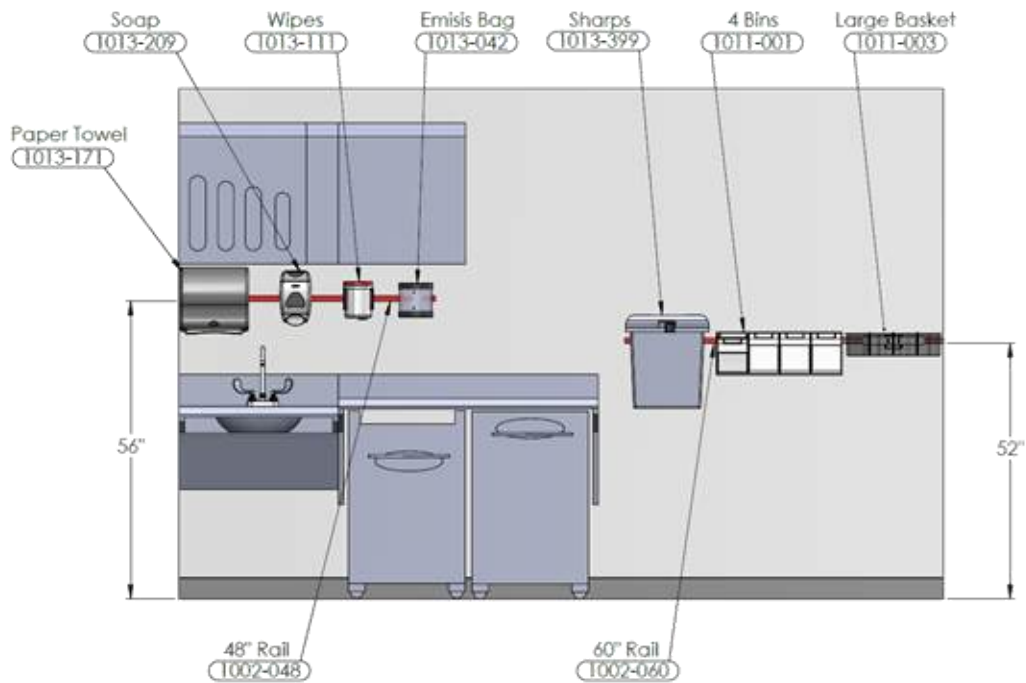
- These accessories are fully rail-compatible and permit IV poles and IV hangers to be placed almost anywhere near a patient.

Supply Management

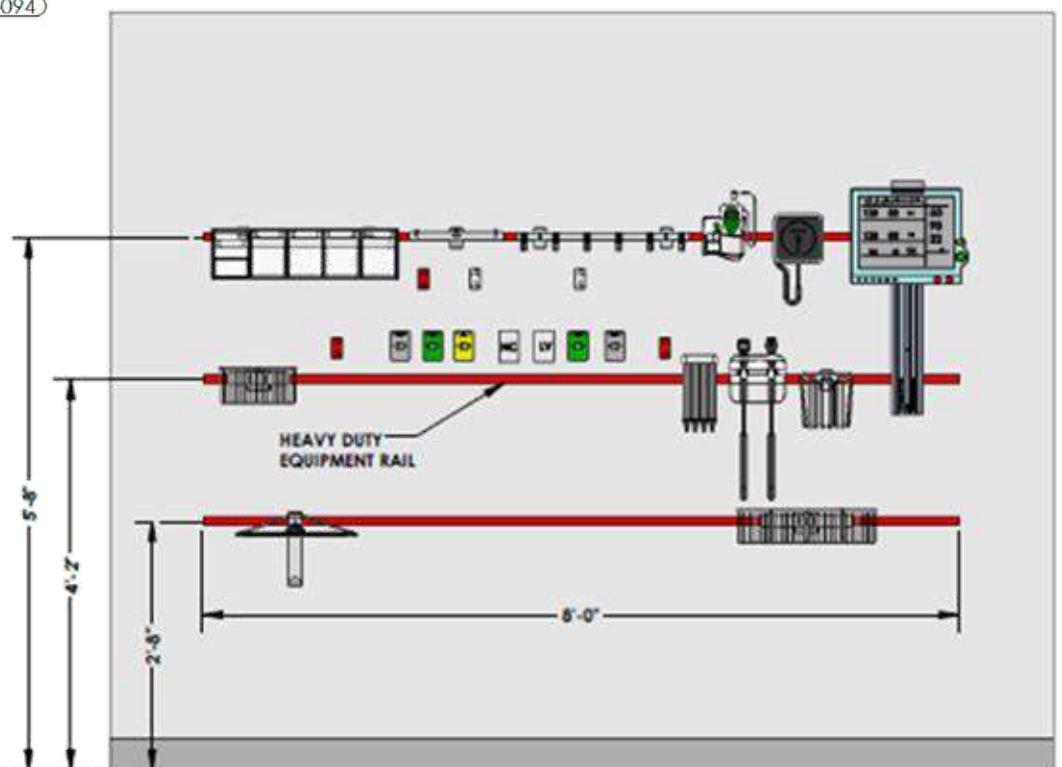
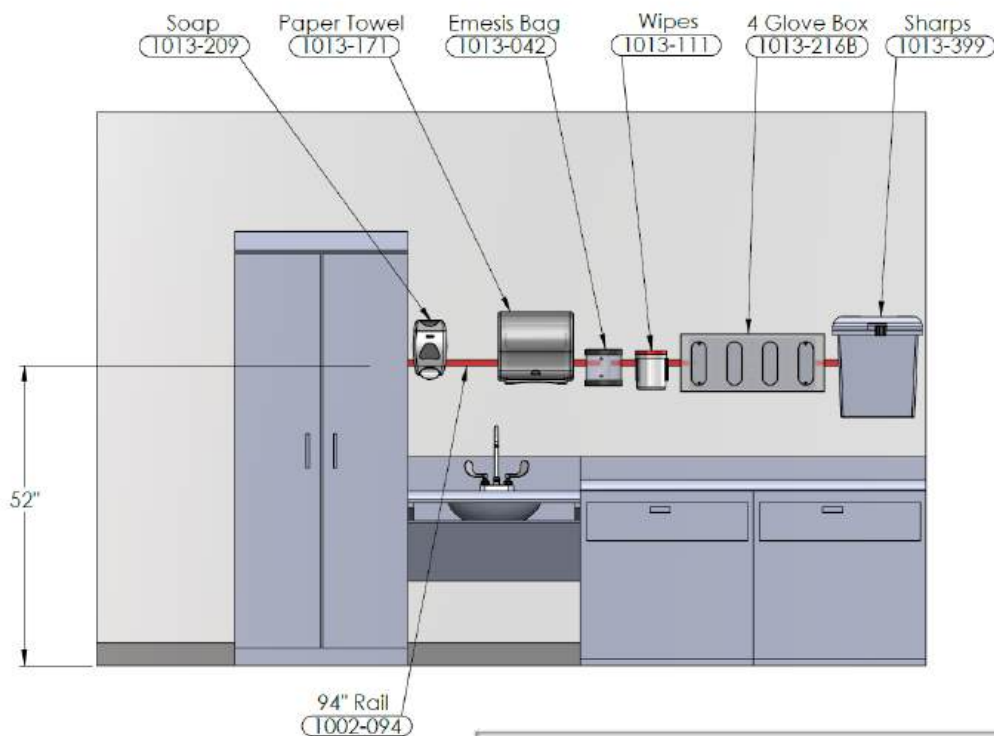
- Storage and presentation of diagnostic tools, disposables, gloves, supplies and other frequently used items is always a problem in crowded patient rooms.
- Our assortment of shelves, baskets and specialty containers keep the patient area organized and neat.



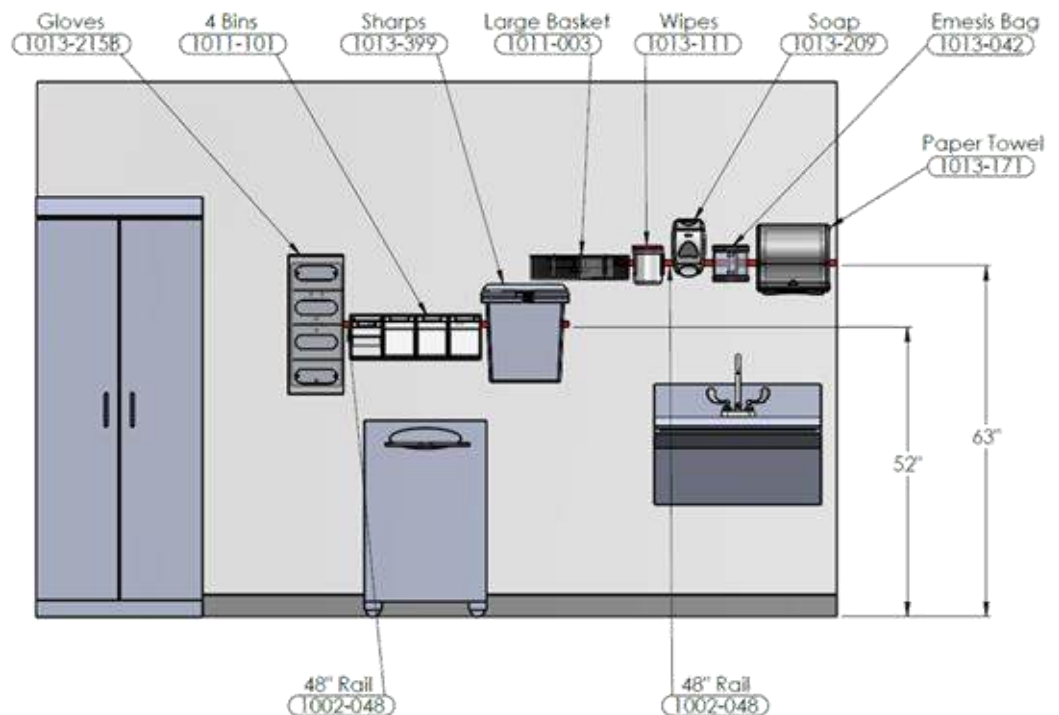
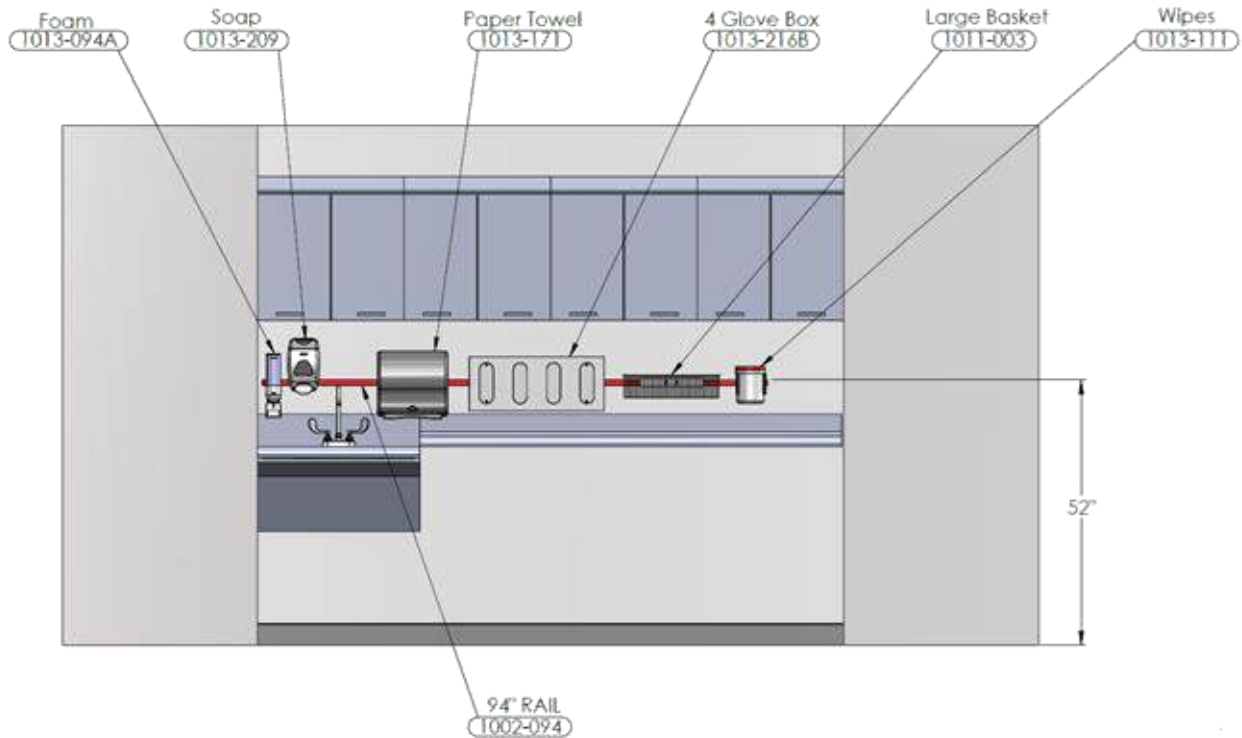
Sample Layouts



Sample Layouts



Sample Layouts



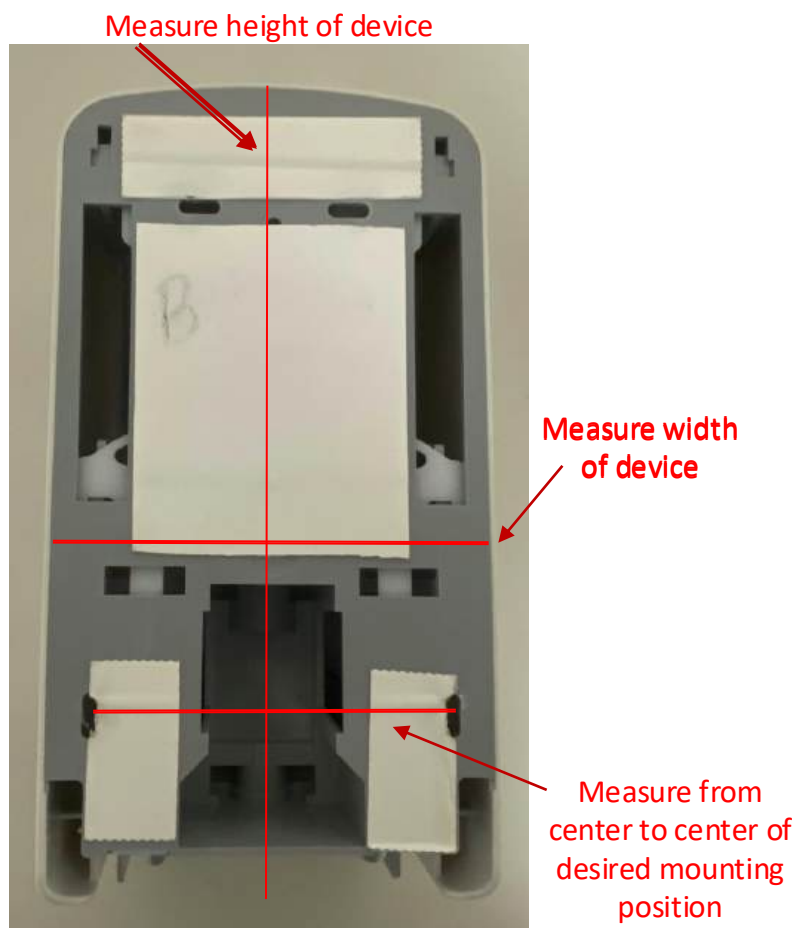
Equipment Rail Installs



Measuring for Mounting Kit – Soaps, Sanitizers

To help identify which mounting kit you need for your soap or sanitizer dispenser, please provide the following information:

- Make and model of the device.
- Overall dimensions including width and height.
- Measure center to center of desired mounting position
- Provide an image of the front and back of the device.
- Email to orders@Nexxspan.com for review and a quote.



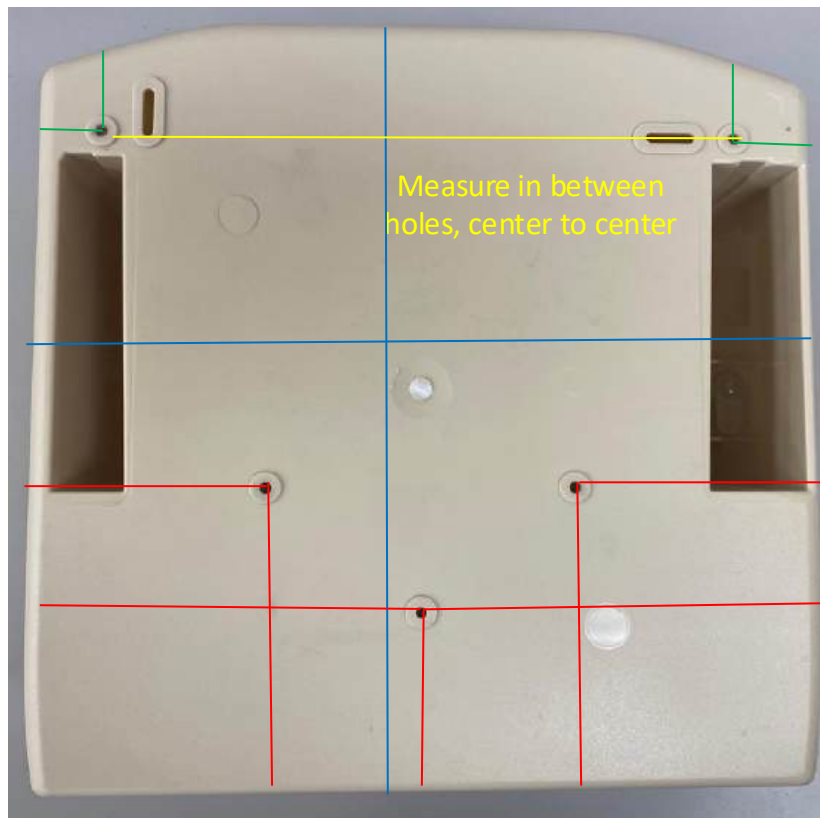
Measuring for Mounting Kit

To help identify which mounting kit you need for your third party device, please provide the following information:

- Make and model of the device
- Overall dimensions including width and height
- Identify the hole pattern on the back of the item.
- Measure from the top edge to the center of each hole.
- Measure from the bottom edge to the center of the lower holes., center to center
- Measure from the left and right edge to the center of each hole.
- Measure the distance in between holes, left to right and top to bottom.
- Provide an image of the front and back of the device.
- Email to orders@Nexxspan.com for review and a quote.

Measure from top of device
from bottom of device

Measure from edge to
the center of the screw
hole – horizontal and
vertical



Measure the width
of the device

Measure from bottom edge of
device to center of the holes.

Adapters



- Provides secure attachment of medical equipment to Nexxspan equipment rails.
- Snap on-off design allows easy repositioning of equipment.
- Simple Allen screw provides option for locking devices onto a rail.
- Adapters are made of aluminum with anodized finish.

Single Width Adapters

Part Number	Description
1001-000	Single Width, Blank
1001-001	Single Width, 2 Vertical Holes Drilled and Countersunk
1001-002	Single Width, 2 Horizontal Holes Drilled and Countersunk
1001-003	Single Width, 2 Vertical Holes Drilled and Tapped 10/32"
1001-004	Single Width, 2 Horizontal Holes Drilled and Tapped 10/32"
1001-005	Single Width, 1 Hole Drilled and Countersunk
1001-006	Single Width, 1 Hole Drilled and Tapped 10/32"


1001-000

1001-001

1001-002

1001-003

1001-004

1001-005

1001-006

Double Width Adapters

Part Number	Description
1001-010	Double Width, 2 Vertical Holes Drilled and Countersunk
1001-011	Double Width, 4 Holes Drilled and Countersunk
1001-012	Double Width, 2 Horizontal Holes Drilled and Countersunk
1001-013	Double Width, 2 Horizontal Holes Drilled and Tapped for M6 Screw
1001-014	Double Width, 4 Holes Drilled and Tapped 10/32"



1001-010



1001-011



1001-012

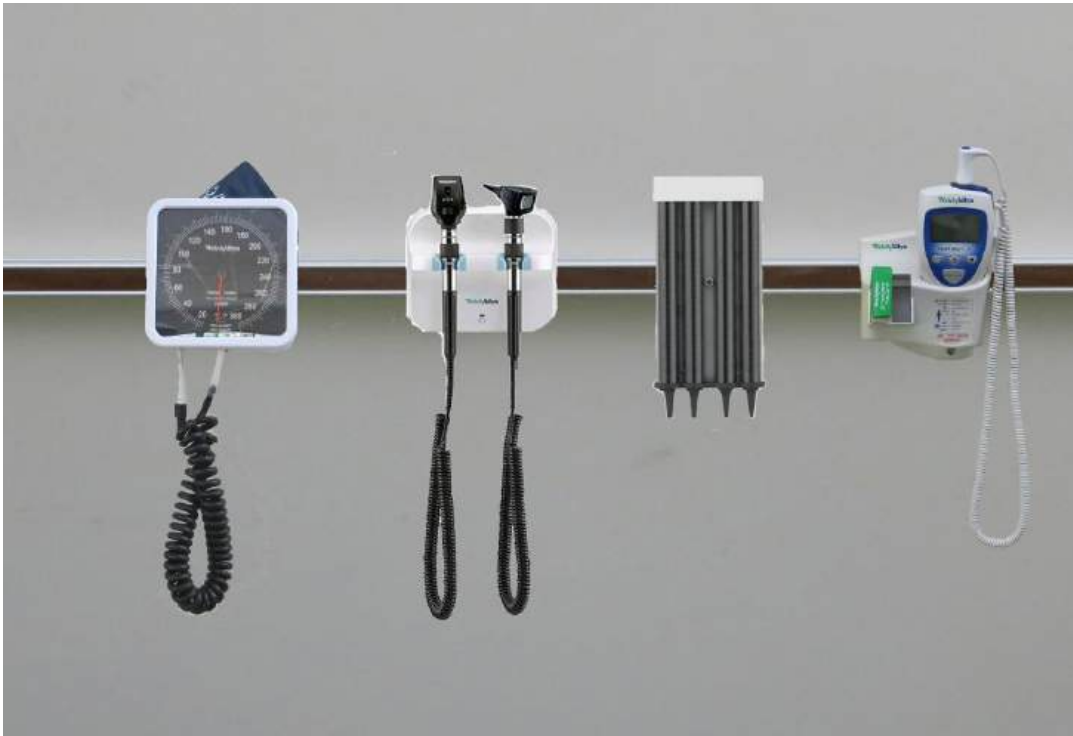


1001-013



1001-014

Diagnostic Equipment



- Easy conversion of diagnostic equipment to Nexxspan's Fairfield style rail.
- Mounts diagnostic equipment to rail using snap action adapter, with positive snap attachment lock feature.
- Snap action adapter has tamper proof secured lock feature via Allen screws allowing accessory to be tightly locked to equipment rail.
- Adapter material is extruded aluminum with anodized finish.

Mounting Kit for Dinamap NIBP Monitor

Part Number: 1010-009

*Monitor not included



Mounting Kit for Blood Pressure Cuff Basket

Part Number: 1012-P04

*Bar measures 3" wide by 1" high. Basket not included



Example of blood pressure
cuff basket

Mounting Kit for Welch Allyn Blood Pressure Sphygmomanometer (Model: Tycos-Aneroid 509)

Part Number: 1012-P02

*Device not included



Mounting Kit for Welch Allyn 767 Series Aneroid Manometer (Model: Tycos-Aneroid 767)

Part Number: 1012-P05

*Bar measures 5" wide by 1" high.
Device not included.



Mounting Kit for Welch Allyn 777 Aneroid Manometer (Model: Tycos-Aneroid 777)

Part Number: 1012-P55

*Bar measures 5" wide by 1" high.
Device not included



Mounting Kit for Welch Allyn Sure Temp Oral and Rectal Thermometer

Part Number: 1013-045

*Plate measures 5" wide by 4" high.
Device not included



Mounting Kit for Speculum Container Welch Allyn

Part Number: 1013-012

*Plate measures 2.75" wide by 4.5" high.
Container not included



Mounting Kit for Speculum Container, Welch Allyn 767 and 777 Series (Model: Tycos-Aneroid 767 & 777)

Part Number: 1013-512

*Plate measures 2.75" wide by 4.5" high.
Container not included



Mounting Kit for Welch Allyn 767 Ophthalmoscope Holder (Model: Tycos-Aneroid 767)

Part Number: 1013-011

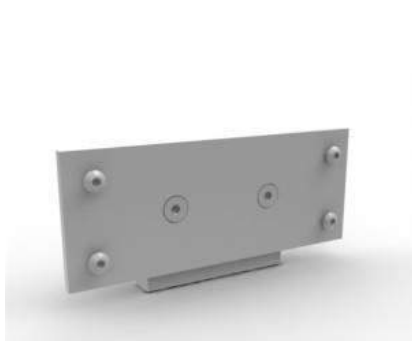
*Plate measures 6" wide by 2.38" high.
Device not included.



Mounting Kit for Ophthalmoscope, Welch Allyn 777 Series (Model: Tycos-Aneroid 777)

Part Number: 1013-511

*Plate measures 6" wide by 3.38" high.
Device not included.



Mounting Kit for Exergen Temporal Thermometer (Model: 134201)

Part Number: 1013-044

*Device not included.



Mounting Kit for Exergen Temporal Thermometer (Model: 134305 & 134306)

Part Number: 1013-056

*Device not included



Mounting Kit for Universal Manometer

Part Number: 1013-016

*Bracket measures 3.5" wide by 6" high.
Meter not included.



Mounting Kit for Magnahelic Gauge

Part Number: 1013-018

*Plate measures 4" wide by 1.5" high.
Gauge not included



Infection Control



- Mount infection control items exactly where you need them without creating holes in the wall.
- Easily relocate or exchange dispensers without the need of wall repair.
- Adapters available for a wide range of third party infection control devices.
- Mounts to Nexxspan Equipment Management Rail, Fairfield “style” using snap action adapter, with positive snap attachment lock feature.
- Snap action adapter has tamper proof secured lock feature via Allen screws allowing accessory to be tightly locked to equipment rail.
- Adapter material is extruded aluminum with anodized finish.

Infection Control Applications



Reduce Obsolescence -
Never again patch holes in your dry wall by using the Nexxspan™ Rail and adapters for your infection control tools.



Heightened awareness of infection control necessitates positioning infection control application products in immediate patient care areas.

In the environment of ever changing contracts, the need to "change out" various manufacturers is increased. By mounting tools for infection control on the wall with Nexxspan™ Rails and adapters, the need for future drywall patching and painting are virtually eliminated.

Convenient

- Attach anything anywhere.
- Relocate devices as needed, by the staff.

Expandable

- Add other accessories to the rail to further support efficient clinical practice.

Adaptable

- Technology and contract vendors change. Rail can adapt to all new devices.

Reduce Costs

- Never patch drywall due to contract changes again.
- Swap adapters to replace broken dispensers rather than patch holes.

Flexible

- Locate devices for Infection Control application anywhere along the rail.

Efficient

- Reduce installation time and cost when installing new dispensers.
- Mount any brand of dispenser or device on the rail.



Infection Control Applications



Nexxspan™ Equipment Rails can drastically reduce the life cycle costs of maintaining your facility.



Eliminate Drywall Repairs

Dispensers break; contracts change. Nexxspan™ Rail and adapters will virtually eliminate the need to ever repair drywall again. Optimize your resources to other priorities, not to patching and painting holes.

Mount Infection Control Where It's Needed

The Nexxspan™ Equipment Rail allows you to bring infection control devices to where you practice. Be it on a wall, by the sink or on a mobile supply cart, proper practice is now possible without compromise.



Mounting Kit for Universal Soap, Lotion and Sanitizer

Part Number: 1013-209

*The universal mounting plate can be used for narrow and wide soap, sanitizer, and lotion. The mounting kit can be used to mount devices horizontally and vertically making it universal.

**Plate measures 4" wide by 5" high. Dispensers not included.



Plate rotated horizontally

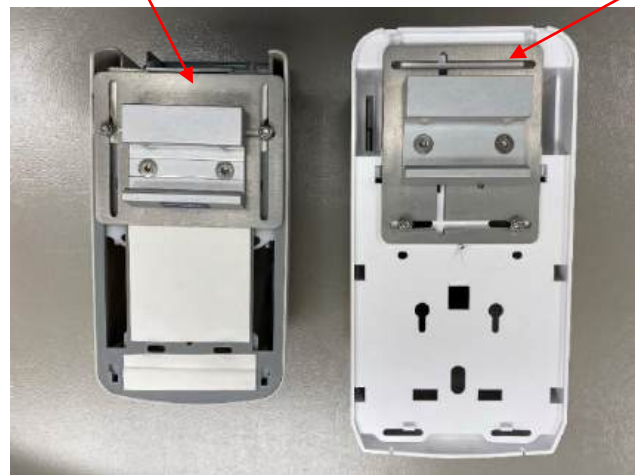


Plate rotated vertically



Mounting Kit for Ecolab Soap, Sanitizer and Wipes

*Dispensers not included.

Part Number	Adapters Available For:
1013-089	Ecolab Endure Soap Dispenser Model# 92723188, 750 ml
1013-090	Ecolab Aseptic Wipes (requires Ecolab holder)
1013-091	Ecolab Bullseye Soap Dispenser, Model# 92022111
1013-092	Ecolab Hand Hygiene Soap Dispenser



1013-089

Plate measures
4" wide x 3.5" high



1013-091

1013-092

Plate measures
4" wide x 5" high

If you do not see your dispenser listed, contact Nexxspan Healthcare for a complete list of available adapters.

Mounting Kit for Ecolab Soap, Sanitizer and Wipes

*Dispensers not included.

Part Number	Adapters Available For:
1013-093	Ecolab 7 oz. Quick Care Sanitizer Foam
1013-094	Ecolab 15 oz. Quick Care Sanitizer Foam
1013-094A	Ecolab 9 oz. and 15 oz. Quick Care Foam with Drip Pan



*Dispenser and holder
not included



**1013-093
1013-094**

**Plate measures 2.25"
wide x 2.5" high**



*Dispenser and holder
not included



1013-094A

**Plate measures 2.25"
wide x 7.5" high**

If you do not see your dispenser listed, contact Nexxspan Healthcare for a complete list of available adapters.

Mounting Kit for Steris 9 ounce All Care (Model: 6399-36)

Part Number: 1018-S03

*Plate measures 2.25" w x 2.5" h.
Dispenser not included.



Mounting Kit for Steris Multi Use Hand Pump Dispenser (Model: 1307-Q5 with Wall Bracket 1308-Q7)

Part Number: 1018-S04

*Dispenser not included.



Mounting Kit for Medline Push Dispenser (Model: LX10PUSH, MSC097062)

Part Number: 1013-059

*Dispenser not included.



Mounting Kit for Medline 8 ounce Epi-Clenz (Model: MSC097040)

Part Number: 1013-060

*Plate measures 2.25" wide x 2.5" high.
Dispenser not included.



Mounting Kit for Huntington Dispensers

*Dispensers not included

Part Number	Adapters Available For:
1013-080	Huntington Hand Pump for Endure 18 oz./ 540 ml, Model # 61439813 (also for Ecolab Disposacare)
1013-102	Huntington Hand Pump for Endure 1000 ml, model # 9722107 (also for Ecolab Disposacare)



Mounting Kit for Georgia Pacific EnMotion Touchless Soap/Sanitizer Dispenser (Models: 52052/52053/52054)

Part Number: 1013-071

*Plate measures 6" wide x 8" high.
Dispenser not included.



If you do not see your dispenser listed, contact Nexxspan Healthcare for a complete list of available adapters

Mounting Kit 3M Avagard Antiseptic Bracket (Model: 9200, 9216)

Part Number: 1013-471

*Bracket not included



Mounting Kit for 3M Avagard D Hand Antiseptic with Moisturizers

Part Number: 1013-055

*Plate measures 2.8" wide x 6" high.
Dispenser not included.



Universal Wipes Holder with Rail Mount

Part Number: 1013-111

*Wipes not included



Mounting Kit for Cavicide Caviwipes Canister Wall Bracket

Part Number: 1013-095

*Plate measures 4" wide x 5" high.
Bracket and wipes not included.



Mounting Kit for PDI Sani Cloth Metal Holder (Model Q51510)

Part Number: 1013-050

Dispenser and wipes not included.



Mounting Kit for PDI San Bracket Wipes Box (Model P44210)

Part Number: 1013-183

*Bracket and dispenser not included



Large 10" x 12" Universal Bracket for 3 Gallon Paper Towel Dispensers/Sharps Dispensers/Hospital Dispensers

Part Number: 1013-211

*Plate measures 10" wide x 12" high.
Dispenser not included.



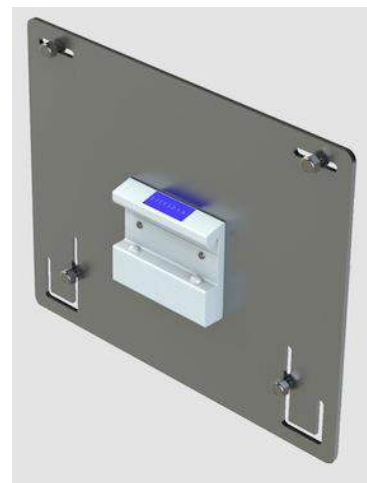
Works for a wide range of dispensers including:

- Georgia Pacific Cormatic Mechanical Roll Towel Dispenser (Model: HDS200B)
- Georgia Pacific enMotion Automated Touchless Towel Dispenser (Model: 59462)

Medium 8" x 10" Universal Bracket for Paper Towel Dispensers

Part Number: 1013-210

*Plate measures 10" wide x 8" high.
Dispenser not included.



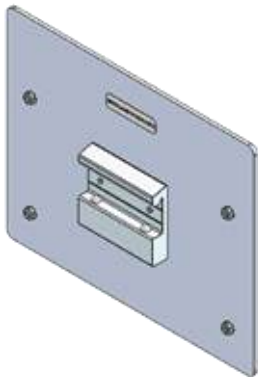
Works for a wide range of dispensers including:

- Georgia Pacific Combination C-Fold/Multifold/Big Fold Towel Dispenser (Model: 56665/01)
- Georgia Pacific enMotion Impulse 10 Automated Towel Dispenser

Mounting Kit for Bradley Multifold Stainless Towel Dispenser (Model: 251-15)

Part Number: 1013-339

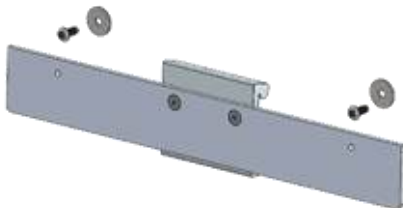
*Plate measures 10" wide by 8" high.
Dispenser not included.



Mounting Kit for Bradley Roll Paper Towel Dispenser (Model: 259)

Part Number: 1013-341

*Plate measures 13" wide by 1.75" high.
Dispenser not included.



Mounting Kit for Georgia Pacific enMotion Impulse 10 Automated Towel Dispenser (Model: 59488 , 59447, 59487)

Part Number: 1013-079

*Plate measures 10" wide x 8" high.
Dispenser not included.



Mounting Kit for Georgia Pacific enMotion Automated Touchless Towel Dispenser (Model: 59462)

Part Number: 1013-076

*Plate measures 10" wide x 12" high.
Dispenser not included.



Mounting Kit for Georgia Pacific Chrome/White Combination C-Fold Multifold Towel Dispenser (Model: 56620, 56601)

Part Number: 1013-170

*Plate measures 10" wide x 12" high.
Dispenser not included.



Mounting Kit for Georgia Pacific enMotion Impulse 8 Automated Towel Dispenser (Model: 59498 & 59498A)

Part Number: 1013-171

*Plate measures 10" wide x 8" high.
Dispenser not included.



Mounting Kit for Georgia Pacific enMotion Stainless, Recessed Automated Touchless Towel Dispenser (Model: 59466)

Part Number: 1013-172

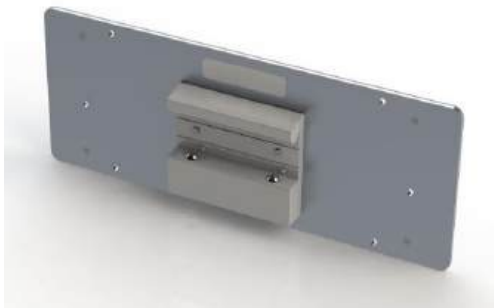
*Plate measures 10" wide x 12" high.
Dispenser not included.



Mounting Kit for Georgia Pacific Chrome Multifold Stainless Towel Dispenser (Model: 54720)

Part Number: 1013-173

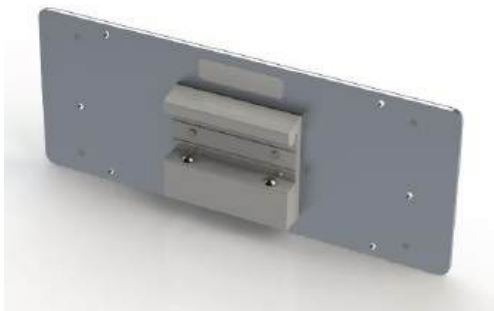
*Plate measures 10" wide x 4" high.
Dispenser not included.



Mounting Kit for Georgia Pacific Sofpull Towel Dispenser (Model: 58470, 58487)

Part Number: 1013-182

*Plate measures 10" wide x 4" high.
Dispenser not included.



Mounting Kit for Georgia Pacific Sofpull Junior Capacity Centerpull Towel Dispenser (Model: 58008)

Part Number: 1013-191

*Plate measures 4" wide x 8" high.
Dispenser not included.



Mounting Kit for Kimberly Clark Insight Compact Scottfold Towel Dispenser (Model: 09215, 09216, 09217, 09214)

Part Number: 1013-196

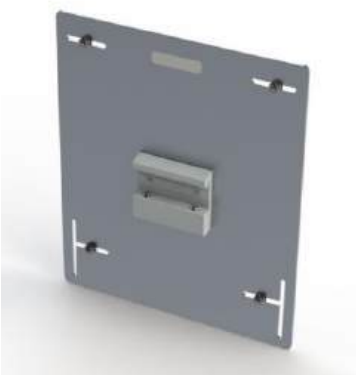
*Plate measures 6" wide x 8" high.
Dispenser not included.



Mounting Kit for Kimberly Clark Scottfold Towel Dispenser (Model: 09903, 09904)

Part Number: 1013-081

*Plate measures 10" wide x 12" high.
Dispenser not included.



Mounting Kit for Kimberly Clark In-Sight Sanitouch Hard Roll Towel Dispenser (Model: 09995, 09996)

Part Number: 1013-082

*Plate measures 10" wide x 12" high.
Dispenser not included.



Mounting Kit for Kimberly Clark Universal Windows Series Towel Dispenser (Model: 9905, 9906)

Part Number: 1013-085

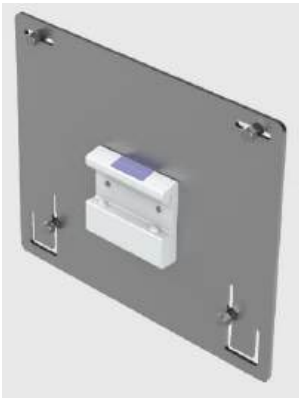
*Plate measures 10" wide x 12" high.
Dispenser not included.



Mounting Kit for Bobrick Stainless Steel Multifold Towel Dispenser (Model: 54720)

Part Number: 1013-174

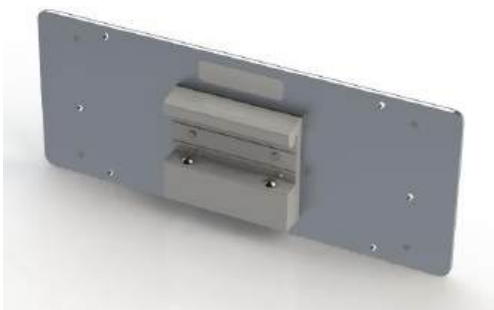
*Plate measures 10" wide x 8" high..
Dispenser not included.



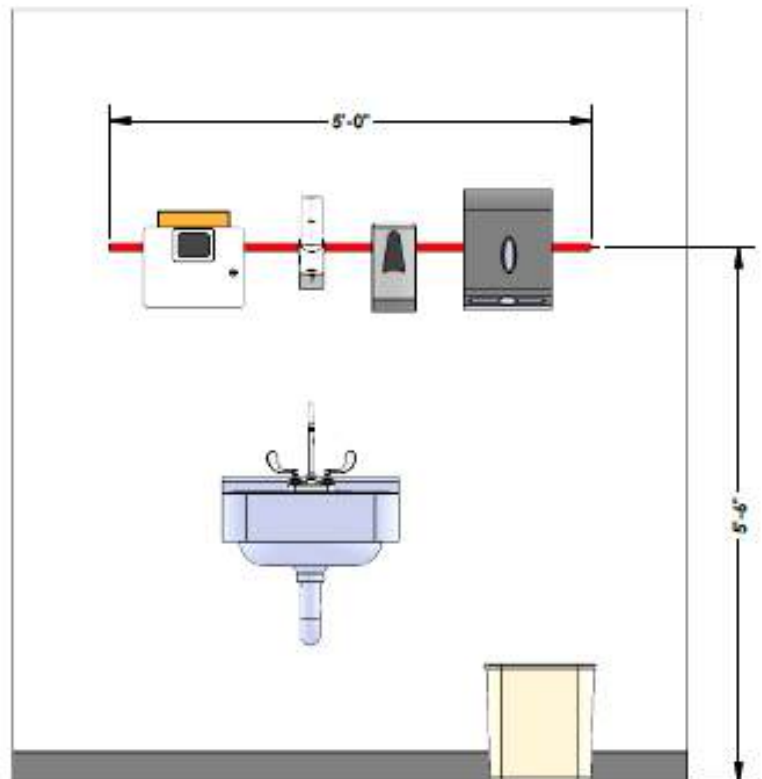
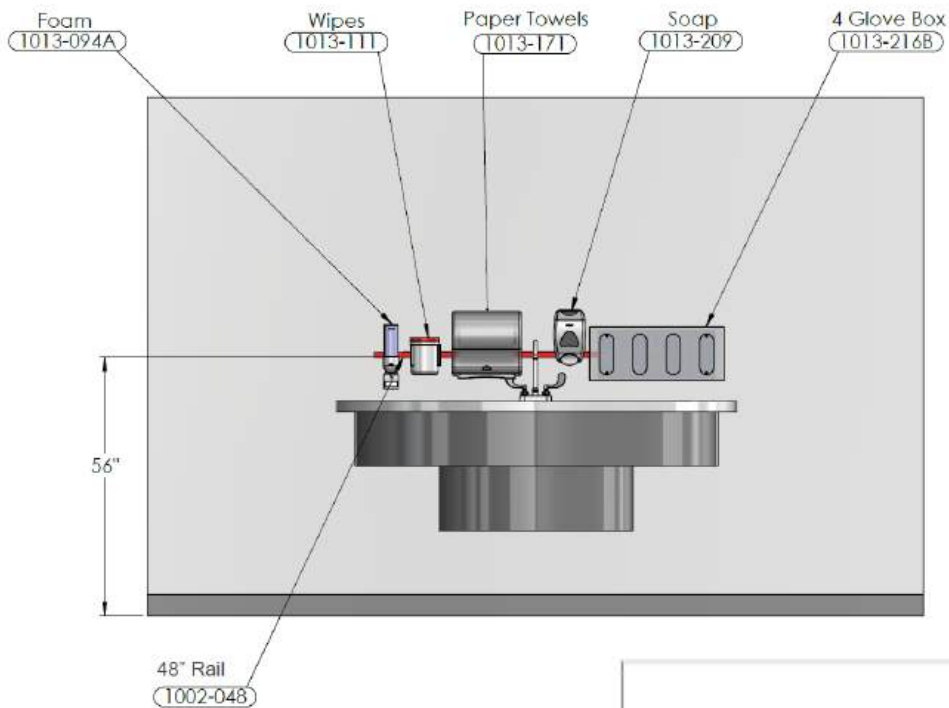
Mounting Kit for Bobrick Stainless Steel Multifold Towel Dispenser (Model: B-2621)

Part Number: 1013-221

*Plate measures 10" wide x 4" high..
Dispenser not included.



Sample Layouts – Infection Control



Infection Control Installs



Infection Control Installs



PPE – Gloves, Dispensers



- Mounts to Nexxspan Equipment Management Rail, Fairfield “style” using snap action adapter, with positive snap attachment lock feature.
- Snap action adapter has tamper proof secured lock feature via Allen screws allowing accessory to be tightly locked to equipment rail.
- Adapter material is extruded aluminum with anodized finish.

Nexxspan Glove Box Holder with Rail Mount

**Includes glove holder and rail mount*

Part Number	Adapters Available For:
1013-002	Single Glove Box Holder - Measures 6" wide x 11" long x 4" deep
1013-003	Two Glove Box Holder - Measures 6" wide x 18" long x 4" deep
1013-129	Three Glove Box Holder - Measures 10" wide x 16" long x 4" deep



1013-002



1013-003



1013-129

Northern Acrylics Glove Holder Mounting Kit

*Gloves not included.

Part Number	Adapters Available For:
1013-316B – Horizontal Rail Mount 1013-315B – Vertical Rail Mount	Northern Acrylics 3 Box Glove Holder and Mounting Kit, 1100-HV Series (Model: 1100-16875)
1013-215B – Vertical Rail Mount	Northern Acrylics 4 Box Glove Holder and Mounting Kit, 1100-HV Series (Model: 1100-2500)
1013-216B – Horizontal Rail Mount	Northern Acrylics 4 Box Glove Holder and Mounting Kit, 1100-HV Series (Model: 1100-2500)
1013-215	Northern Acrylics – Plate Only for 4 Box Glove Holder

1013-315B (Shown)

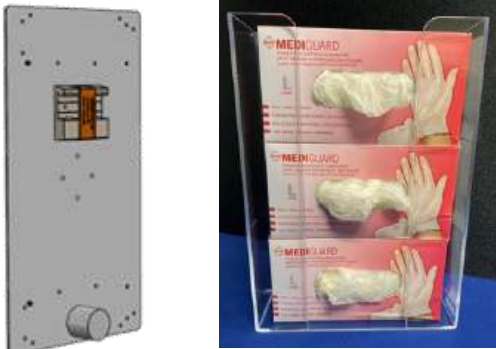


Plate measures 16"w by 9"h and can be used horizontally or vertically

1013-215B (Shown)

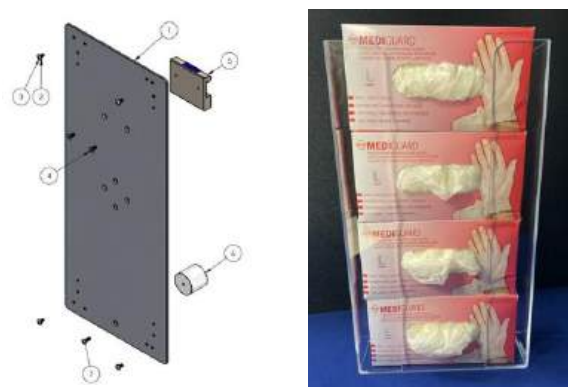


Plate measures 22"w by 9"h and can be used horizontally or vertically

If you do not see your glove holder listed, contact Nexspan Healthcare for a complete list of available adapters.

Bowman Glove Box Mounting Kit

*Glove box holder and gloves not included.

Part Number	Adapters Available For:
1013-132H 1013-132V	Bowman 3 Box Glove Holder for Vertical or Horizontal Mount (Model: GP-015)
1013-116	Bowman 3 Box Glove Holder Vertical Mount (Model: GS-123)
1013-117	Bowman 3 Box Glove Holder Horizontal Mount (Model: GS-123)
1013-137	Bowman 4 Box Glove Holder for Horizontal Rail (Model: GP-061)
1013-138	Bowman 3 Box Glove Holder for Horizontal Rail (Model: GW-055)
1013-194	Bowman Single Box Glove Holder for Horizontal Rail

Example: 1013-132



For additional information on the glove holder listed or if you do not see your holder listed, contact Nexxspan Healthcare for a complete list of available adapters.

Health Care Logistics Mounting Kit

*Glove box holder and gloves not included.

Part Number	Adapters Available For:
1013-343 – Horizontal 1013-343V – Vertical	Health Care Logistics Three Glove Holder Horizontal or Vertical Rail Mount (Model: 7467-01)
1013-395 – Horizontal 1013-395V – Vertical	Health Care Logistics Quad Glove Holder Horizontal or Vertical Rail Mount (Model: 11948)
1013-884	Health Care Logistics 3 Glove Holder Horizontal Rail Mount (Model: 17898)
1013-985 - Horizontal 1013-985V - Vertical	Health Care Logistics Quad Steel Glove Holder Horizontal or Vertical Rail Mount (Model: 17899)

1013-343



1013-395



For additional information on the glove holder listed or if you do not see your holder listed, contact Nexxspan Healthcare for a complete list of available adapters.

Grainger Glove Holder Mounting Kit

*Glove box holder and gloves not included.

Part Number	Adapters Available For:
1013-118	Grainger 4 Box Glove Holder Vertical Mount (Model: 6GKY5)
1013-119	Grainger 4 Box Glove Holder Horizontal Mount (Model: 6GKY5)

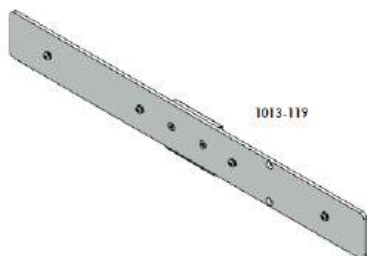


Plate measures 22"w by 2.50"h and can be used horizontally or vertically

Part Number	Adapters Available For:
1013-131	Grainger 3 Box Glove Rack Horizontal Mount (Model: 6GKY3; also works on Unimed BVTH004055)
1013-133	Grainger 3 Box Glove Rack Vertical Mount (Model: 6GKY3; also works on Unimed BVTH004055)



Plate measures 14.25"w by 2.50"h and can be used horizontally or vertically

If you do not see your glove holder listed, contact Nexspan Healthcare for a complete list of available adapters.

Medline Glove Box Mounting Kit

*Gloves and glove box holder not included.

Part Number	Adapters Available For:
1013-145 – Horizontal 1013-146 – Vertical	Medline 3 Box Glove Holder for Vertical or Horizontal Rail Mount (Model: MDS193097B/GB-003)
1013-379	Medline 3 Box Glove Holder (Model: MDS 193196B)



Plate measures 16"
wide by
9" high

**Medline –
1013-145
1013-146**



**Medline -
1013-379**



Part Number	Adapters Available For:
1013-370	Medline 2 Glove Box Holder Extended Length (Model: MDS192096XL)



Plate measures 10" wide by
8" high



Eco Glove by Zing Green Products - 3 Box Glove Holder for Horizontal or Vertical Rail Mount Kit (Model: ZING 7222)

Part Number: 1013-177H – Horizontal Rail Mount

1013-177V – Vertical Rail Mount

*Plate measures 16" w by 9" high. Glove box holder and gloves not included.



1013-177H



1013-177V



Market Lab 3 Box Glove Holder for Horizontal or Vertical Rail Mount Kit (Model: ML3615)

Part Number: 1013-187H – Horizontal Rail Mount

1013-187V – Vertical Rail Mount

*Plate measures 16" w by 9" high.
Glove box holder and gloves not included.



1013-187H



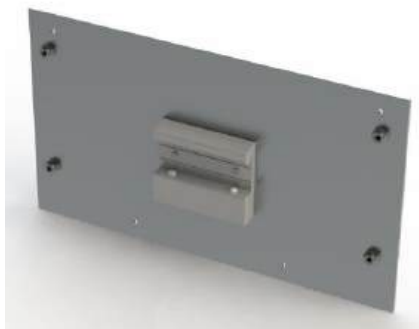
1013-187V



Omnimed 3 Box Glove Holder for Horizontal Rail Mount Kit – White Powder (Model: 305380)

Part Number: 1013-130

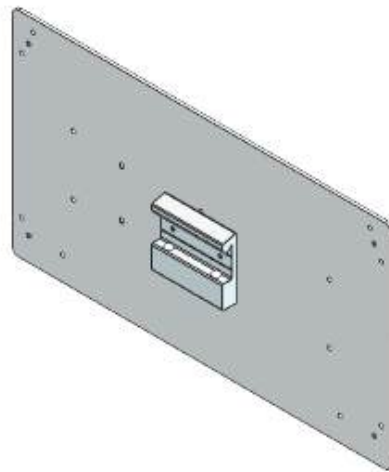
*Plate measures 12" wide x 7" high.
Holder not included.



Phipps & Bird Accente 3 Box Glove Holder Mounting Kit (Model: 10-GBTR-18)

Part Number: 1013-115

*Plate measures 16" wide x 9" high.
Holder not included.



*If you do not see your glove holder listed, contact Nexxspan Healthcare
for a complete list of available adapters.*

Universal Face Mask Dispenser Holder (Designed for Boxes with width between 6.50" – 8.0", Height between 4" – 5.5" and Depth between 4.5" – 5.5")

Part Number: 1013-149

*Holder and mounting kit.



Bowman Face Mask Dispenser (Model: FB-090)

Part Number: 1013-147

*Plate measures 8.5" wide x 4" high.
Holder not included.



Halyard Surgical Mask Dispensers with Adapter

*Dispenser and adapter included

Part Number	Adapters Available For:
1013-802	Halyard Surgical Mask Dispenser Measures 8" tall x 5" wide x 7.75" deep (Model 48220, 49235)
1013-806	Halyard Surgical Mask Dispenser Measures 7.25" tall x 4.13" wide x 5.75" deep (Model 48100, 47625, 59928)
1013-808	Halyard Surgical Mask Dispenser Measures 7.63" tall x 9" wide x 3.88" deep (Model 48147, 48247)
1013-810	Halyard Surgical Mask Dispenser Measures 9.13" tall x 3.88" wide x 7.25" deep. (Model 47500)



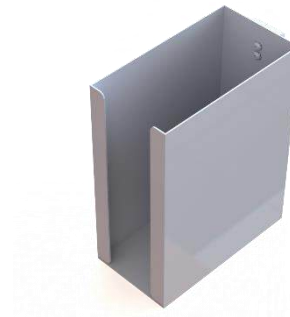
1013-802



1013-806



1013-808

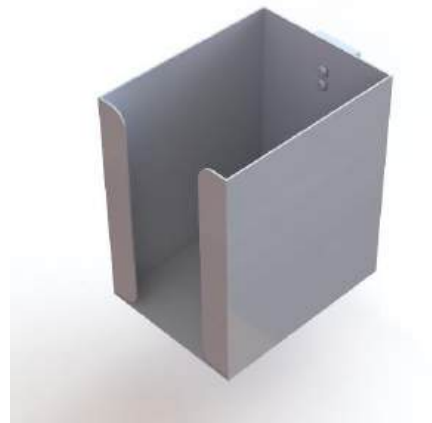


1013-810

Mask Dispenser Holder (Model: Precept Tape Fog Shield, 65-3322)

Part Number: 1013-801

*Holder and mounting kit.
Measures 4.75" wide x 7.13" tall x 6.13" deep.



Medichoice Sponge Counter Bag Dispenser

Part Number: 1055-010

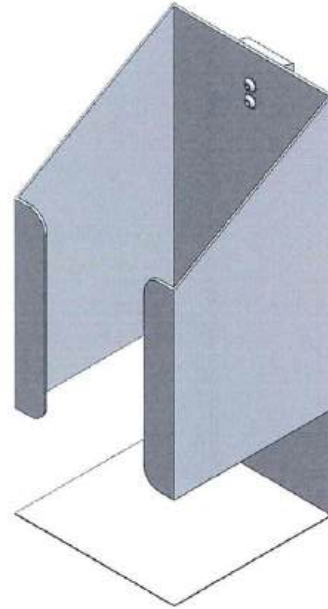
*Holder and mounting kit..



Scrub Brush Dispenser Holder (Model: BDE-Z Scrub 107)

Part Number: 1013-812

*Plate measures 8.5" wide x 4" high.
Holder and mounting kit included.



Kleenex Tissue Box Dispenser Holder (Fits boxes 4.5" wide x 6" high x 1.3" deep)

Part Number: 1013-815

*Holder and mounting kit included.



Mounting Kit for Various PPE Dispensers

Part Number: 1013-989



**1013-989
Mounting Kit**

Two 3" wide x 24" high plates, each with a rail adapter and stand-off stopper.

Manufacturer/Model	Description
Bowman PS412-0212	Protective Wear Organizer - 4" - Quad Glove Holds gowns, aprons, or overalls/jumpsuits, four boxes of gloves, earloop masks, and shield masks ADA. Dispenser measures: 26.63" high X 23.37" wide X 4" deep.
Bowman PS016-0512	Protective Wear Organizer: Holds gowns, aprons, or overalls/jumpsuits, three boxes of gloves, one box of earloop masks, one box of face shields, and miscellaneous items. Dispenser measures: 25.63" high X 22.75" wide X 4.58" deep.
Healthcare Logistics 18309	Protection organizer holds four boxes of gloves, two boxes of face masks and also has a dispensing slot for gowns. Dispenser measures: 4.5" Deep X 21" wide X 26.75" long.



Use with
Bowman
Model PS412-0212



Use with
Bowman
Model PS016-0512



Use with
Healthcare Logistics
Model 18309

Mounting Kit for Market Lab PPE Dispenser

Part Number: 1013-981

- Two 3" wide x 22" long plates each with a rail adapter and stand-off stopper.

Manufacturer/Model	Description
Market Lab VWR International 10031-850	All-In-One PPE Dispenser holds gloves, masks, gowns, caps, and shoe covers. Hanger sold separately. Measures: 23" high x 4.5" deep x 21.25" wide



**1013-981
Mounting Kit**



**Use with
Market Lab
Model VWR 1003-850**

Sharps



- Mounts to Nexxspan Equipment Management Rail, Fairfield style using snap action adapter, with positive snap attachment lock feature.
- Snap action adapter has tamper proof secured lock feature via Allen screws allowing accessory to be tightly locked to equipment rail.
- Adapter material is extruded aluminum with anodized finish.

Rail Mount for Daniels Sharpsmart
(Models: S14 or S22 when using mounting kit bracket LH4008507000 or RH4008607000)

Part Number: 1013-399

*Plate measures 8" wide x 4" high.
Container not included.



Rail Mount for Daniels Sharpsmart
(Models: S14 or S22 when using mounting kit bracket 4005007000, LH4000300000 or RH4000400000)

Part Number: 1013-040

*Container not included

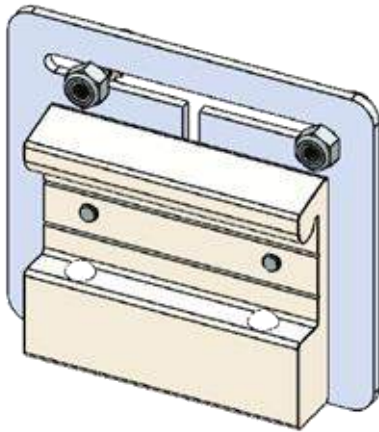


Rail Mount for Stericycle Wall Bracket for CSRX Container (Model: BKT2)

Part Number: 1013-987

*Plate measures 4" h x 3.5" w

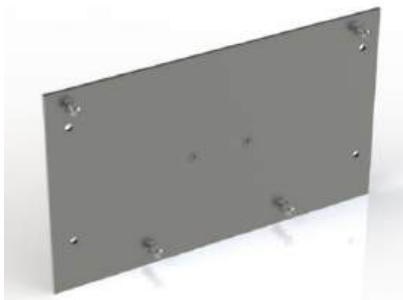
Container and wall bracket not included.



Rail Mount for Stericycle 2 Gallon Sharps, Lockable Cabinet (Model: OC-02-2004)

Part Number: 1013-046

*Container not included



Rail Mount for Stericycle Sharps Locking Wall Mount (Model: 0203WMA)

Part Number: 1013-103

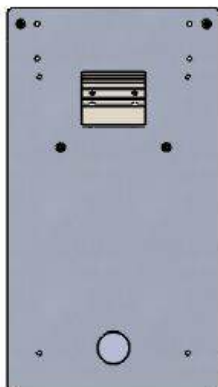
*Container not included



Rail Mount for Universal Mounting Plate Stericycle Sharps

Part Number: 1013-352

*Container not included



Rail Mount for Kendall Large Sharps Container

Part Number: 1013-039

*Container not included



Rail Mount for Kendall Standard Sharps Container

Part Number: 1013-041

*Container not included



Rail Mount for Standard Kendall (Covidien) Sharps 5 quart

Part Number: 1013-188

*Container not included



Rail Mount for Standard Kendall (Covidien) Wire Sharps Holder (Model: 8528C)

Part Number: 1013-201

*Container and wire holder not included



Rail Mount for Kendall (Covidien) Sharps (Model: 8836SA and SWM3100H))

Part Number: 1013-098

*Container not included



Rail Mount for Hidden Bracket Sharps-A-Gator (Model: 31158960; Works with 4838, 4822, 4823, 4835, 4833, 4836)

Part Number: 1013-047

*Sharps container and Sharps-A-Gator not included



Rail Mount for BD Sharps Wall Cabinet for 5.4 qt (Model: 305017)

Part Number: 1013-099

*Container not included



Rail Mount for BD Recykleen Cabinet Sharps 5.4 qt. (Model: 305096)

Part Number: 1013-097

*Container not included



Rail Mount for Holder, BD Sharps - A - Gator, PN 31307005 and BD Patient Wall Mount 305420

Part Number: 1013-991

*Container not included



Rail Mount for BD Sharps Wall Collector 5.4 qt (Models 305447, 305426)

Part Number: 1013-038

*Container and wall collector not included



Rail Mount for Sharps Universal Style Container

Part Number: 1013-009

*Container not included



Baskets & Bins



- Mounts to Nexxspan Equipment Management Rail, Fairfield “style” using snap action adapter, with positive snap attachment lock feature.
- Snap action adapter has tamper proof secured lock feature via Allen screws allowing accessory to be tightly locked to equipment rail.
- Adapter material is extruded aluminum with anodized finish

Baskets

Part Number	Description
1011-001	Utility/BP Cuff Basket with Single Rail Mount
1011-002	Fixed Basket, Rail Mount - 10" W x 6" D x 4" H
1011-003	Fixed Basket with 3 Dividers, Rail Mount - 18" W x 9" D x 4" H
1011-009	Fixed Long Basket, Rail Mount - 18" x 6" x 4"



1011-001



1011-003



1011-002



1011-009

Bins

Part Number	Description
1011-104	Single Bin Tilt Out Storage Bin OD – 3 5/8" D x 4 1/16" W x 4 1/4" H; Bins – 2 5/8" D x 3 1/2" W x 3 3/4" H
1011-100	3 Bin Tilt Out Storage Bin OD – 7 3/4" D x 23 5/8" W x 9 1/2" H; Bins – 5 7/8" D x 7 3/8" W x 8 5/8" H
1011-101	4 Bin Tilt Out Storage Bin OD – 6 5/8" D x 23 5/8" W x 8 1/8" H; Bins – 5" D x 5 5/8" W x 7 1/2" H
1011-102	5 Bin Tilt Out Storage Bin OD – 5 1/4" D x 23 5/8" W x 6 1/2" H; Bins – 3 3/4" D x 4 1/2" W x 5 3/4" H
1011-103	6 Bin Tilt Out Storage Bin OD – 3 5/8" D x 23 5/8" W x 4 1/2" H; Bins – 2 5/8" D x 3 1/2" W x 3 3/4" H



1011-104



1011-100



1011-101



1011-102



1011-103

- White outer plastic container with clear bin which opens to 45° angle.
- Bins are completely removable and easily cleaned with soap and water.
- Mounts with two adapters to Nexxspan Equipment Management Rail.
- Bins made of break resistant injection molded material.

Catheter Holders

Part Number	Description
1013-005	Short Catheter Holder Measures 7" W x 5" D x 8" H
1013-006	Long Catheter Holder Measures 6" W x 4" D x 18" H



1013-006



1013-005

- White powder coat finish with break resistant clear plastic front.
- Easily cleaned with soap and water.
- Mounts with single adapter to Nexxspan Equipment Management Rail.

Clips & Hooks



- Snap on-off design attaches securely to Nexxspan equipment rails.
- Simple Allen screw provides option for locking devices onto a rail.
- Durable finish resists scratches, stains and cleaning solutions.
- Adapters are made of aluminum with anodized finish.

Hooks

Part Number	Description
1013-013	Single Hook Holder with Rail Mount - Hook measures 5" long
1013-014	3 Utility Hook Holder with Rail Mount - Bar measures 12" wide with 3 – 5" long hooks
1013-121	Single "J" Hook
1013-387	Ambu 1" Hook
1013-403	Utility Hook - 2" long
1013-148	Large Square "U" Hook - 2" wide opening – can be use for apron



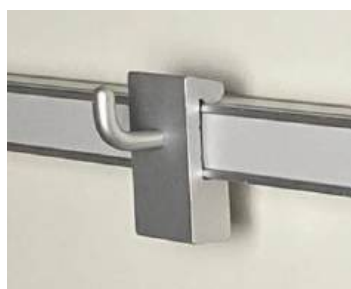
1013-013



1013-014



1013-121



1013-387



1013-403



1013-148

Holdings

Part Number	Description
1013-004	Resuscitator Holder
1013-026	Cord Wrap Holder - Holder measures 6" H; max weight load 10 lbs.
1013-166	3M Command Cord Bundler
1013-396	Reverse Cord Bundler - 1.5" x 2"



1013-004



1013-026



1013-166



1013-396



Clips

Part Number	Description
1013-029	6 Clip Organizer with Rail Mount - Bar measures 22" wide, white clips
1013-033	3 Clip Organizer with Rail Mount - Bar measures 12" wide, white clips
1013-113	Single Hook Holder with 3 Clips and Rail Mount - Hook measures 5" long, white clips
1013-114	3 Hook Holder with 9 Clips and Rail Mount - Bar measures 12" wide, hooks measure 5" long, 3 white clips per hook



1013-029



1013-033



1013-113



1013-114

Shelves



- A variety of shelf sizes and features for convenient placement of medical devices.
- Positions equipment for optimum visibility.
- Durable finish resists scratches, stains and cleaning solutions.
- Snap on-off design attaches securely to Nexxspan equipment rails.
- Simple Allen screw provides option for locking devices onto a rail.
- Adapters are made of aluminum with anodized finish.

Flat Shelves

Part Number	Description
1009-001	10" W x 8" D Flat Shelf - 25 lb weight capacity
1009-002	10" W x 13" D Flat Shelf - 25 lb weight capacity
1009-003	13" W x 13" D Flat Shelf - 25 lb weight capacity
1009-004	19" W x 13" D Flat Shelf - 25 lb weight capacity



1009-001



1009-002



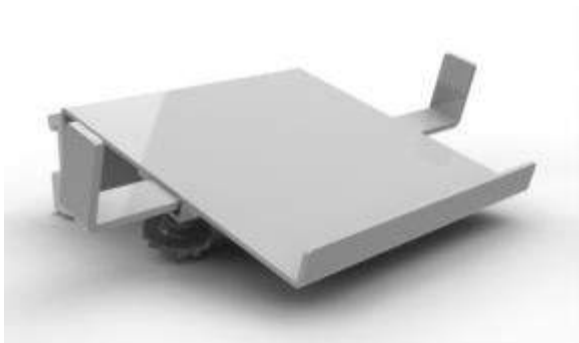
1009-003



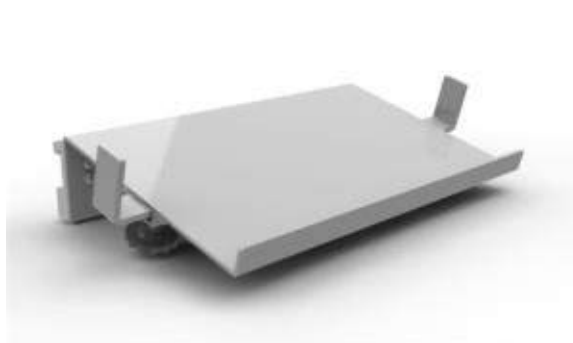
1009-004

Angled Shelves

Part Number	Description
1009-005	8" W x 8" D Angled Shelf - 25 lb weight capacity
1009-006	13" W x 8" D Angled Shelf - 25 lb weight capacity
1009-014	8" W x 8" D Angled Shelf with Strap - Strap measures 1" wide, 36" overall length - 25 lb weight capacity
1009-015	13" W x 8" D Angled Shelf with Strap - Strap measures 1" wide, 36" overall length - 25 lb weight capacity



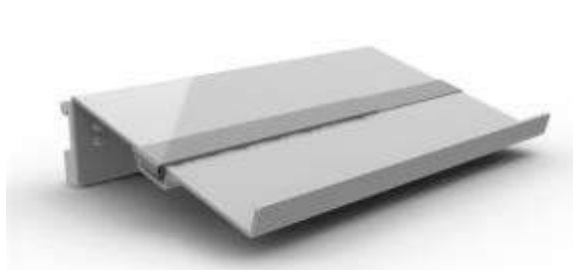
1009-005



1009-006



1009-014



1009-015

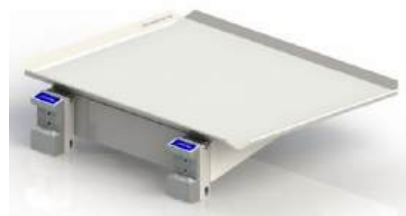
Foldable Hinged Shelves

*Allows shelf to be folded out of the way when not in use

Part Number	Description
1009-007	9" W x 12" D Foldable, Hinged Shelf with Rail Mount - 25 lb weight capacity
1009-008	13 ½" W x 10" D Foldable Hinged Shelf with Rail Mount - 25 lb weight capacity
1009-009	17" x 12" Foldable Hinged Shelf with Rail Mount - 25 lb weight capacity



1009-007



1009-008



1009-009



WORXX Shelves

*Single hand use shelf for a variety of procedure and equipment applications. Shelf can be folded out of the way when not in use

Part Number	Description
1009-100	10" x 15" WORXX Station Fold Up Shelf with Rail Mount - 10 pound weight capacity
1009-101	10" x 15" WORXX Station Fold Up Shelf with 1" – 1.5" Pole Mount - 10 pound weight capacity

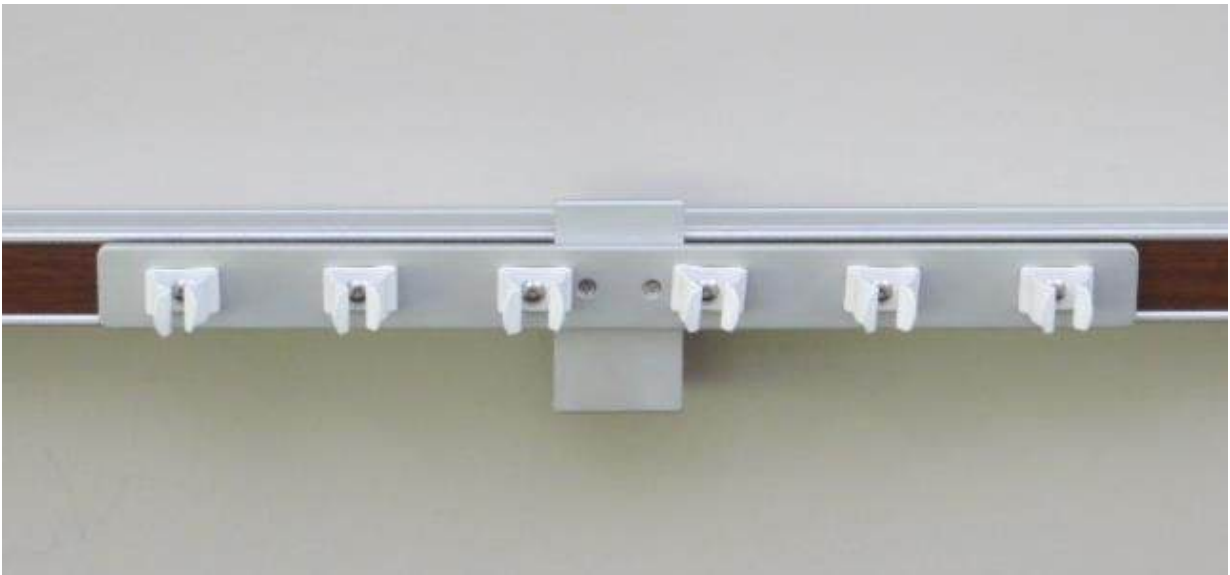


1009-100



1009-101

Additional Accessories



- A variety of unique adapters for specialty applications.
- Durable finish resists scratches, stains and cleaning solutions.
- Snap on-off design attaches securely to Nexxspan equipment rails.
- Simple Allen screw provides option for locking devices onto a rail.
- Adapters are made of aluminum with anodized finish.

Additional Accessories– Page 1 of 6

Part Number	Description
1008-001	Vacuum Bottle with Slide Mount *Vacuum bottle not included
1013-001	Chart Holder – 10"H x 13"W *Includes chart holder and mount
1013-007	3 Clip Hose Holder – 5" W *Includes clips, holder and mount
1013-008	6 Clip Hose Holder *Includes clips, holder and mount



1008-001
*Vacuum
bottle not
included



1013-001



1013-007



1013-008



Additional Accessories— Page 2 of 6

Part Number	Description
1013-015	"E" Cylinder Bottle Holder – 5.5"W x 22.5" L *Includes bottle holder and mount
1013-021	Waste Basket Mount *Includes mount only
1013-020	Waste Basket and Universal Mount *Includes waste basket and mount
1013-022	Universal Pole Mount
1013-019	Rail, Light Duty, 8", Pole Mounting



1013-015



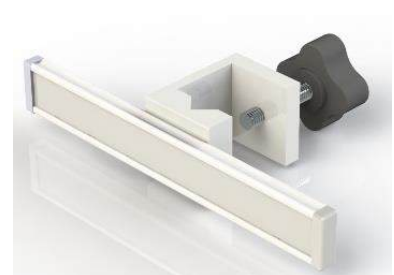
1013-021



1013-020



1013-022



1013-019

Additional Accessories— Page 3 of 6

Part Number	Description
500-001	Rail Mounted Power Strip - 4 Hospital Grade Receptacles - 15' cord
1013-027	Telephone Mount - Measures 4.5" H x 2.75" W
1013-042	Holder for Emesis-Bag for Wall Mount Dispenser
1013-371	Rail Mount for Medline Scrub Brush Box Holder - Model: DYNDBRKT
1013-470	Rail Mount for RX Destroyer Drug Disposal Gallon Holder - Model RX1_0WallSec



500-001



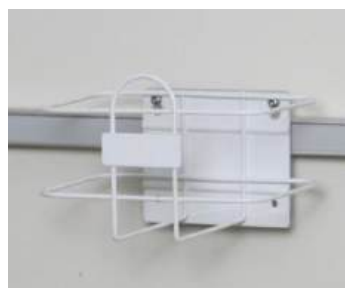
1013-027



1013-042



1013-371



1013-470

Additional Accessories— Page 4 of 6

Part Number	Description
1013-410	Rail Mount for 3M Razor - (Model 9662L). - Razor and holder not included.
1055-020	Stainless Steel Cup with Holder and Rail Mount - Cup measures 5" tall
1013-422	Cup Holder Only with Rail Mount - Round opening 3.24" diameter
1013-404	Rail Mount for CareFusion Razor holder. Adapter only.



1013-410



1013-404
Adapter only



**1055-020 – Cup and
Holder**



**1013-422 -
Holder Only**

Additional Accessories— Page 5 of 6

Part Number	Description
1013-345	IPAD/Tablet Holder - Two pieces
1013-445	Patient Phone Holder (Phone Not Included) - MEDPAT
1013-344	Pillow Speaker/Nurse Call Holder C- Style/Curbell Medical Style/ Patient Angled Phone Handset (Med-Pat), Rail Mount Kit Note: Only for hanging phone handset

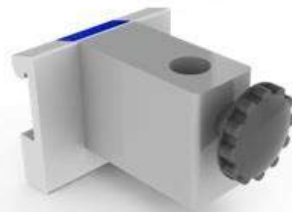


Additional Accessories – Page 6 of 6
Light & Other Mounts

Part Number	Description
1015-001	Luxo Lamp Holder
1015-003	Waldman Euro Style Lamp Holder
1013-028	Flex Arm Respiratory Circuit Holder Mount
1013-025	Mounting Kit for Pole Mount Transducer *Pole measures 23.75" long with a 0.75" diameter.



1015-001



1015-003



1013-028



1013-025

Channel Mounts



- Provides secure attachment of monitor.
- GCX arm provided by others.
- Durable finish resists scratches, stains and cleaning solutions.
- Snap on-off design attaches securely to Nexxspan equipment rails.
- Simple Allen screw provides option for locking devices onto a rail.
- Adapters are made of aluminum with anodized finish.

Channel Mounts – Page 1 of 3

Part Number	Description
1010-001	GCX Channel with Adapters – 16" – 24" Span between Rail
1010-002	GCX Channel with Adapters – 22" – 28" Span between Rail
1010-003	GCX Adapter Plate (GCX by others) – 16" – 24" Span between Rail
1010-004	GCX Adapter Plate (GCX by others) – 20" – 28" Span between Rail
1010-005	GCX Adapter Plate (GCX by others) – 16" – 24" Span between Rail and MGR



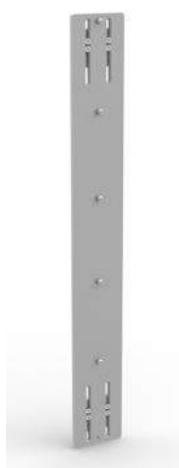
1010-001



1010-002



1010-004



1010-003



1010-005

Channel Mounts – Page 2 of 3

Part Number	Description
1010-006	GCX Channel with Adapters – 16" x 24" Span between Rail and MGR
1010-010	GCX Channel – 7", 38mm Pole Mounting
1010-012	GCX Channel 25" Wall Mounting
1010-013	GCX Channel 31" Wall Mounting


1010-006

1010-010

1010-012

1010-013

Channel Mounts – Page 3 of 3

Part Number	Description
1010-016	GCX Adapter Plate (GCX by others) – 16" – 24" between Flush Mounted Heavy Duty Rail, Spanning a MGR
1010-017	GCX Adapter Plate (GCX by others) – 20" – 28" between Flush Mounted Heavy Duty Rail, Spanning a MGR
1010-018	GCX Channel with Adapters – 16" – 24" between Flush Mounted Heavy Duty Rail, Spanning a MGR
1010-019	GCX Channel with Adapter – 20" – 28" between Flush Mounted Heavy Duty Rail, Spanning a MGR



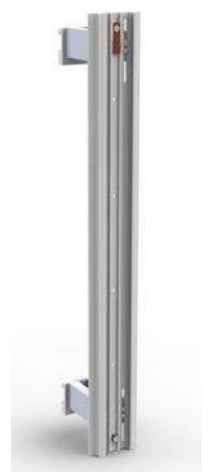
1010-016



1010-017



1010-018



1010-019

Work Surfaces



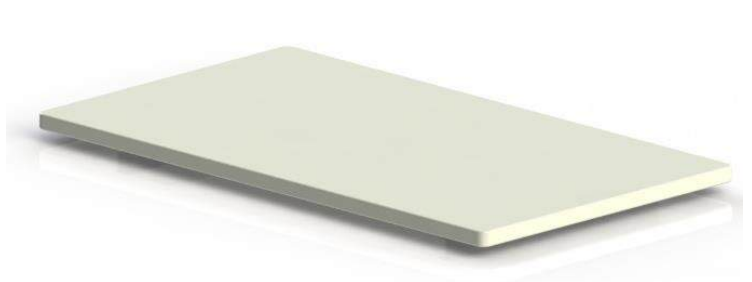
- Component based system of work surfaces and storage drawers.
- Durable finish resists scratches, stains and cleaning solutions.
- Snap on-off design attaches securely to Nexxspan equipment rails.
- Simple Allen screw provides option for locking devices onto a rail.
- Adapters are made of aluminum with anodized finish.

Work Surfaces – Page 1 of 4

Part Number	Description
1011-004	Rail Kit, C-Frame Side, Light Duty Rail with Stand Offs
1011-004B	Rail Kit, C-Frame Side, Heavy Duty Rail, Flush Mount
1011-016	Extended Counter Top – 32" Wide x 18" deep
1011-017	Standard Counter Top for C-Frame – 24" wide x 18" deep



1011-004



1011-016



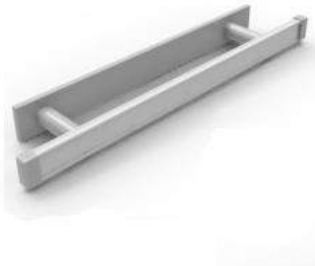
1011-004B



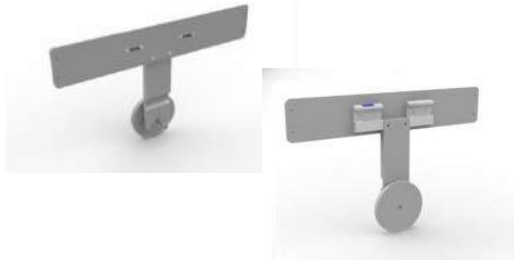
1011-017

Work Surfaces – Page 2 of 4

Part Number	Description
1011-004	C-Frame Side, Light Duty Rail with Stand Offs Mount Kit
1011-005A	C-Frame Mounting Adapter Rail Only, for Heavy Duty Rail Mounting - Compatible with Herman Miller C-Frame
1011-006	C-Frame, with A and B Drawers, Standard Top, Mounting Kit to Equipment Rail
1011-007	C-Frame with A and B Drawers, Extended Top, Mounting Kit to Equipment Rail
1011-015	C-Frame – 22" x 17" x 10"



1011-004



1011-005A



1011-006



1011-007



1011-015

Work Surfaces – Page 3 of 4

Part Number	Description *Drawers Measure 20.5" Wide x 15.4" Deep
1011-018	Drawer A – 3" High - Non-Lock
1011-019	Drawer B – 6" High – Non-Lock
1011-020	Drawer C – 9" High – Non-Lock
1011-021	Drawer A – 3" High – Lockable Front
1011-022	Drawer B – 6" High – Lockable Front
1011-023	Drawer C – 9" High – Lockable Front



1011-018



1011-019



1011-020



1011-022



1011-021



1011-023

Work Surfaces – Page 4 of 4

Part Number	Description
1011-027	Touchpad Lock, 3" High, A-Drawer
1011-028	Touchpad Lock, 6" High, B-Drawer
1011-029	Touchpad Lock, 9" High C-Drawer



1011-027



1011-028



1011-029

Infusion Management



- Safely organizes infusion equipment.
- Adaptable to changing technologies and patient care protocols.
- Eliminates floor stands.
- Durable finish resists scratches, stains and cleaning solutions.
- Snap on-off design attaches securely to Nexxspan equipment rails.
- Simple Allen screw provides option for locking devices onto a rail.
- Adapters are made of aluminum with anodized finish.

Infusion Management – Page 1 of 3

Part Number	Description
1013-024	Post Holder - 1" Diameter x 4" High
1014-001	Single Infusion Pump Holder, Single Rail Mount -36" x 20" Pole, 3 Hooks
1014-002	Dual Swivel Infusion Pump Holder, Single Rail Mount - 36" x 20" Pole, 3 Hooks per Pole
1014-003	Fixed Single Infusion Pump Holder, Dual Rail Mount - 36" x 20" Pole, 3 Hooks
1014-004	Fixed Single Infusion Pump Holder, Dual Rail Mount – 48" x 20" Pole, 3 Hooks



1013-024



1014-001



1014-002



1014-003



1014-004

Infusion Management – Page 2 of 3

Part Number	Description
1014-005	Fixed Single Infusion Pump Holder, Single Rail Mount – 16" x 10" Pole, 3 Hooks
1014-006	Fixed Single Infusion Pump Holder, Single Rail Mount – 25" x 15" Pole, 3 Hooks
1014-007	Fixed Single Infusion Pump Holder, Single Rail Mount – 30" x 20" Pole, 3 Hooks
1014-P11	Infusion Pump Mount Holder – 1" Diameter x 6" high with Snap Action Adapter for Rail Mounting



1014-005



1014-006



1014-007



1014-P11

Infusion Management – Page 3 of 3

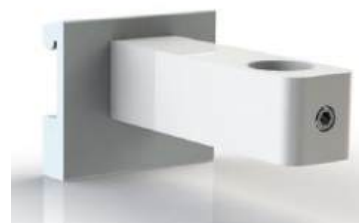
Part Number	Description
1014-011	IV Swing Arm – 12" x 20", 1.5" Pole Mount with 36" IV Pole
1014-012	IV Swing Arm – 12" x 20", GCX Mounting with 36" IV Pole
1014-P06	Single Pole Holder – 36" Long with 20" IV Pole and 3-Hook Hanger
1014-P07	Single Holder – 1" IV Pole Holder, Rail Mount with Snap Action Adapter for Rail Mounting
1014-008	IV Swing Arm – 12" x 20", 1.5" Pole Mount, Arm Only
1014-010	Single Articulation IV Swing Arm – 12", for 1-½" Pole Mount



1014-011



1014-012



1014-P07



1014-010



1014-P06



1014-008

Mobile Solutions



- Convenient solutions to manage surge and mass casualty solutions.
- Durable finish resists scratches, stains and cleaning solutions.
- Snap on-off design attaches securely to Nexxspan equipment rails.
- Simple Allen screw provides option for locking devices onto a rail.
- Adapters are made of aluminum with anodized finish.

Mobile Solutions

Part Number	Description
1025-001	Memo 2 Cart: 3 Parallel Rails
1025-001S	Memo 2 Cart: Short with C-Frame Adapter
1025-002	Memo 2 Cart: 2 Parallel Rails, 2 Swivel Rails, 1 Adapter Rail for Mounting C-Frame
1025-015	Memo 4 Cart: Oxygen “H” Tanks with Integrated Equipment Management



1025-001



1025-001S



1025-002



1025-015

Emergency Preparedness



Immediately deploy adequate gas and supply management safely and effectively regardless of the challenge a multiple victim incidence presents.



Expand from inside the hospital room to the hallway whenever patient capacity requires it.

Hurricane, Tornado, Earthquake, Fire, Flu/Pandemic, Multiple Victim Event and Hospital Infrastructure failure are all real emergencies which must be planned and prepared for as realistic possibilities.

It's not a matter of if it happens but when.

Be Ready For Anything

- The key to readiness is the ability to react quickly and expand capabilities as the needs arise.
- Meeting overflow demands is achieved using an Equipment Management System that can expand along with your patient admissions.

Efficient

- Immediately deploy gas delivery options without tanks or stands on the floor.
- Non-invasive, immediate expansion of medical gas services, regardless of space constraints.

Flexible

- Cover both surge population care and pre-decontamination nursing stations with the same cart.
- Deploy mobile gas delivery wherever prescribed, from a parking lot to a conference room.

Promote Safety

- Effective distribution of infection control tools when and where they are needed.
- Take the essential tools necessary for proper, individualized, care directly to the patient..

Adaptable

- Using an Equipment Management System, adjust equipment and supplies based on patient needs.



Emergency Preparedness



Let Nexxspan™ become your partner in preparing for the unexpected, as we commit to providing the best in emergency preparedness equipment management and deployment.

With Nexxspan's Equipment Rails, Mobile Carts, Medical Gas Rails and Headwalls, easily expand patient capacity both inside and outside the facility.



Mobile Carts

Nexxspan's™ Mobile Cart options allow for immediate deployment of multiple patient care stations for emergency and surge populations, bringing portable oxygen delivery to non-patient care environments.



Pre-planned Equipment

Nexxspan's™ Equipment Rails can be placed in hallways, waiting rooms and other public spaces to permit easy expansion of patient treatment areas. Equipment can be placed on the rails rather than on the floor and gases can be made available from a gas cylinder using a gas block and hoses.

Nexxspan's™ Matrixx-M vertical headwall system and the Medical Gas Horizontal Rail distribute gases and electrical throughout the length of the equipment to better accommodate multiple beds in the case of a multiple victim incidence.

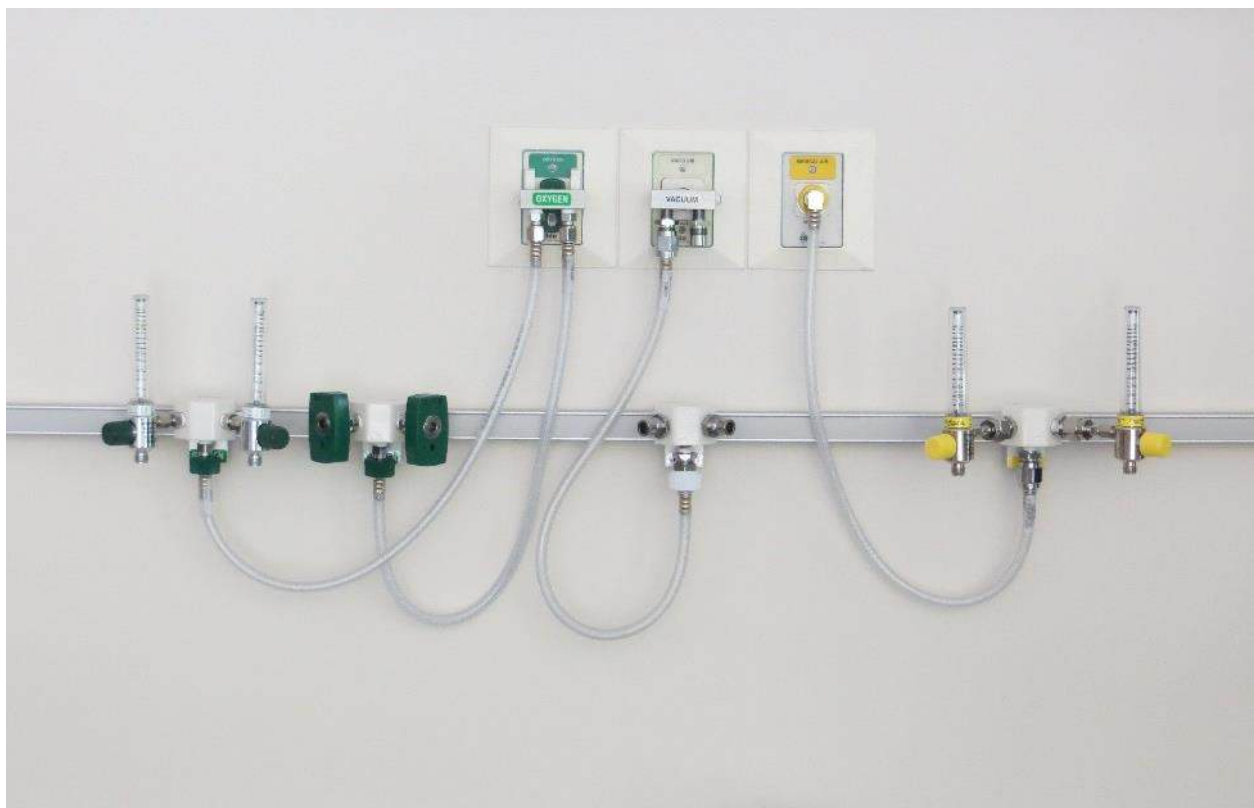


Gas Management



- Unique compact design saves horizontal rail space.
- All gas blocks pre-drilled for side check valves allowing for future expansion.
- Durable finish resists scratches, stains and cleaning solutions.
- Snap on-off design attaches securely to Nexxspan equipment rails.
- Simple Allen screw provides option for locking devices onto a rail.
- Adapters are made of aluminum with anodized finish.

Expand Gas Capabilities



How to Order

First thing it is important to determine is the facilities' standard outlet style.

- **DISS – Diameter-Index Safety System**
- **Medaes®/Ohmeda Compatible – Quick Connect**
- **Chemtron Compatible – Quick Connect**
- **Puritan Bennett Compatible – Quick Connect –**
Outlets are available for walls, headwalls, consoles, ceiling and ceiling columns

Next determine:

How many additional gases are you trying to add OR are you simply just moving (extending) the gas locations.

Nexxspan Products:

- A splitter: Connects directly to an existing outlet and creates two independent access points.
- A block is a relocated access point which requires a connection via a hose from existing source or splitter.
- Rail is used to secure block at desired locations.

Example:

In this instance, you are taking a single existing outlet.

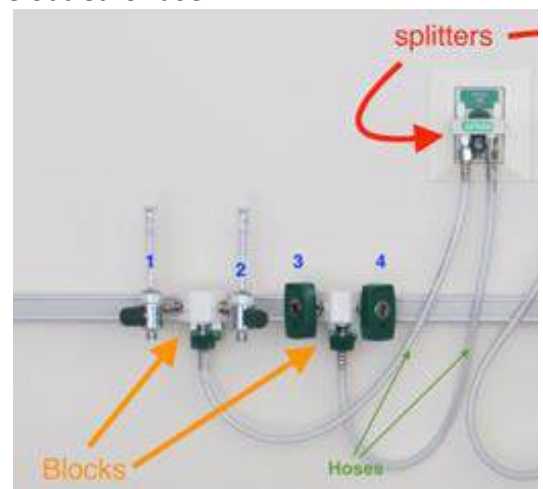
Using a splitter with identified source outlet style and connect two hoses with DISS fitting to reach two blocks. Hoses connect the blocks, and the blocks present facility style outlet for use.

A rail is placed on the wall at desired location and height. The block is attached to the rail and now a single outlet has become 4 access points at a more desired functional location.

Once you have determined the proper configuration:
Be sure to measure the length of rail and hoses needed to accomplish.

*Keep in mind the PSI to the outlet is being utilized by quantity of off shoots.

HOSPITAL IS RESPONSIBLE FOR ENSURING CORRECT GAS FLOW IS AVAILABLE TO SUPPORT THE EXPANSION.



Mounting Kit for Bird Blender

Part Number: 1013-023

*Slide measures 2" wide by 3" high.
Device not included.



Mounting Kit for Rail Mount for Neopuff

Part Number: 1013-036

*Slides measures 1.54" wide by 1.82" high.
Device not included.



Ventilator Manifolds

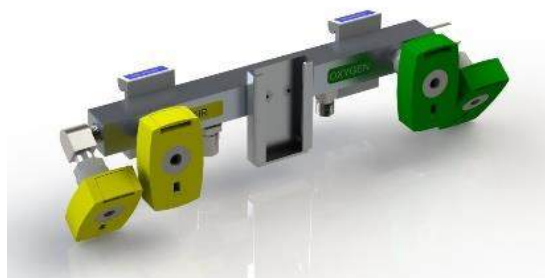
Part Number	Description
1006-001	Air/Oxygen Manifold with 2 Air DISS and 2 Oxygen DISS with Blender Bracket
1006-002	Air/Oxygen Manifold with 3 Air DISS and 3 Oxygen DISS with Blender Bracket
1006-003	Air/Oxygen Manifold with 2 Air and 2 Oxygen Chemetron Quick-Connectors with Blender Bracket
1006-004	Air/Oxygen Manifold with 2 Air and 2 Oxygen Ohmeda (Ohio) Quick-Connectors with Blender Bracket



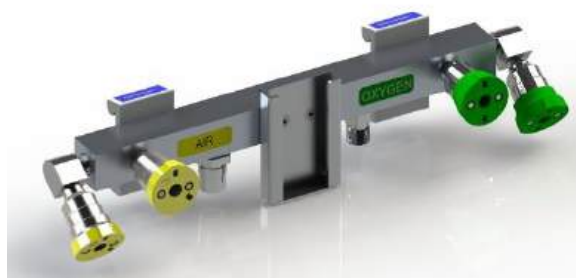
1006-001



1006-002



1006-003



1006-004

- Organizes ventilator connectors for safe positive connections.
- Provides separation between respiratory and nursing functions.
- Compact design saves horizontal rail space.

Oxygen Gas Blocks – Page 1 of 4

Part Number	Description
1105-001	1 - 1/8" NPT Front
1105-011	1 - 1/8" NPT Front, DISS Side
1105-002	1 DISS Front
1105-012	1 DISS Front, DISS Side
1105-003	1 Ohmeda (Ohio) Quick Connect Front
1105-013	1 Ohmeda (Ohio) Quick Connect Front, DISS Side



1105-001



1105-011



1105-012



1105-013



1105-002



1105-003

Oxygen Gas Blocks – Page 2 of 4

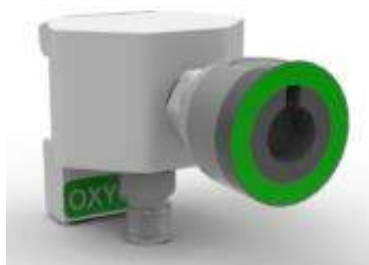
Part Number	Description
1105-004	1 Chemetron Quick Connect Front
1105-014	1 Chemetron Quick Connect Front, DISS Side
1105-005	1 Puritan Quick Connect Front
1105-015	1 Puritan Quick Connect Front, DISS Side



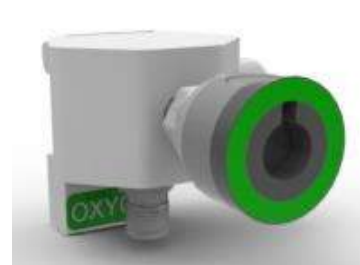
1105-004



1105-014



1105-005



1105-015

Oxygen Gas Blocks – Page 3 of 4

Part Number	Description
1205-001	2 - 1/8" NPT Front
1205-011	2 - 1/8" NPT Front, DISS Side
1205-111	2 - 1/8" NPT Front, 2 DISS Side, Top Feed
1205-002	2 DISS Front
1205-012	2 DISS Front, DISS Side



1205-001



1205-011



1205-111



1205-002



1205-012

Oxygen Gas Blocks – Page 4 of 4

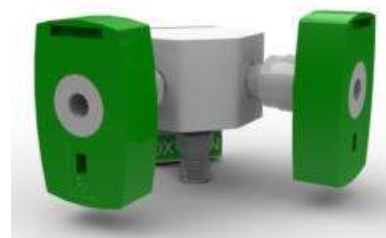
Part Number	Description
1205-003	2 Ohmeda (Ohio) Quick Connect Front
1205-013	2 Ohmeda (Ohio) Quick Connect Front, DISS Side
1205-004	2 Chemetron Quick Connect Front
1205-014	2 Chemetron Quick Connect Front, DISS Side
1205-005	2 Puritan Quick Connect Front
1205-015	2 Puritan Quick Connect Front, DISS Side



1205-003



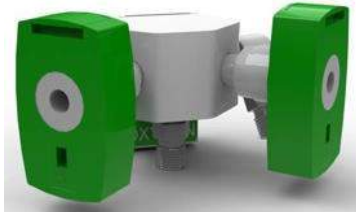
1205-013



1205-004



1205-005



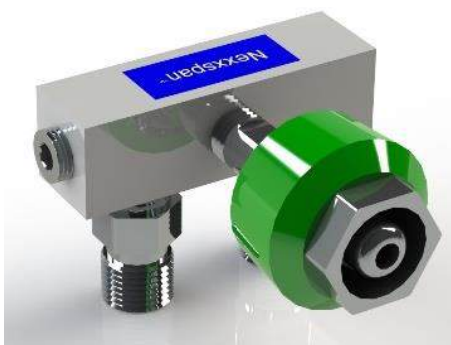
1205-014



1205-015

Oxygen Outlet Splitter Blocks

Part Number	Description
1006-017	DISS to 2 DISS Outlets
1006-009	Chemetron Quick Connect to 2 DISS Outlets
1006-007	Ohmeda (Ohio) Quick Connect to 2 DISS Outlets
1006-019	Puritan Quick Connect to 2 DISS Outlets



1006-017



1006-009



1006-007



1006-019

Oxygen Hoses – Page 1 of 3

Part Number	Description
1007-001	24" DISS to DISS Handnut Straight
1007-301	24" DISS Straight to DISS Handnut with 90° Fitting
1007-004	24" DISS to Ohmeda (Ohio) Style Quick Connect with 90° Fitting
1007-005	24" DISS to Chemetron Style Quick Connect with 90° Fitting
1007-006	24" DISS to Puritan Style Quick Connect with 90° Fitting



1007-001



1007-301



1007-005



1007-004



1007-006

Oxygen Hoses – Page 2 of 3

Part Number	Description
1007-101	36" DISS to DISS Handnut Straight
1007-311	36" DISS Straight to DISS Handnut with 90° Fitting
1007-104	36" DISS to Ohmeda (Ohio) Style Quick Connect with 90° Fitting
1007-105	36" DISS to Chemetron Style Quick Connect with 90° Fitting
1007-106	36" DISS to Puritan Style Quick Connect with 90° Fitting
1007-120	36" DISS to DISS with 90° Fitting
1007-121	36" DISS to DISS Straight



1007-101



1007-311



1007-105



1007-120



1007-104



1007-106



1007-121

Oxygen Hoses – Page 3 of 3

Part Number	Description
1007-201	48" DISS to DISS Handnut Straight
1007-220	48" DISS to DISS with 90° Fitting
1007-321	48" DISS Straight to DISS Handnut with 90° Fitting
1007-204	48" DISS to Ohmeda (Ohio) Style Quick Connect with 90° Fitting
1007-205	48" DISS to Chemetron Style Quick Connect with 90° Fitting
1007-206	48" DISS to Puritan Style Quick Connect with 90° Fitting



1007-201



1007-220



1007-321



1007-204



1007-205



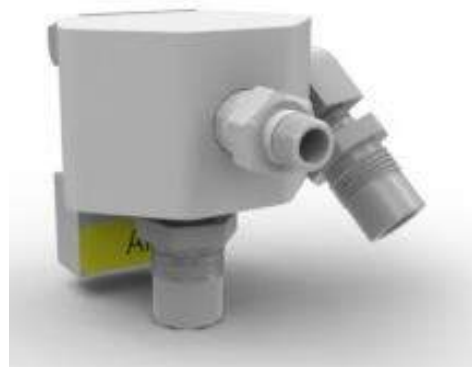
1007-206

Air Gas Blocks – Page 1 of 4

Part Number	Description
1125-001	1 - 1/8" NPT Front
1125-011	1 - 1/8" NPT Front, DISS Side
1125-002	1 DISS Front
1125-012	1 DISS Front, DISS Side



1125-001



1125-011



1125-002



1125-012

Air Gas Blocks – Page 2 of 4

Part Number	Description
1125-003	1 Ohmeda (Ohio) Quick Connect Front
1125-013	1 Ohmeda (Ohio) Quick Connect Front, DISS Side
1125-004	1 Chemetron Quick Connect Front
1125-014	1 Chemetron Quick Connect Front, DISS Side
1125-005	1 Puritan Quick Connect Front
1125-015	1 Puritan Quick Connect Front, DISS Side



1125-003



1125-004



1125-005



1125-013



1125-014



1125-015

Air Gas Blocks – Page 3 of 4

Part Number	Description
1225-001	2 - 1/8" NPT Front
1225-011	2 - 1/8" NPT Front, DISS Side
1225-111	2 - 1/8" NPT Front, 2 DISS Side, Top Feed
1225-002	2 DISS Front
1225-012	2 DISS Front, DISS Side



1225-001



1225-011



1225-002



1225-111



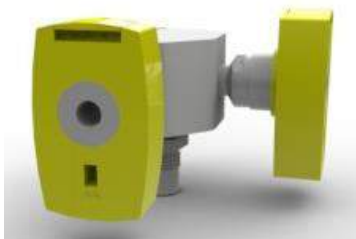
1225-012

Air Gas Blocks – Page 4 of 4

Part Number	Description
1225-003	2 Ohmeda (Ohio) Quick Connect Front
1225-013	2 Ohmeda (Ohio) Quick Connect Front, DISS Side
1225-004	2 Chemetron Quick Connect Front
1225-014	2 Chemetron Quick Connect Front, DISS Side
1225-005	2 Puritan Quick Connect Front
1225-015	2 Puritan Quick Connect Front, DISS Side



1225-003



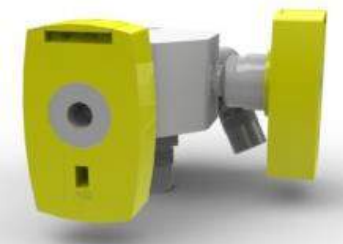
1225-004



1225-005



1225-013



1225-014



1225-015

Air Outlet Splitter Blocks

Part Number	Description
1006-016	DISS to 2 DISS Outlets
1006-008	Chemetron Quick Connect to 2 DISS Outlets
1006-005	Ohmeda (Ohio) Quick Connect to 2 DISS Outlets
1006-021	Puritan Quick Connect to 2 DISS Outlets



1006-016



1006-008



1006-005



1006-021

Air Hoses – Page 1 of 3

Part Number	Description
1007-003	24" DISS to DISS Handnut Straight
1007-303	24" DISS Straight to DISS Handnut with 90° Fitting
1007-010	24" DISS to Ohmeda (Ohio) Style Quick Connect with 90° Fitting
1007-011	24" DISS to Chemetron Style Quick Connect with 90° Fitting
1007-012	24" DISS to Puritan Style Quick Connect with 90° Fitting



1007-003



1007-303



1007-010



1007-011



1007-012

Air Hoses – Page 2 of 3

Part Number	Description
1007-103	36" DISS to DISS Handnut Straight
1007-118	36" DISS to DISS with 90° Fitting
1007-122	36" DISS to DISS Straight
1007-110	36" DISS to Ohmeda (Ohio) Style Quick Connect with 90° Fitting
1007-111	36" DISS to Chemetron Style Quick Connect with 90° Fitting
1007-112	36" DISS to Puritan Style Quick Connect with 90° Fitting


1007-103

1007-118

1007-122

1007-110

1007-111

1007-112

Air Hoses – Page 3 of 3

Part Number	Description
1007-203	48" DISS to DISS Handnut Straight
1007-218	48" DISS to DISS with 90° Fitting
1007-323	48" DISS Straight to DISS Handnut with 90° Fitting
1007-210	48" DISS to Ohmeda (Ohio) Style Quick Connect with 90° Fitting
1007-211	48" DISS to Chemetron Style Quick Connect with 90° Fitting
1007-212	48" DISS to Puritan Style Quick Connect with 90° Fitting



1007-203



1007-218



1007-323



1007-210



1007-211



1007-212

Vacuum Gas Blocks – Page 1 of 2

Part Number	Description
1115-001	1 - 1/8" NPT Front
1115-002	1 DISS Front
1115-003	1 Ohmeda (Ohio) Quick Connect Front
1115-004	1 Chemetron Quick Connect Front
1115-005	1 Puritan Quick Connect Front



1115-001



1115-002



1115-003



1115-004



1115-005

Vacuum Gas Blocks – Page 2 of 2

Part Number	Description
1215-001	2 – 1/8" NPT Front
1215-002	2 DISS Front
1215-003	2 Ohmeda (Ohio) Quick Connect Front
1215-004	2 Chemetron Quick Connect Front
1215-005	2 Puritan Quick Connect Front



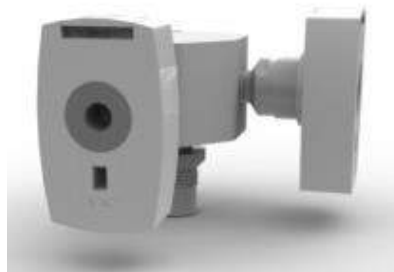
1215-001



1215-002



1215-003



1215-004



1215-005

Vacuum Wall Outlet Splitter Blocks

Part Number	Description
1006-018	DISS to 2 DISS Outlets
1006-012	Chemetron Quick Connect to 2 DISS Outlets
1006-011	Ohmeda (Ohio) Quick Connect to 2 DISS Outlets
1006-020	Splitter Block, Vacuum, Puritan QC to 2 DISS Outlets



1006-018



1006-012



1006-011



1006-020

Vacuum Hoses – Page 1 of 3

Part Number	Description
1007-002	24" DISS to DISS Handnut Straight
1007-302	24" DISS Straight to DISS Handnut with 90° Fitting
1007-007	24" DISS to Ohmeda (Ohio) Style Quick Connect with 90° Fitting
1007-008	24" DISS to Chemetron Style Quick Connect with 90° Fitting
1007-009	24" DISS to Puritan Style Quick Connect with 90° Fitting



1007-002



1007-302



1007-007



1007-008



1007-009

Vacuum Hoses – Page 2 of 3

Part Number	Description
1007-102	36" DISS to DISS Handnut Straight
1007-312	36" DISS Straight to DISS Handnut with 90° Fitting
1007-119	36" DISS to DISS with 90° Fitting
1007-123	36" DISS to DISS Straight
1007-107	36" DISS to Ohmeda (Ohio) Style Quick Connect with 90° Fitting
1007-108	36" DISS to Chemetron Style Quick Connect with 90° Fitting
1007-109	36" DISS to Puritan Style Quick Connect with 90° Fitting



1007-102



1007-312



1007-123



1007-108



1007-119



1007-107



1007-109

Vacuum Hoses – Page 3 of 3

Part Number	Description
1007-219	48" DISS to DISS with 90° Fitting
1007-322	48" DISS Straight to DISS Handnut with 90° Fitting
1007-202	48" DISS to DISS Handnut Straight
1007-207	48" DISS to Ohmeda (Ohio) Style Quick Connect with 90° Fitting
1007-208	48" DISS to Chemetron Style Quick Connect with 90° Fitting
1007-209	48" DISS to Puritan Style Quick Connect with 90° Fitting



1007-219



1007-322



1007-202



1007-207



1007-208



1007-209

Headwalls & Gas Rails



- Wall mounted systems distribute electrical services, medical gases and vacuum.
- Single connection point from the wall for utility services which are then distributed throughout the unit.
- User specified location of electrical and gas services during installation.
- Integrated equipment management via rails and poles.
- Staff can easily move and reposition equipment to better meet the needs of the patient while keeping the floor clutter free.
- Designed to allow for future expansion.

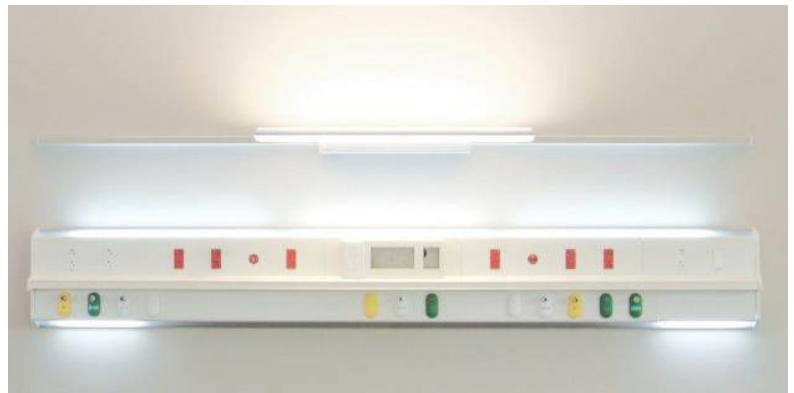
Matrixx-M Vertical Headwall System



1024-XXX-M

Part Number	Description
1024-XXX-M	Matrixx-M Vertical Headwall <ul style="list-style-type: none"> - Available in single or dual tower configurations - Custom services per signed submittal
1023-XXX	Medical Gas Rail Horizontal Headwall <ul style="list-style-type: none"> - Custom services per signed submittal

Medical Gas Rail Horizontal Headwall System



1023-XXX

Matrixx – M™



The Nexxspan Matrixx–M™ vertical headwall and equipment management system is the optimal integration of form and function.

Configuration Flexibility

The Matrixx-M™ is available in a single or dual tower, left or right-handed configuration to meet the needs of a variety of departments including critical care, emergency or trauma. The facility can also configure the location of connections prior to installation.

Equipment Management

The system has a wide range of equipment management capabilities, including a 38 mm pole for mounting of monitors and infusion pumps, as well as the Nexxspan™ Equipment Rail, for support of clinical tools such as baskets, clips and various hangers.

Ergonomically Appropriate

The essential services delivered by the Matrixx-M™ are custom configured to meet individual demands. The deployment of outlets remains in a 48" range of motion, consistent with ergonomic recommendations.

Improved Workflow

The flexible design of the Matrixx-M™ allows the clinical staff to position and reposition equipment where needed. This design provides easy access to patients and helps keep floor space clear to promote a safer, more efficient work environment.



Matrixx – M™



Clean Look, Reduces Infection Control Risks

The Nexxspan™ Matrixx-M™ is designed from the ground up with infection control in mind. Smooth, seamless lines, rear mounted service positions and new gas outlet covers virtually eliminates screw holes and dirt collection opportunity. Clean lines, easy to disinfect and reduced risk of infection-spreading germs getting caught in hard to clean spots, help make the Matrixx-M™ the “cleanest” architectural product available today.

Patients in bed only see the clean exterior of the headwall, as the service panels are located away from their visual line of sight.

Integrated Lighting and Sound Control

The unique design and engineering of the Nexxspan™ Matrixx-M™ deliberately deflects sound away from the center line of the patient care area. Unlike flat panel systems, which only bounce sound back to the patient, the shape of the Matrixx-M™ breaks up the linear travel of sound waves to soften the environmental noise.

Fully dimmable “up” and “down” lighting of the Matrixx-M™ gives the bedside team the ability to control lighting to best meet individual patient criteria. These lights can be switched from either the unit, or a remote location.

Equipment rail and accessories further enhance the ability of staff to ensure a clutter free work and family environment.

Future Proof the Facility

In wall rough-ins provide ease of single point service connections as well as future expansion capabilities. Headwalls can be added without gas certification or construction costs, as essential services are added via hose connections and simple conduit. All certifications take place at the time of initial construction. Individual outlets on the headwall are also easily serviced or even replaced without shutting zone valves off.



Medical Gas Rail



Gas and power distribution with integral Nexxspan™ equipment management and optional lighting.

The Nexxspan™ Medical Gas Rail is a surface mounted extruded aluminum gas and electric service delivery system designed to optimize flexibility, expandability and adaptability.

Component Based

- Equipment Rail, Gas and Electrical Components are independent and can be applied to meet specific needs.

Prepared for the Future

- Adapters allow future equipment to be attached to the rail reducing obsolescence.
- Future gas service expansion and additions will not need lengthy construction or gas recertification.

Flexible & Efficient

- Integrated equipment management rail system.
- Component based design to meet very specific user demands.
- Supported by hundreds of rail accessories and adapters.

Eliminate Life Cycle Costs

- Non-invasive expansion of medical gas station outlets as needed.
- With an initial investment in the Medical Gas Rail, you are free to spend resources on more pressing priorities in your hospital.



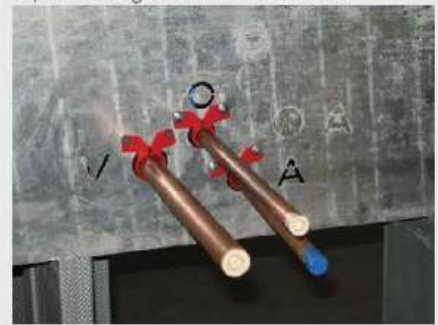
U.S. Patent - 7,857,354, 7,770,934



Medical Gas Rail



Conventional gas piping requires multiple connections as seen by blue tape leading to increased costs.



Medical Gas Rail piping requires only three connections.

Reduces Construction Costs

- The Nexxspan™ Medical Gas Rail reduces the cost of renovation and new construction.
- Shortens medical gas installation time.
- Eliminates up to 90% of medical gas pipe so overall project time can be drastically shortened.

Reduces Future Risk

- Nearly eliminates behind the wall gas pipes.

Reduce life cycle costs, shorten time of construction, and be prepared for future expansion all with one product that offers flexible equipment management — the components of the Nexxspan™ Medical Gas Rail System.

Reduces Maintenance Costs

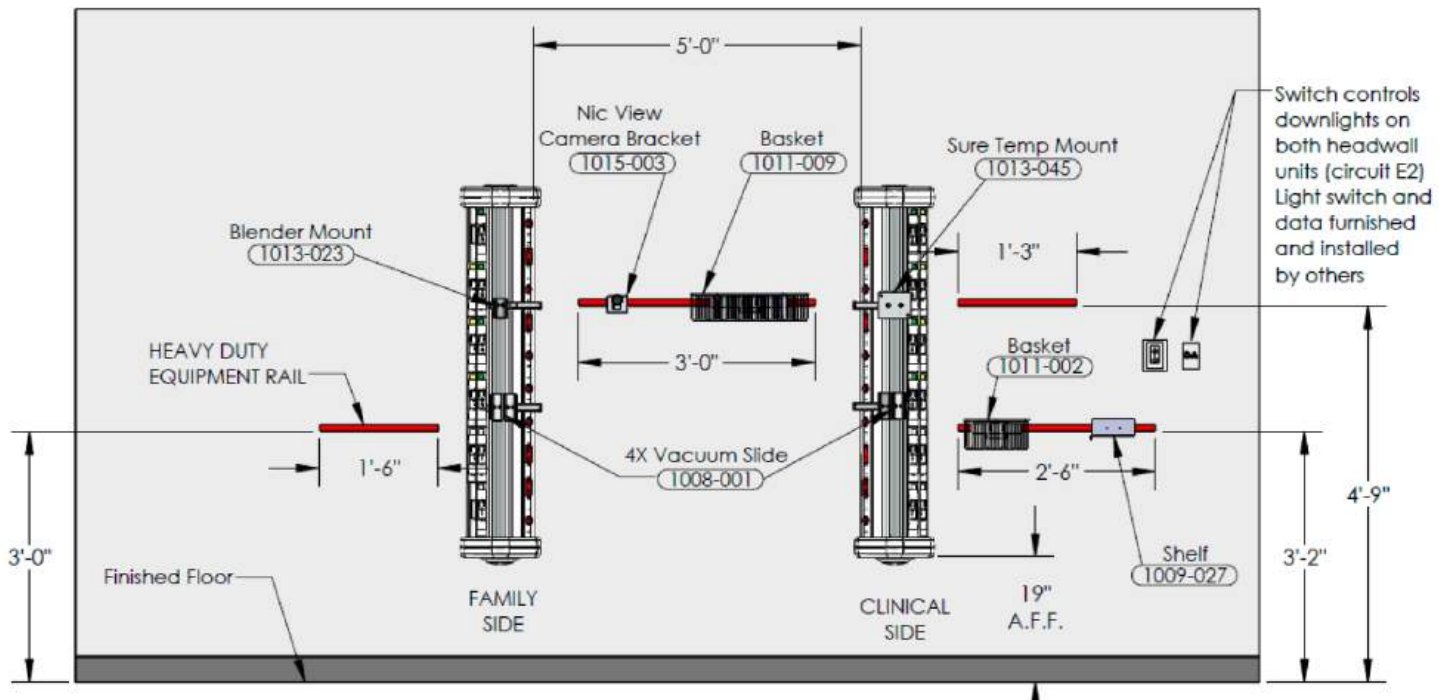
- Life cycle maintenance costs are reduced to a fraction of what conventional outlets cost to maintain.
- Single point connection for all services.
- Instant gas upgrade to meet room designation and C.O.N. changes.

Expandable

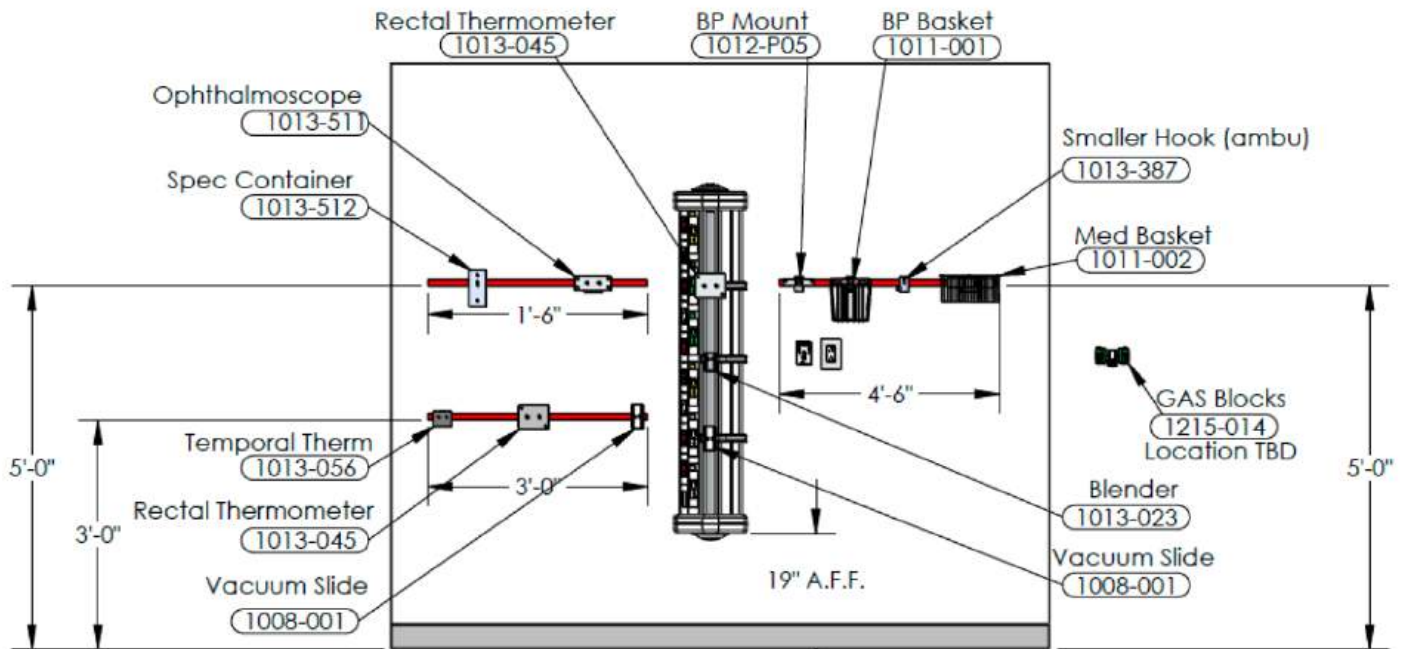
- The Nexxspan™ Medical Gas Rail provides safe and immediate expansion of medical gas delivery outlets.
- By mounting gas block accessories to the rail, multiplication/relocation is achieved with no added weight burden on the outlet itself.



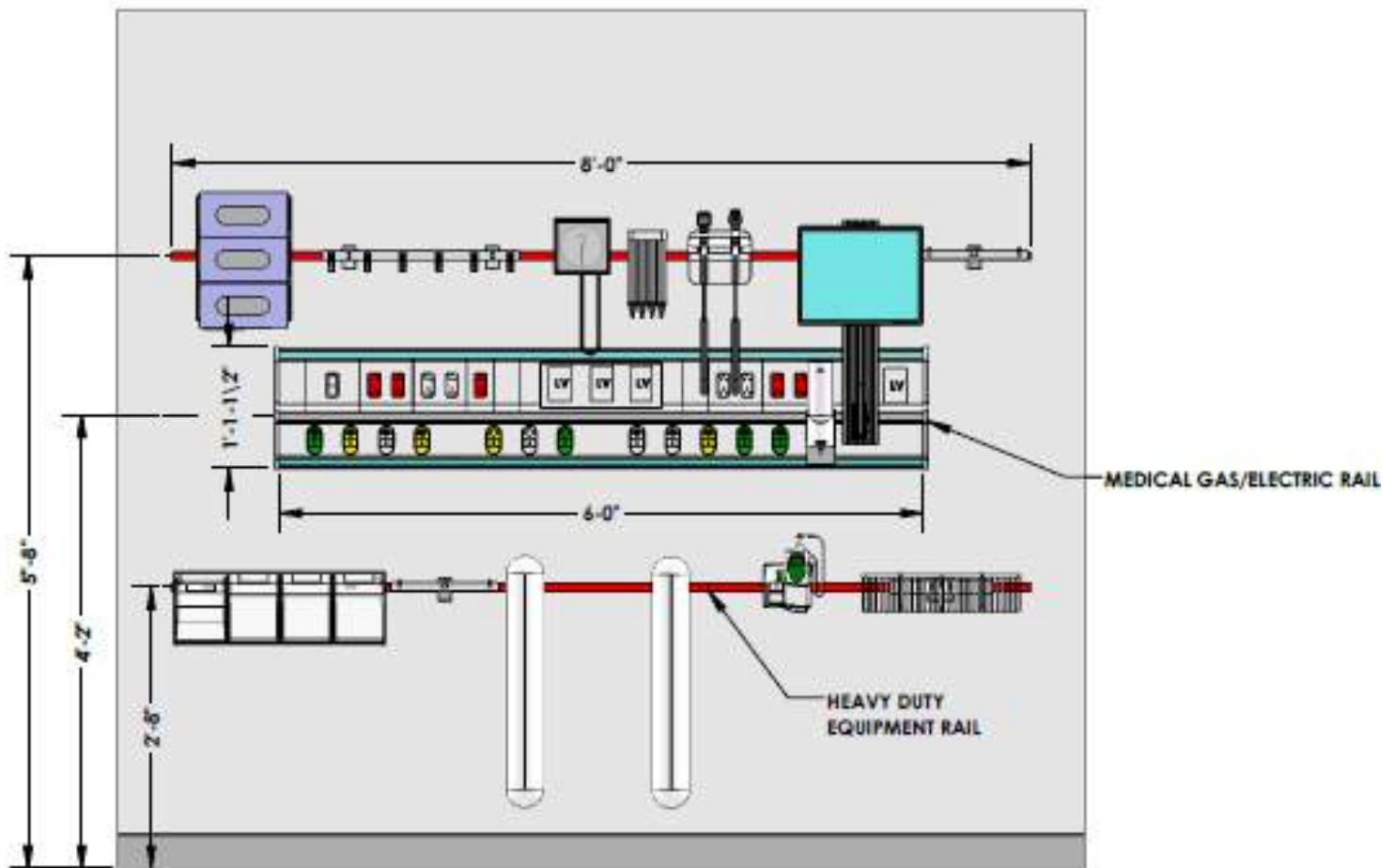
Sample Layouts – NICU



Sample Layouts - ED



Sample Layouts – ED Exam Room



Headwall Installs



Headwall Installs



Headwall Installs



Projects List

Cincinnati Children's Hospital

Cincinnati, OH

Matrixx-M Headwalls

Tuality Healthcare – Hillsboro Medical Center

Hillsboro, OR

Matrixx-M Headwalls

The Christ

Cincinnati, OH

Matrixx-M Headwalls

Memorial Hospital of South Bend

South Bend, IN

Matrixx-M Headwalls

Nationwide Children's Hospital on OSU

Columbus, OH

Matrixx-M Headwalls

Tampa General

Tampa, FL

Matrixx-M Headwalls

Parkland Hospital

Dallas, TX

Matrixx Headwalls

UC Medical Center

Cincinnati, OH

Equipments Rails

All Children's Hospital

St. Petersburg, FL

Medical Gas Rail, Matrixx Headwalls

Walt Disney's Children's Florida Hospital

Orlando, FL

Matrixx and Matrixx-M Headwalls

Advent Health

Orlando, FL

Equipment Rail



Projects List

VA New Orleans
New Orleans, LA
Medical Gas Rails

Reeves County Hospital District
Pecos, TX
Matrixx-M Headwalls

University of Tennessee Medical Center
Knoxville Tennessee
Matrixx Headwalls

Fairfax INOVA Hospital
Fairfax, VA
Matrixx Headwalls

Sibley Hospital
Washington, DC
Matrixx Headwalls

High Point University
High Point, NC
Medical Gas Rail

Flagler Hospital
St. Augustine, FL
Matrixx-M Headwalls

Maury Regional Hospital
Columbia, TN
Matrixx-M Headwalls

St. Mary's Hospital
St. Louis, MO
Matrixx-M Headwalls

Multicare Tacoma General Hospital
Tacoma, WA
Matrixx Headwalls

Boston Medical Center
Boston, MA
Matrixx Headwalls



Index

Item	Part Number	Page Number
3M		
3M Avagard Antiseptic Bracket Mounting Kit Model: 9200, 9216	1013-471	38
3M Avagard D Hand Antiseptic Mounting Kit	1013-055	38
3M Command Cord Bundler	1013-166	84
3M Razor Rail Mount Model 9662L	1013-410	95
Adapter Only		
Double Width Adapter, 2 Horizontal Holes Drilled and Countersunk	1001-012	20
Double Width Adapter, 2 Horizontal Holes Drilled and Tapped for M6 Screw	1001-013	20
Double Width Adapter, 2 Vertical Holes Drilled and Countersunk	1001-010	20
Double Width Adapter, 4 Holes Drilled and Countersunk	1001-011	20
Double Width Adapter, 4 Holes Drilled and Tapped 10/32"	1001-014	20
Single Width Adapter, 1 Hole Drilled and Countersunk	1001-005	19
Single Width Adapter, 1 Hole Drilled and Tapped 10/32"	1001-006	19
Single Width Adapter, 2 Horizontal Holes, Drilled and Countersunk	1001-002	19
Single Width Adapter, 2 Horizontal Holes, Drilled and Tapped 10/32"	1001-004	19
Single Width Adapter, 2 Vertical Holes, Drilled and Countersunk	1001-001	19
Single Width Adapter, 2 Vertical Holes, Drilled and Tapped 10/32"	1001-003	19
Single Width Adapter, Blank	1001-000	19
Air Gas Management		
Air Gas Block - 1 - 1.8" NPT Front, DISS Side	1125-011	128
Air Gas Block - 1 -1.8" NPT Front	1125-001	128
Air Gas Block - 1 Chemetron Quick Connect Front	1125-004	129
Air Gas Block - 1 Chemetron Quick Connect Front, DISS Side	1125-014	129
Air Gas Block - 1 DISS Front	1125-002	128
Air Gas Block - 1 DISS Front, DISS Side	1125-012	128
Air Gas Block - 1 Ohmeda Quick Connect Front	1125-003	129
Air Gas Block - 1 Ohmeda Quick Connect Front, DISS Side	1125-013	129
Air Gas Block - 1 Puritan Quick Connect Front	1125-005	129
Air Gas Block - 1 Puritan Quick Connect Front, DISS Side	1125-015	129
Air Gas Block - 2 - 1/8" NPT Front	1225-001	130
Air Gas Block - 2 - 1/8" NPT Front, 2 DISS Side, Top Feed	1225-111	130
Air Gas Block - 2 - 1/8" NPT Front, DISS Side	1225-011	130
Air Gas Block - 2 Chemetron Quick Connect Front	1225-004	131
Air Gas Block - 2 Chemetron Quick Connect Front, DISS Side	1225-014	131
Air Gas Block - 2 DISS Front	1225-002	130
Air Gas Block - 2 DISS Front, DISS Side	1225-012	130
Air Gas Block - 2 Ohmeda Quick Connect Front	1225-003	131
Air Gas Block - 2 Ohmeda Quick Connect Front, DISS Side	1225-013	131
Air Gas Block - 2 Puritan Quick Connect Front	1225-005	131
Air Gas Block - 2 Puritan Quick Connect Front, DISS Side	1225-015	131

Index

Item	Part Number	Page Number
Air Gas Management Cont.		
Air Splitter Block - Puritan Quick Connect to 2 DISS Outlets	1006-021	132
Air Splitter Block - Chemetron Quick Connect to 2 DISS Outlets	1006-008	132
Air Splitter Block - DISS to 2 DISS Outlets	1006-016	132
Air Splitter Block - Ohmeda Quick Connect to 2 DISS Outlets	1006-005	132
Air Hoses		
Air Hoses - 24" DISS Straight to DISS Handnut with 90° Fitting	1007-303	133
Air Hoses - 24" DISS to Chemetron Style Quick Connect with 90° Fitting	1007-011	133
Air Hoses - 24" DISS to DISS Handnut Straight	1007-003	133
Air Hoses - 24" DISS to Ohmeda Style Quick Connect with 90° Fitting	1007-010	133
Air Hoses - 24" DISS to Puritan Style Quick Connect with 90° Fitting	1007-012	133
Air Hoses - 36" DISS to Chemetron Style Quick Connect with 90° Fitting	1007-111	134
Air Hoses - 36" DISS to DISS Handnut Straight	1007-103	134
Air Hoses - 36" DISS to DISS Straight	1007-122	134
Air Hoses - 36" DISS to DISS with 90° Fitting	1007-118	134
Air Hoses - 36" DISS to Ohmeda Style Quick Connect with 90° Fitting	1007-110	134
Air Hoses - 36" DISS to Puritan Style Quick Connect with 90° Fitting	1007-112	134
Air Hoses - 48" DISS Straight to DISS Handnut with 90° Fitting	1007-323	135
Air Hoses - 48" DISS to Chemetron Style Quick Connect with 90° Fitting	1007-211	135
Air Hoses - 48" DISS to DISS Handnut Straight	1007-203	135
Air Hoses - 48" DISS to DISS with 90° Fitting	1007-218	135
Air Hoses - 48" DISS to Ohmeda Style Quick Connect with 90° Fitting	1007-210	135
Air Hoses - 48" DISS to Puritan Style Quick Connect with 90° Fitting	1007-212	135
Ambu 1" Hook	1013-387	83
Baskets		
Fixed Basket with 3 Dividers and Rail Mount	1011-003	79
Fixed Basket with Rail Mount	1011-002	79
Fixed Long Basket with Rail Mount	1011-009	79
Utility/BP Cuff Basket with Single Rail Mount	1011-001	79
BD		
BD Recykleen Cabinet Sharps Mount Model: 305096	1013-097	75
BD Sharps Wall Cabinet for 5.4 qt Mount Model: 305017	1013-099	75
BD Sharps Wall Collector Mounting Kit Model: 305447, 305426	1013-038	76
BD Sharps-A-Gator Rail Mount, Model: 31307005 and BD Patient Wall Mount 305420	1013-991	76
BD E-Z Scrub Brush Dispenser Holder - Model 107	1013-812	65
Bins		
3 Bin Tilt Out Storage Bin with Rail Mount	1011-100	80
4 Bin Tilt Out Storage Bin with Rail Mount	1011-101	80
5 Bin Tilt Out Storage Bin with Rail Mount	1011-102	80
6 Bin Tilt Out Storage Bin with Rail Mount	1011-103	80
Single Bin Tilt Out Storage with Rail Mount	1011-104	80
Bird Blender Mounting Kit	1013-023	118

Index

Item	Part Number	Page Number
Blood Pressure Cuff Basket Mounting Kit	1012-P04	22
Blood Pressure Sphygmomanometer Mounting Kit for Welch Allyn 509	1012-P02	23
Bobrick		
Bobrick Stainless Steel Multifold Dispenser Mounting Kit Model: 54720	1013-174	49
Bobrick Stainless Steel Multifold Towel Dispenser Model: B-2621	1013-221	49
Bowman		
Bowman Single Box Glove Holder for Horizontal Rail	1013-194	56
Bowman 3 Box Glove Holder - Horizontal - Mounting Kit Model: GP-015	1013-132H	56
Bowman 3 Box Glove Holder - Horizontal Mounting Model: GS-123	1013-117	56
Bowman 3 Box Glove Holder - Vertical Mounting Kit Model: GP-015	1013-132V	56
Bowman 3 Box Glove Holder - Vertical Mounting Model: GS-123	1013-116	56
Bowman 3 Box Glove Holder for Horizontal Rail Mounting Model: GW-055	1013-138	56
Bowman 4 Box Glove Holder for Horizontal Rail Mounting Model: GP-061	1013-137	56
Bowman Face Mask Dispenser Mounting Kit - Model FB-090	1013-147	62
Bowman PPE Dispensers Mounting Kit - Models: PS412-0212, PS016-0512	1013-989	66
Bradley		
Bradley Multifold Stainless Towel Dispenser Model: 251-15	1013-339	42
Bradley Roll Paper Towel Dispenser	1013-341	42
CareFusion Razor Holder Rail Mount	1013-404	95
Carts		
Cart Memo 2 - 2 Parallel Rails, 2 Swivel Rails, 1 Adapter Rail for Mounting C-Frame	1025-002	112
Cart: Memo 2 - Short with C-Frame	1025-001S	112
Cart: Memo 2 -3 Parallel Rails	1025-001	112
Cart: Memo 4 - Oxygen "H" Tanks with Integrated Equipment Management	1025-015	112
Catheter Holders		
Long Catheter Holder with Rail Mount	1013-006	81
Short Catheter Holder with Rail Mount	1013-005	81
Cavicide Caviwipes Canister Wall Bracket	1013-095	39
Channel Mounts		
GCX Adapter Plate (GCX by others) - 16" - 24" between Flush Mounted HDR Spanning a MGR	1010-016	101
GCX Adapter Plate (GCX by others) - 20" - 28" between Flush Mounted HDR Spanning a MGR	1010-017	101
GCX Adapter Plate by Others - 16" - 24" Span between Rail and MGR	1010-005	99
GCX Adapter Plate by Others - 16" - 24" Span Between Rail	1010-003	99
GCX Adapter Plate by Others - 20" - 28" Span Between Rail	1010-004	99
GCX Channel 0 7", 38mm Pole Mounting	1010-010	100
GCX Channel 25" Wall Mounting	1010-012	100
GCX Channel 31" Wall Mounting	1010-013	100
GCX Channel with Adapters - 16" - 24" between Flush Mounted HDR, Spanning a MGR	1010-018	101
GCX Channel with Adapters - 16" - 24" Span Between Rail	1010-001	99
GCX Channel with Adapters - 20" - 28" between Flush Mounted HDR, Spanning a MGR	1010-019	101
GCX Channel with Adapters - 20" - 28" Span Between Rail	1010-002	99
GCX Channel with Adapters - 16" x 24" Span between Rail and MGR	1010-006	100

Index

Item	Part Number	Page Number
Chart Holder with Rail Mount	1013-001	92
Clip Organizer		
3 Clip Organizer with Rail Mount	1013-033	85
3 Hook Holder with 9 Clips and Rail Mount	1013-114	85
4 Clip Organizer with Rail Mount	1013-030	85
6 Clip Organizer with Rail Mount	1013-029	85
Single Hook Holder with 3 Clips and Rail Mount	1013-113	85
Cord Management		
3M Command Cord Bundler	1013-166	84
Cord Wrap Holder with Rail Mount	1013-026	84
Resuscitator Holder with Rail Mount	1013-004	84
Reverse Cord Bundler 1.5" x 2"	1013-396	84
Counter Top		
Extended Counter Top - 32" Wide	1011-016	103
Standard Counter Top for C-frame	1011-017	103
Covidien Kendall		
Kendall (Covidien) Sharps Mount Model: 8836SA and SWM3100H	1013-098	74
Kendall Large Sharps Container Mounting Kit	1013-039	72
Kendall Standard Sharps Container Mounting Kit	1013-041	72
Standard Covidien/Kendall Sharps 5 quart Mount	1013-188	73
Standard Covidien/Kendall Wire Sharps Holder Mount Model: 8528C	1013-201	73
Cup Holder Only with Rail Mount	1013-422	95
Cup (Stainless Steel) with Holder and Rail Mount	1055-020	95
Daniels Sharpsmart		
Daniels Sharpsmart Mount S14/S22/S32 with mount 4005007000, LH4000300000 or RH4000400000	1013-040	69
Daniels Sharpsmart Mount for S14/S22/S32 with mount LH4008507000 or RH4008607000	1013-399	69
Dinamap NIBP Monitor Mounting Kit	1010-009	22
Drawer Frames & Drawers		
C-Frame - 22"x17"x10"	1011-015	104
C-Frame Mounting Adapter Rail Only for Heavy Duty Rail Mounting	1011-005A	104
C-Frame Side, Heavy Duty Rail Kit with Stand Offs	1011-004B	103
C-Frame Side, Light Duty Rail Kit with Stand Offs	1011-004	103
C-Frame with A and B Drawers, Extended Top, Mounting Kit to Equipment Rail	1011-007	104
C-Frame with A and B Drawers, Standard Top, Mounting Kit to Equipment Rail	1011-006	104
Drawer A - 3" High - Lockable	1011-021	105
Drawer A - 3" High - Non-lock	1011-018	105
Drawer A - 3" High - Touchpad Lock	1011-027	106
Drawer B - 6" High - Lockable	1011-022	105
Drawer B - 6" High - Non-lock	1011-019	105
Drawer B - 6" High - Touchpad Lock	1011-028	106
Drawer C - 9" High - Lockable	1011-023	105
Drawer C - 9" High - Non-lock	1011-020	105
Drawer C - 9" High - Touchpad Lock	1011-029	106

Index

Item	Part Number	Page Number
"E" Cylinder Bottle Holder with Rail Mount	1013-015	93
Eco Glove		
Eco Glove by Zing Green Products 3 Box Glove Holder - Horizontal Mount Model: ZING 7222	1013-177H	60
Eco Glove by Zing Green Products 3 Box Glove Holder - Vertical Model: ZING 7222	1013-177V	60
Ecolab		
Ecolab 15 oz Quick Care Sanitizer Foam	1013-094	34
Ecolab 7 oz Quick Care Sanitizer Foam	1013-093	34
Ecolab 9 oz and 15 oz Quick Care Foam with Drip Pan	1013-094A	34
Ecolab Aseptic Wipes	1013-090	33
Ecolab Bullseye Soap Dispenser Model: 92022111	1013-091	33
Ecolab Endure 750 ml Soap Dispenser Model: 92723188	1013-089	33
Ecolab Hand Hygiene Soap Dispenser	1013-092	33
Emesis-Bag Dispenser Wall Mount	1013-042	94
Exergen Temporal Thermometer Mounting Kit	1013-056	27
Face Mask Dispenser		
Bowman Face Mask Dispenser Mounting Kit - Model FB-090	1013-147	62
Halyard Surgical Mask Dispenser - Model 47500	1013-810	63
Halyard Surgical Mask Dispenser - Model 48100, 47625, 59928	1013-806	63
Halyard Surgical Mask Dispenser - Model 48147, 48247	1013-808	63
Halyard Surgical Mask Dispenser - Model 48220, 49235	1013-802	63
Precept Tape Fog Shield - Model 65-3322	1013-801	64
Universal Face Mask Dispenser Holder	1013-149	62
GCX		
GCX Adapter Plate (GCX by others) - 16" - 24" between Flush Mounted HDR Spanning a MGR	1010-016	101
GCX Adapter Plate (GCX by others) - 20" - 28" between Flush Mounted HDR Spanning a MGR	1010-017	101
GCX Adapter Plate by Others - 16" - 24" Span between Rail and MGR	1010-005	99
GCX Adapter Plate by Others - 16" - 24" Span Between Rail	1010-003	99
GCX Adapter Plate by Others - 20" - 28" Span Between Rail	1010-004	99
GCX Channel 0 7", 38mm Pole Mounting	1010-010	100
GCX Channel 25" Wall Mounting	1010-012	100
GCX Channel 31" Wall Mounting	1010-013	100
GCX Channel with Adapters - 16" - 24" between Flush Mounted HDR, Spanning a MGR	1010-018	101
GCX Channel with Adapters - 16" - 24" Span Between Rail	1010-001	99
GCX Channel with Adapters - 20" - 28" between Flush Mounted HDR, Spanning a MGR	1010-019	101
GCX Channel with Adapters - 20" - 28" Span Between Rail	1010-002	99
GCX Channel with Adapters - 16" x 24" Span between Rail and MGR	1010-006	100
Georgia Pacific		
Georgia Pacific Chrome Multifold Stainless Dispenser Mounting Kit Model: 54720	1013-173	45
Georgia Pacific Chrome/White Combination Multifold Mounting Kit Model: 56620, 56601	1013-170	44
Georgia Pacific enMotion Automated Touchless Mounting Kit Model: 59462	1013-076	43
Georgia Pacific enMotion Impulse 10 Automated Dispenser Mount Kit Models: 59488/59447/59487	1013-079	43
Georgia Pacific enMotion Impulse 8 Automated Dispenser Mounting Kit Model: 59498	1013-171	44

Index

Item	Part Number	Page Number
Georgia Pacific cont.		
Georgia Pacific enMotion Stainless, Recessed Automated Touchless Mounting Model: 59466	1013-172	45
Georgia Pacific EnMotion Touchless Soap/Sanitizer Dispenser Models: 52052, 52053, 52054	1013-071	37
Georgia Pacific Softpull Junior Capacity Centerpull Dispenser Mounting Kit Model: 58008	1013-191	46
Georgia Pacific Softpull Towel Dispenser Mounting Kit Model: 58470, 58487	1013-182	46
Georgia Pacific - Cormatic HDS200B, enMotion 59462 Paper Towel Dispenser	1013-211	41
Georgia Pacific - C-fold 56665 /01, enMotion Impulse 10 Paper Towel Dispenser	1013-210	41
Glove Dispenser		
Bowman 3 Box Glove Holder - Horizontal - Mounting Kit Model: GP-015	1013-132H	56
Bowman 3 Box Glove Holder - Horizontal Mounting Model: GS-123	1013-117	56
Bowman 3 Box Glove Holder - Vertical Mounting Kit Model: GP-015	1013-132V	56
Bowman 3 Box Glove Holder - Vertical Mounting Model: GS-123	1013-116	56
Bowman 3 Box Glove Holder for Horizontal Rail Mounting Model: GW-055	1013-138	56
Bowman 4 Box Glove Holder for Horizontal Rail Mounting Model: GP-061	1013-137	56
Bowman Single Box Glove Holder for Horizontal Rail	1013-194	56
Eco Glove by Zing Green Products 3 Box Glove Holder - Horizontal Mount Model: ZING 7222	1013-177H	60
Eco Glove by Zing Green Products 3 Box Glove Holder - Vertical Model: ZING 7222	1013-177V	60
Grainger 3 Box Glove Rack Horizontal Mounting Model: 6GKY3	1013-131	58
Grainger 3 Box Glove Rack Vertical Mounting Model: 6GKY3	1013-133	58
Grainger 4 Box Glove Holder Horizontal Mounting Model: 6GKY5	1013-119	58
Grainger 4 Box Glove Holder Vertical Mounting Model: 6GKY5	1013-118	58
Health Care Logistics 3 Glove Holder Horizontal Rail Mount Model: 17898	1013-884	57
Health Care Logistics Quad Glove Holder Horizontal Rail Mount Model: 11948	1013-395	57
Health Care Logistics Quad Glove Holder Vertical Rail Mount Model: 11948	1013-395V	57
Health Care Logistics Quad Steel Glove Holder Horizontal Rail Mount Model: 17899	1013-985	57
Health Care Logistics Quad Steel Glove Holder Horizontal Rail Mount Model: 17899	1013-985V	57
Health Care Logistics Three Glove Holder Horizontal Rail Mount Model: 7467-01	1013-343	57
Health Care Logistics Three Glove Holder Vertical Rail Mount Model: 7467-01	1013-343V	57
Market Lab 3 Box Glove Holder - Horizontal Mounting Model: ML3615	1013-187H	60
Market Lab 3 Box Glove Holder - Horizontal or Vertical Mounting Model: ML3615	1013-187V	60
Medline 2 Glove Box Holder Extended Length Model: MDS192096XL	1013-370	59
Medline 3 Box Glove Holder - Horizontal - Model: MDS193097B/GB-003	1013-145	59
Medline 3 Box Glove Holder - Vertical - Model: MDS193097B/GB-003	1013-146	59
Medline 3 Box Glove Holder Model: MDS193196B	1013-379	59
Nexxspan Single Glove Box Holder with Rail Mount	1013-002	54
Nexxspan Three Glove Box Holder with Rail Mount	1013-129	54
Nexxspan Two Glove Box Holder with Rail Mount	1013-003	54
Northern Acrylics - Plate Only for 4 Glove Box Holder	1013-215	55
Northern Acrylics 3 Box Glove Holder Horizontal Rail Mount Model: 1100-16875	1013-316B	55
Northern Acrylics 3 Box Glove Holder Vertical Rail Mount Model: 1100-16875	1013-315B	55
Northern Acrylics 4 Box Glove Holder Vertical Rail Mount Model: 1100-2500	1013-215B	55
Northern Acrylics 4 Box Glove Holder Vertical Rail Mount Model: 1100-2500	1013-216B	55
Omnimed 3 Box Glove Holder for Horizontal Rail Mount Kit Model: 305380	1013-130	61
Phipps & Bird Accente 3 Box Glove Holder Mount Kit Model: 10-GBTR-18	1013-115	61

Index

Item	Part Number	Page Number
Grainger		
Grainger 3 Box Glove Rack Horizontal Mounting Model: 6GKY3	1013-131	58
Grainger 3 Box Glove Rack Vertical Mounting Model: 6GKY3	1013-133	58
Grainger 4 Box Glove Holder Horizontal Mounting Model: 6GKY5	1013-119	58
Grainger 4 Box Glove Holder Vertical Mounting Model: 6GKY5	1013-118	58
Halyard		
Halyard Surgical Mask Dispenser - Model 47500	1013-810	63
Halyard Surgical Mask Dispenser - Model 48100, 47625, 59928	1013-806	63
Halyard Surgical Mask Dispenser - Model 48147, 48247	1013-808	63
Halyard Surgical Mask Dispenser - Model 48220, 49235	1013-802	63
Headwalls & Gas Rails		
Matrixx-M Vertical Headwall	1024-XXX-M	143
Medical Gas Rail Horizontal	1023-XXX	143
Health Care Logistics		
Health Care Logistics 3 Glove Holder Horizontal Rail Mount Model: 17898	1013-884	57
Health Care Logistics Quad Glove Holder Horizontal Rail Mount Model: 11948	1013-395	57
Health Care Logistics Quad Glove Holder Vertical Rail Mount Model: 11948	1013-395V	57
Health Care Logistics Quad Steel Glove Holder Horizontal Rail Mount Model: 17899	1013-985	57
Health Care Logistics Quad Steel Glove Holder Horizontal Rail Mount Model: 17899	1013-985V	57
Health Care Logistics Three Glove Holder Horizontal Rail Mount Model: 7467-01	1013-343	57
Health Care Logistics Three Glove Holder Vertical Rail Mount Model: 7467-01	1013-343V	57
Healthcare Logistics PPE Dispenser Mounting Kit - Model: 18309	1013-989	66
Hooks		
3 Utility Hook Holder with Rail Mount	1013-014	83
Ambu 1" Hook	1013-387	83
Large Square "U" Hook	1013-148	83
Single "J" Hook with Rail Mount	1013-121	83
Single Hook Holder with Rail Mount	1013-013	83
Utility Hook 2"	1013-403	83
Hose Holder		
3 Clip with Rail Mount	1013-007	92
6 Clip - with Rail Mount	1013-008	92
Huntington		
Huntington Hand Pump for Endure 1000 ml Model: 9722107 & Ecolab Disposacare	1013-102	37
Huntington Hand Pump for Endure 18 oz, Model: 61439813 & Ecolab Disposacare	1013-080	37
Infusion Pump Holder		
Dual Swivel Infusion Pump Holder, Single Rail Mount - 36" x 20" Pole	1014-002	108
Fixed Single Infusion Pump Holder, Dual Rail Mount, 36" x 20" Pole	1014-003	108
Fixed Single Infusion Pump Holder, Single Rail Mount - 25" x 15" Pole	1014-006	109
Fixed Single Infusion Pump Holder, Single Rail Mount - 30" x 20" Pole	1014-007	109
Fixed Single Infusion Pump Holder, Single Rail Mount, 16" x 10" Pole	1014-005	109
Fixed Single Infusoin Pump Holder, Dual Rail Mount, 48" x 20" Pole	1014-004	108
Infusion Pump Mount Holder - 1" Diameter x 6" High for Rail Mounting	1014-P11	109

Index

Item	Part Number	Page Number
Infusion Pump Holder cont.		
Post Holder - 1" Diameter x 4" High	1013-024	108
Single Holder - 1" IV Pole Holder, Rail Mount with Snap Action Adapter for Rail Mounting	1014-P07	110
Single Infusion Pump Holder, Single Rail Mount - 36" x 20" Pole	1014-001	108
Single Pole Holder - 36" Long with 20" IV Pole	1014-P06	110
Infusion Pump Swing Arm		
IV Swing Arm - 12" x 20", 1.5" Pole Mount	1014-011	110
IV Swing Arm - 12" x 20", 1.5" Pole Mount, Arm Only	1014-008	110
IV Swing Arm - 12" x 20", GCX Mounting	1014-012	110
Single Articulation IV Swing Arm - 12" for 1-1/2" Pole Mount	1014-010	110
IPAD/Tablet Holder	1013-345	96
Kendall		
Kendall (Covidien) Sharps Mount Model: 8836SA and SWM3100H	1013-098	74
Kendall Large Sharps Container Mounting Kit	1013-039	72
Kendall Standard Sharps Container Mounting Kit	1013-041	72
Standard Covidien/Kendall Sharps 5 quart Mount	1013-188	73
Standard Covidien/Kendall Wire Sharps Holder Mount Model: 8528C	1013-201	73
Kimberly Clark		
Kimberly Clark Insight Compact Scottfold Mounting Model: 09215, 09216, 09217, 09214	1013-196	47
Kimberly Clark In-Sight Sanitouch Hard Roll Dispenser Mounting Kit Model: 09995, 09996	1013-082	48
Kimberly Clark Scottfold Dispenser Mounting Kit Model: 09903, 09904	1013-081	47
Kimberly Clark Universal Windows Series Dispenser Mounting Kit Model: 9905, 9906	1013-085	48
Kleenex Tissue Box Dispenser Holder	1013-815	65
Luxo Lamp Holder	1015-001	97
Magnahelic Gauge Mounting Kit	1013-018	28
Manometer		
Manometer Aneroid Mounting Kit for Welch Allyn 767	1012-P05	23
Manometer Aneroid Mounting Kit for Welch Allyn 777	1012-P55	24
Manometer Universal Mounting Kit	1013-016	28
Market Lab		
Market Lab 3 Box Glove Holder - Horizontal Mounting Model: ML3615	1013-187H	60
Market Lab 3 Box Glove Holder - Horizontal or Vertical Mounting Model: ML3615	1013-187V	60
Market Lab Mount Kit Model: 10031-850	1013-981	67
Medichoice Sponge Counter Bag Dispenser Mounting Kit	1055-010	64
Medline		
Medline 2 Glove Box Holder Extended Length Model: MDS192096XL	1013-370	59
Medline 3 Box Glove Holder - Horizontal - Model: MDS193097B/GB-003	1013-145	59
Medline 3 Box Glove Holder - Vertical - Model: MDS193097B/GB-003	1013-146	59
Medline 3 Box Glove Holder Model: MDS193196B	1013-379	59
Medline 8 ounce Epi-Clenz Mounting Kit Model: MSC097040	1013-060	36
Medline Push Dispenser Mounting Kit Model: LX10PUSH, MSC097062	1013-059	36
Medline Scrub Brush Box Holder Model: DYNDBRKT	1013-371	94
Neopuff Rail Mounting Kit	1013-036	118

Index

Item	Part Number	Page Number
Northern Acrylics		
Northern Acrylics - Plate Only for 4 Glove Box Holder	1013-215	55
Northern Acrylics 3 Box Glove Holder Horizontal Rail Mount Model: 1100-16875	1013-316B	55
Northern Acrylics 3 Box Glove Holder Vertical Rail Mount Model: 1100-16875	1013-315B	55
Northern Acrylics 4 Box Glove Holder Vertical Rail Mount Model: 1100-2500	1013-215B	55
Northern Acrylics 4 Box Glove Holder Vertical Rail Mount Model: 1100-2500	1013-216B	55
Omnimed 3 Box Glove Holder for Horizontal Rail Mount Kit Model: 305380	1013-130	61
Ophthalmoscope Holder Mounting Kit for Welch Allyn 747	1013-010	27
Ophthalmoscope Holder Mounting Kit for Welch Allyn 767	1013-011	26
Ophthalmoscope Holder Mounting Kit for Welch Allyn 777	1013-511	26
Oxygen Gas Management		
Oxygen Gas Block - 1 - 1.8" NPT Front, DISS Side	1105-011	120
Oxygen Gas Block - 1 - 1.8" NPT Front	1105-001	120
Oxygen Gas Block - 1 Chemetron Quick Connect Front	1105-004	121
Oxygen Gas Block - 1 Chemetron Quick Connect Front, DISS Side	1105-014	121
Oxygen Gas Block - 1 DISS Front	1105-002	120
Oxygen Gas Block - 1 DISS Front, DISS Side	1105-012	120
Oxygen Gas Block - 1 Ohmeda Quick Connect Front	1105-003	120
Oxygen Gas Block - 1 Ohmeda Quick Connect Front, DISS Side	1105-013	120
Oxygen Gas Block - 1 Puritan Quick Connect Front	1105-005	121
Oxygen Gas Block - 1 Puritan Quick Connect Front, DISS Side	1105-015	121
Oxygen Gas Block - 2 - 1/8" NPT Front	1205-001	122
Oxygen Gas Block - 2 - 1/8" NPT Front, 2 DISS Side, Top Feed	1205-111	122
Oxygen Gas Block - 2 - 1/8" NPT Front, DISS Side	1205-011	122
Oxygen Gas Block - 2 Chemetron Quick Connect Front	1205-004	123
Oxygen Gas Block - 2 Chemetron Quick Connect Front, DISS Side	1205-014	123
Oxygen Gas Block - 2 DISS Front	1205-002	122
Oxygen Gas Block - 2 DISS Front, DISS Side	1205-012	122
Oxygen Gas Block - 2 Ohmeda Quick Connect Front	1205-003	123
Oxygen Gas Block - 2 Ohmeda Quick Connect Front, DISS Side	1205-013	123
Oxygen Gas Block - 2 Puritan Quick Connect Front	1205-005	123
Oxygen Gas Block - 2 Puritan Quick Connect Front, DISS Side	1205-015	123
Oxygen Splitter Block - Chemetron Quick Connect to 2 DISS Outlets	1006-009	124
Oxygen Splitter Block - DISS to 2 DISS Outlets	1006-017	124
Oxygen Splitter Block - Ohmeda Quick Connect to 2 DISS Outlets	1006-007	124
Oxygen Splitter Block - Puritan Quick Connect to 2 DISS Outlets	1006-019	124
Oxygen Hoses		
Oxygen Hoses - 24" DISS Straight to DISS Handnut with 90° Fitting	1007-301	125
Oxygen Hoses - 24" DISS to Chemetron Style Quick Connect with 90° Fitting	1007-005	125
Oxygen Hoses - 24" DISS to DISS Handnut Straight	1007-001	125
Oxygen Hoses - 24" DISS to Ohmeda Style Quick Connect with 90° Fitting	1007-004	125
Oxygen Hoses - 24" DISS to Puritan Style Quick Connect with 90° Fitting	1007-006	125

Index

Item	Part Number	Page Number
Oxygen Gas Management Cont.		
Oxygen Hoses - 36" DISS Straight to DISS Handnut with 90° Fitting	1007-311	126
Oxygen Hoses - 36" DISS to Chemetron Style Quick Connect with 90° Fitting	1007-105	126
Oxygen Hoses - 36" DISS to DISS Handnut Straight	1007-101	126
Oxygen Hoses - 36" DISS to DISS Straight	1007-121	126
Oxygen Hoses		
Oxygen Hoses - 36" DISS to DISS with 90° Fitting	1007-120	126
Oxygen Hoses - 36" DISS to Ohmeda Style Quick Connect with 90° Fitting	1007-104	126
Oxygen Hoses - 36" DISS to Puritan Style Quick Connect with 90° Fitting	1007-106	126
Oxygen Hoses - 48" DISS Straight to DISS Handnut with 90° Fitting	1007-321	127
Oxygen Hoses - 48" DISS to Chemetron Style Quick Connect with 90° Fitting	1007-205	127
Oxygen Hoses - 48" DISS to DISS Handnut Straight	1007-201	127
Oxygen Hoses - 48" DISS to DISS with 90° Fitting	1007-220	127
Oxygen Hoses - 48" DISS to Ohmeda Style Quick Connect with 90° Fitting	1007-204	127
Oxygen Hoses - 48" DISS to Puritan Style Quick Connect with 90° Fitting	1007-206	127
Paper Towel Dispensers		
Bobrick Stainless Steel Multifold Dispenser Mounting Kit Model: 54720	1013-174	49
Bobrick Stainless Steel Multifold Towel Dispenser Model: B-2621	1013-221	49
Bradley Multifold Stainless Towel Dispenser Model: 251-15	1013-339	42
Bradley Roll Paper Towel Dispenser	1013-341	42
Georgia Pacific Chrome Multifold Stainless Dispenser Mounting Kit Model: 54720	1013-173	45
Georgia Pacific Chrome/White Combination Multifold Mounting Kit Model: 56620, 56601	1013-170	44
Georgia Pacific enMotion Automated Touchless Mounting Kit Model: 59462	1013-076	43
Georgia Pacific enMotion Impulse 10 Automated Dispenser Mounting Kit Model: 59488, 59447, 59487	1013-079	43
Georgia Pacific enMotion Impulse 8 Automated Dispenser Mounting Kit Model: 59498	1013-171	44
Georgia Pacific enMotion Stainless, Recessed Automated Touchless Mounting Model: 59466	1013-172	45
Georgia Pacific Softpull Junior Capacity Centerpull Dispenser Mounting Kit Model: 58008	1013-191	46
Georgia Pacific Softpull Towel Dispenser Mounting Kit Model: 58470, 58487	1013-182	46
Kimberly Clark Insight Compact Scottfold Mounting Model: 09215, 09216, 09217, 09214	1013-196	47
Kimberly Clark In-Sight Sanitouch Hard Roll Dispenser Mounting Kit Model: 09995, 09996	1013-082	48
Kimberly Clark Scottfold Dispenser Mounting Kit Model: 09903, 09904	1013-081	47
Kimberly Clark Universal Windows Series Dispenser Mounting Kit Model: 9905, 9906	1013-085	48
Universal Bracket - Large 10" x 12" - for 3 Gallon Paper Towel, Sharps Dispensers	1013-211	41
Universal Bracket - Medium 8" x 10" - for Paper Towel Dispensers	1013-210	41
Patient Phone Holder - MEDPAT	1013-445	96
PDI		
PDI San Bracket Wipes Box Rail Mount Model P44210	1013-183	40
PDI Sani Cloth, Metal Holder Mounting Kit Model: Q51510	1013-050	40
Phipps & Bird Accente 3 Box Glove Holder Mount Kit Model: 10-GBTR-18	1013-115	61
Pillow Speaker/Nurse Call Holder	1013-344	96
PPE Dispensers		
Market Lab Mount Kit Model: 10031-850	1013-981	67
Mount Kit for Various PPE Dispensers - Bowman PS412-0212/PS016-0512, Healthcare Logistics 18309	1013-989	66
Pole Mount - Universal	1013-022	93

Index

Item	Part Number	Page Number
Pole Mount for Light Duty Rail	1013-019	93
Power Strip - Rail Mounted	500-001	94
Precept Tape Fog Shield - Model 65-3322	1013-801	64
Rail		
1 Foot Heavy Duty Rail	1002-012	7
2 Foot Heavy Duty Rail	1002-024	7
3 Foot Heavy Duty Rail	1002-036	7
4 Foot Heavy Duty Rail	1002-048	7
5 Foot Heavy Duty Rail	1002-060	7
6 Foot Heavy Duty Rail	1002-072	7
7 Foot Heavy Duty Rail	1002-084	7
8 Foot Heavy Duty Rail	1002-096	7
9 Foot Heavy Duty Rail	1002-108	7
10 Foot Heavy Duty Rail	1002-120	7
Joiner	1002-P02	7
End Cap, Hard Plastic	1002-P01	7
Inlay 1' - Variety of Colors	1002-P04	7
Rail Mounting Hardware		
Drywall Hardware, Flush Mount for Heavy and Light Duty Rail	1004-P02	8
Drywall Hardware, Stand-off for Heavy Duty Rail	1004-P05	9
Drywall Hardware, Stand-off for Light Duty Rail	1004-P08	9
Masonry Hardware, Flush Mount for Heavy and Light Duty Rail	1004-P03	8
Masonry Hardware, Stand-off for Heavy Duty Rail	1004-P06	9
Masonry Hardware, Stand-off for Light Duty Rail	1004-P09	9
Metal Studs and Backer Hardware, Flush Mount, Heavy and Light Duty Rail	1004-P01	8
Metal Studs or Backer Hardware, Stand-off for Heavy Duty Rail	1004-P04	9
Metal Studs or Backer Hardware, Stand-off for Light Duty Rail	1004-P07	9
Pedestal for Mounting Equipment Rail	1004-P14	8
Respiratory Circuit Flex Arm Mount	1013-028	97
RX Destroyer Drug Disposal Gallon Holder Rail Mount Model: RX1_OWAllSec	1013-470	94
Scrub Brush Dispenser Holder - BD EZModel 107	1013-812	65
Scrub Brush Box Holder - Medline DYNDBRKT	1013-371	96
Sharps		
BD Recykleen Cabinet Sharps Mount Model: 305096	1013-097	75
BD Sharps Wall Cabinet for 5.4 qt Mount Model: 305017	1013-099	75
BD Sharps Wall Collector Mounting Kit Model: 305447, 305426	1013-038	76
BD Sharps-A-Gator Rail Mount, Model: 31307005 and BD Patient Wall Mount 305420	1013-991	76
Daniels Sharpsmart Kit for S14/S22/S32 with mount 4005007000, LH4000300000 or RH4000400000	1013-040	69
Daniels Sharpsmart Mount for S14/S22/S32 with mount LH4008507000 or RH4008607000	1013-399	69
Kendall (Covidien) Sharps Mount Model: 8836SA and SWM3100H	1013-098	74
Kendall Large Sharps Container Mounting Kit	1013-039	72
Kendall Standard Sharps Container Mounting Kit	1013-041	72
Sharps Universal Style Sharps Container Mounting Kit	1013-009	77
Sharps-A-Gator Hidden Bracket Models: 31158960, 4838,4822, 4823, 4835, 4833, 4836	1013-047	74
Standard Covidien/Kendall Sharps 5 quart Mount	1013-188	73

Index

Item	Part Number	Page Number
Sharps cont.		
Standard Covidien/Kendall Wire Sharps Holder Mount Model: 8528C	1013-201	73
Stericycle 2 Gallon Sharps, Lockable Cabinet Mounting Kit Model: OC-02-2004	1013-046	70
Stericycle Sharps Locking Wall Mount Model: 0203WMA	1013-103	71
Stericycle Wall Bracket for CSRX Container Model: BKT2	1013-987	70
Universal Mounting Plate Stericycle Sharps Rail Mount	1013-352	71
Sharps-A-Gator Hidden Bracket Mount Model: 31158960, 4838,4822, 4823, 4835, 4833, 4836	1013-047	74
Shelves - Angled		
13"W x 8"D Angled Shelf with Rail Mount	1009-006	88
13"W x 8"D Angled Shelf with Strap with Rail Mount	1009-015	88
8"W x 8"D Angled Shelf with Rail Mount	1009-005	88
8"W x 8"D Angled Shelf with Strap with Rail Mount	1009-014	88
Shelves - Flat		
10"W x 13"D Flat Shelf with Rail Mount	1009-002	87
10"W x 8"D Flat Shelf with Rail Mount	1009-001	87
13"W x 13"D Flat Shelf with Rail Mount	1009-003	87
19"W x 13"D Flat Shelf with Rail Mount	1009-004	87
Shelves - Foldable Hinged		
13 1/2"W x 10"D Foldable Hinged Shelf with Rail Mount	1009-008	89
17" x 12" Foldable Hinged Shelf with Rail Mount	1009-009	89
9"W x 12"D Foldable, Hinged Shelf with Rail Mount	1009-007	89
Shelves - WORXX		
10" x 15" WORXX Station Fold Up Shelf with Pole Mount	1009-101	90
10" x 15" WORXX Station Fold Up Shelf with Rail Mount	1009-100	90
Soap & Sanitizer Mounts		
3M Avagard Antiseptic Bracket Mounting Kit Model: 9200, 9216	1013-471	38
3M Avagard D Hand Antiseptic Mounting Kit	1013-055	38
Ecolab 15 oz Quick Care Sanitizer Foam	1013-094	34
Ecolab 7 oz Quick Care Sanitizer Foam	1013-093	34
Ecolab 9 oz and 15 oz Quick Care Foam with Drip Pan	1013-094A	34
Ecolab Aseptic Wipes	1013-090	33
Ecolab Bullseye Soap Dispenser Model: 92022111	1013-091	33
Ecolab Endure 750 ml Soap Dispenser Model: 92723188	1013-089	33
Ecolab Hand Hygiene Soap Dispenser	1013-092	33
Georgia Pacific EnMotion Touchless Soap/Sanitizer Dispenser Models: 52052, 52053, 52054	1013-071	37
Huntington Hand Pump for Endure 1000 ml Model: 9722107 & Ecolab Disposacare	1013-102	37
Huntington Hand Pump for Endure 18 oz, Model: 61439813 & Ecolab Disposacare	1013-080	37
Medline 8 ounce Epi-Clenz Mounting Kit Model: MSC097040	1013-060	36
Medline Push Dispenser Mounting Kit Model: LX10PUSH, MSC097062	1013-059	36
Steris 9 ounce All Care Mounting Kit Model: 6399-36	1018-S03	35
Steris Multi Use Hand Pump Dispenser Mounting Kit Model: 1307-Q5	1018-S04	35
Universal Soap, Lotion and Sanitizer	1013-209	32
Speculum Container Mounting Kit for Welch Allyn 777	1013-512	25
Speculum Container Mounting Kit for Welch Allyn	1013-012	25
Sponge Counter Bag Dispenser by Medichoice Mounting Kit	1055-010	64

Index

Item	Part Number	Page Number
Stericycle		
Stericycle 2 Gallon Sharps, Lockable Cabinet Mounting Kit Model: OC-02-2004	1013-046	70
Stericycle Sharps Locking Wall Mount Model: 0203WMA	1013-103	71
Stericycle Wall Bracket for CSRX Container Model: BKT2	1013-987	70
Universal Mounting Plate Stericycle Sharps Rail Mount	1013-352	71
Steris		
Steris 9 ounce All Care Mounting Kit Model: 6399-36	1018-S03	35
Steris Multi Use Hand Pump Dispenser Mounting Kit Model: 1307-Q5	1018-S04	35
Telephone Rail Mount	1013-027	94
Thermometer Welch Allyn Sure Temp Oral and Rectal	1013-045	24
Thermometer Mounting Kit for Exergen Temporal	1013-056	27
Transducer Holder Pole Mount	1013-025	97
Vacuum Gas Block		
Vacuum Gas Block - 1 -1.8" NPT Front	1115-001	136
Vacuum Gas Block - 1 Chemetron Quick Connect Front	1115-004	136
Vacuum Gas Block - 1 DISS Front	1115-002	136
Vacuum Gas Block - 1 Ohmeda Quick Connect Front	1115-003	136
Vacuum Gas Block - 1 Puritan Quick Connect Front	1115-005	136
Vacuum Gas Block - 2 - 1/8" NPT Front	1215-001	137
Vacuum Gas Block - 2 Chemetron Quick Connect Front	1215-004	137
Vacuum Gas Block - 2 DISS Front	1215-002	137
Vacuum Gas Block - 2 Ohmeda Quick Connect Front	1215-003	137
Vacuum Gas Block - 2 Puritan Quick Connect Front	1215-005	137
Ventilator Manifold - with 2 Air & 2 Oxygen Chemetron Quick-Connectors w/ Blender Bracket	1006-003	119
Ventilator Manifold - with 2 Air & 2 Oxygen Ohmeda Quick-Connectors w/ Blender Bracket	1006-004	119
Ventilator Manifold - Air/Oxygen, 2 Air DISS and 2 Oxygen DISS with Blender Bracket	1006-001	119
Ventilator Manifold - Air/Oxygen, 3 Air DISS and 3 Oxygen DISS with Blender Bracket	1006-002	119
Vacuum Splitter Block - Puritan Quick Connect to 2 DISS Outlets	1006-020	138
Vacuum Splitter Block - Chemetron Quick Connect to 2 DISS Outlets	1006-012	138
Vacuum Splitter Block - DISS to 2 DISS Outlets	1006-018	138
Vacuum Splitter Block - Ohmeda Quick Connect to 2 DISS Outlets	1006-011	138
Vacuum Bottle with Slide Mount	1008-001	92
Vacuum Hoses		
Vacuum Hoses - 24" DISS Straight to DISS Handnut with 90° Fitting	1007-302	139
Vacuum Hoses - 24" DISS to Chemetron Style Quick Connect with 90° Fitting	1007-008	139
Vacuum Hoses - 24" DISS to DISS Handnut Straight	1007-002	139
Vacuum Hoses - 24" DISS to Ohmeda Style Quick Connect with 90° Fitting	1007-007	139
Vacuum Hoses - 24" DISS to Puritan Style Quick Connect with 90° Fitting	1007-009	139
Vacuum Hoses - 36" DISS Straight to DISS Handnut with 90° Fitting	1007-312	140
Vacuum Hoses - 36" DISS to Chemetron Style Quick Connect with 90° Fitting	1007-108	140
Vacuum Hoses - 36" DISS to DISS Handnut Straight	1007-102	140
Vacuum Hoses - 36" DISS to DISS Straight	1007-123	140
Vacuum Hoses - 36" DISS to DISS with 90° Fitting	1007-119	140

Index

Item	Part Number	Page Number
Vacuum Hoses Cont.		
Vacuum Hoses - 36" DISS to Ohmeda Style Quick Connect with 90° Fitting	1007-107	140
Vacuum Hoses - 36" DISS to Puritan Style Quick Connect with 90° Fitting	1007-109	140
Vacuum Hoses - 48" DISS Straight to DISS Handnut with 90° Fitting	1007-322	141
Vacuum Hoses - 48" DISS to Chemetron Style Quick Connect with 90° Fitting	1007-208	141
Vacuum Hoses - 48" DISS to DISS Handnut Straight	1007-202	141
Vacuum Hoses - 48" DISS to DISS with 90° Fitting	1007-219	141
Vacuum Hoses - 48" DISS to Ohmeda Style Quick Connect with 90° Fitting	1007-207	141
Vacuum Hoses - 48" DISS to Puritan Style Quick Connect with 90° Fitting	1007-209	141
Vacuum Hoses - 36" DISS to Ohmeda Style Quick Connect with 90° Fitting	1007-107	140
Vacuum Hoses - 36" DISS to Puritan Style Quick Connect with 90° Fitting	1007-109	140
Waldman Euro Style Lamp Holder	1015-003	97
Waste Basket and Universal Mount	1013-020	93
Waste Basket Mount	1013-021	93
Welch Allyn		
Welch Allyn 509 Blood Pressure Sphygmomanometer Mounting Kit	1012-P02	23
Welch Allyn 747 Ophthalmoscope Holder Mounting Kit	1013-010	27
Welch Allyn 767 Aneroid Manometer Mounting Kit	1012-P05	23
Welch Allyn 767 Ophthalmoscope Holder Mounting Kit	1013-011	26
Welch Allyn 777 Aneroid Manometer Mounting Kit	1012-P55	24
Welch Allyn 777 Ophthalmoscope Holder Mounting Kit	1013-511	26
Welch Allyn 777 Speculum Container Mounting Kit	1013-512	25
Welch Allyn Speculum Container Mounting Kit	1013-012	25
Welch Allyn Sure Temp Oral and Rectal Thermometer	1013-045	24
Wipes Holder		
Cavicide Caviwipes Canister Wall Bracket	1013-095	39
PDI San Bracket Wipes Box Rail Mount Model P44210	1013-183	40
PDI Sani Cloth, Metal Holder Mounting Kit Model: Q51510	1013-050	40
Universal Wipes Holder Rail Mount	1013-111	39